

# HOW TO.

## Configuration of AXIS Parking Violation Detection on AXIS Camera Station

# Contents

<b>Introduction</b>	<b>3</b>
<b>Step 1 –Installation and Configuration</b>	<b>4</b>
<b>Step 2 - Add the camera to AXIS Camera Station</b>	<b>4</b>
<b>Step 3 – Configure a Device Event trigger</b>	<b>4</b>
<b>Step 4 – Configure the actions – Raise alarm and Record Alarm</b>	<b>6</b>
<b>Step 5 – Configuration validation</b>	<b>9</b>

## Introduction

AXIS Parking Violation Detection is designed to automatically detect vehicles parked in illegal or forbidden areas without relying on human judgement. It's ideal for surveillance in cities, at airports or private parking facilities – anywhere you need fast and precise, round-the-clock video-monitoring.

The following document highlights how to integrate AXIS Parking Violation Detection application with AXIS Camera Station's event system.

This guide assumes that AXIS Parking Violation Detection app has been installed and configured.

The document explains how to:

- Configure an AXIS Camera Station rule to trigger an event.
- Verify that the configuration is done correctly.

This following configuration has been tested with the following products and firmware:

### Prerequisites

AXIS Parking Violation Detection V1.0.1

AXIS Camera Station 5.27.195

AXIS P1445-LE firmware LTS 8.40.2

Please note that Axis doesn't take any responsibility for how this configuration may affect your system. If the modification fails or if you get other unexpected results, you may have to restore the settings to default.

## Step 1 – Installation and Configuration

Install the AXIS Parking Violation Detection and license key into the AXIS Camera or encoder. Configure the AXIS Parking Violation Detection app. For help with the installation and configuration of the AXIS Parking Violation Detection app, please refer to the [AXIS online manual](#).

Make sure APVD app is started.

## Step 2 - Add the camera to AXIS Camera Station

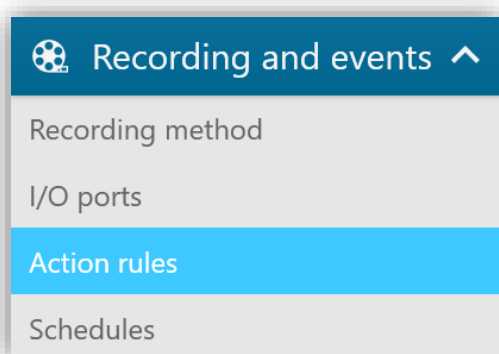
Add the camera to AXIS Camera Station. (For details please refer to [AXIS online manual](#))

When the camera is added to AXIS Camera Station, some ACAPs may be installed and run automatically inside the camera (for ex: AXIS Video Motion Detection ACAP, AXIS Video Content Stream ACAP, etc.). In this case please go to camera's web interface/Setup/Applications and remove all these ACAPs.

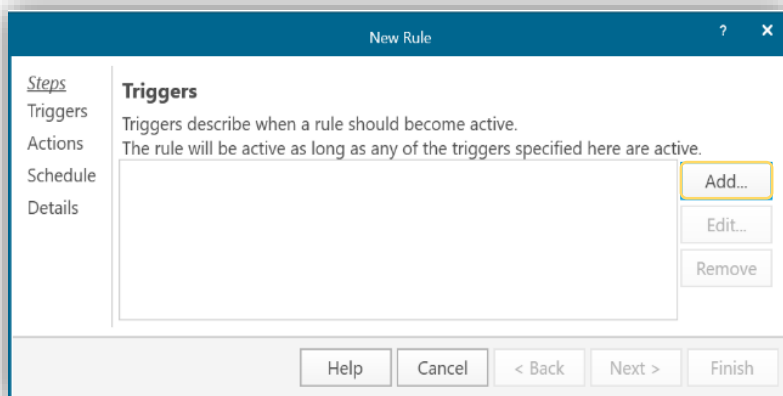
**NOTE** This means motion detection won't be available on the camera in AXIS Camera Station. Also the option "Include analytics data for Smart Search" in "Edit Video & Audio Settings" under advanced section shouldn't be enabled (disabled by default) for the camera.

## Step 3 – Configure a Device Event trigger

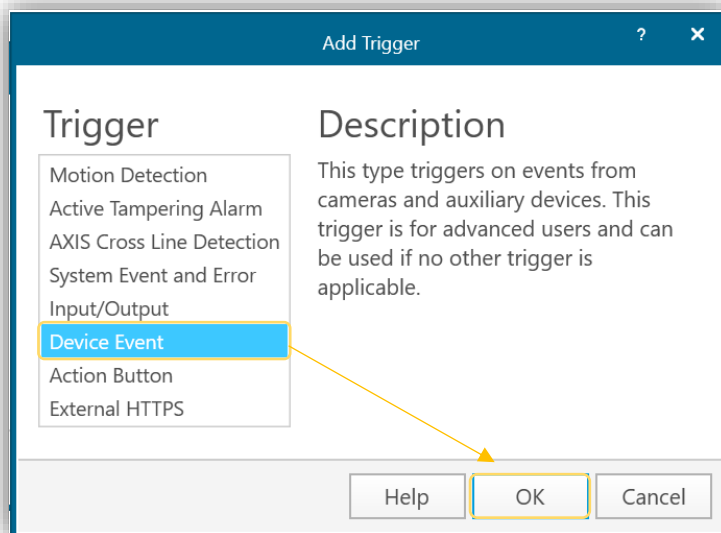
- Go to Configuration > Recording & Events and select Action rules.



- Select “New” and click “Add” to create a new rule.



- Select “Device Event” and click OK.



- Create device event trigger:

- Select the camera in the Device list.
- Select “Parking Violation” app in the Event list.
- Select the Trigger period (in seconds).

This function allows you to set an interval time between two successive triggers. It is used to reduce the number of successive recordings or triggers. The recording will continue if an additional trigger occurs within this interval.

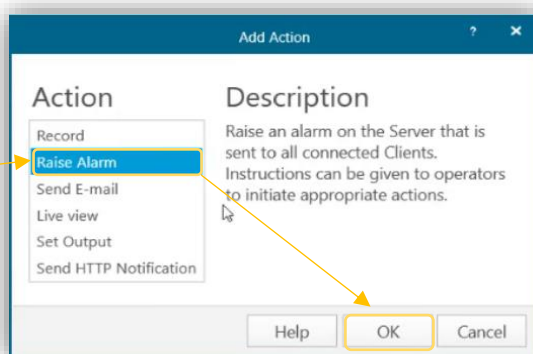
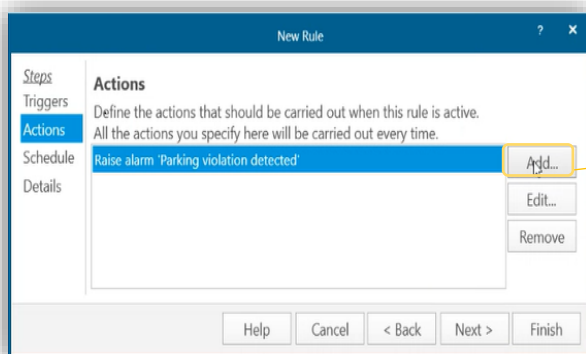
If an additional trigger occurs, the trigger period starts over from that point in time.

- In the “Filters” field select “Yes” and click “OK” to apply the new rule.

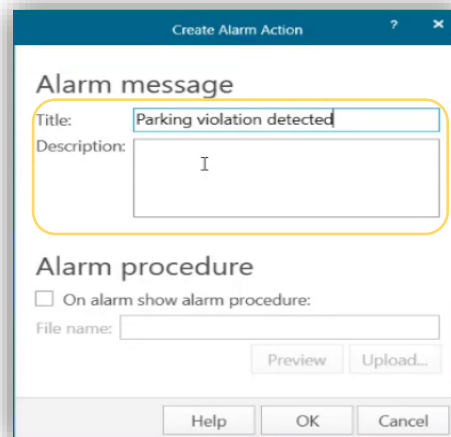
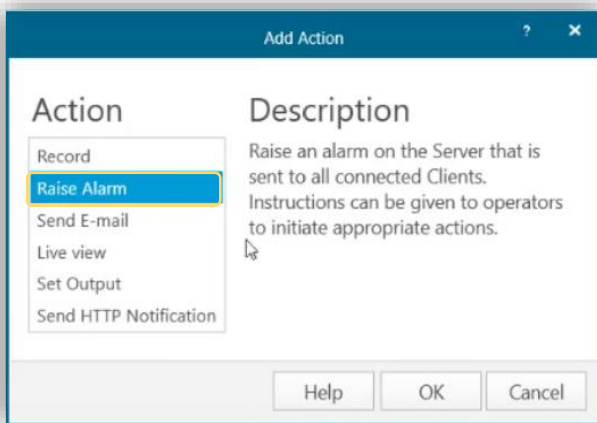


## Step 4 – Configure the actions – Raise alarm and Record Alarm

1. The next step is to add the actions to the Event trigger that you created. Press “Next” to start configuring the actions and press “Add...” to add your actions.

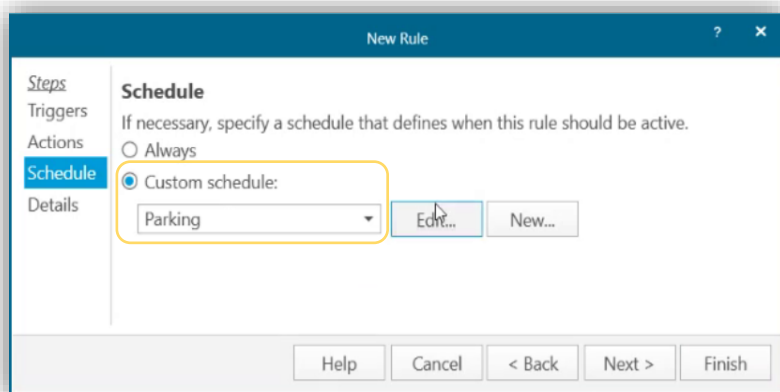


2. Add a “Raise Alarm” action to inform the operator of the parking violation detection. Enter the title of the alarm and the description and click “OK”.

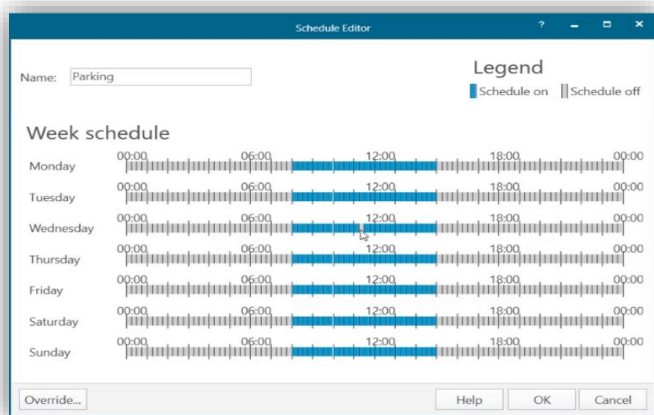


3. If needed, you can specify the hours when the alarm should be activated. To do so click “Next”. You can choose to have the alarm activated permanently (option “Always”) or customise the schedule according to your needs.

To customise the schedule, select “Custom Schedule”, choose the identity from the drop-down list and click “Edit”.



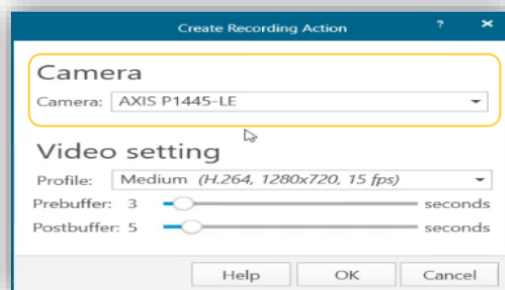
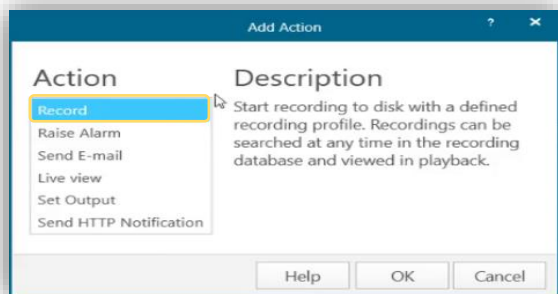
The schedule Editor appears allowing you to modify the hours for every day of the week. Click “OK” to confirm your schedule.



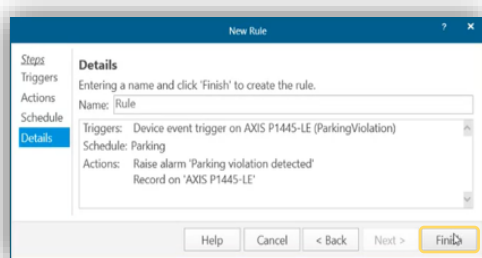
4. Typically, you would add a recording to an alarm notification. Select “Record” as the action and then select the camera to record. Change the Pre and Post buffers to suit.

## NOTE

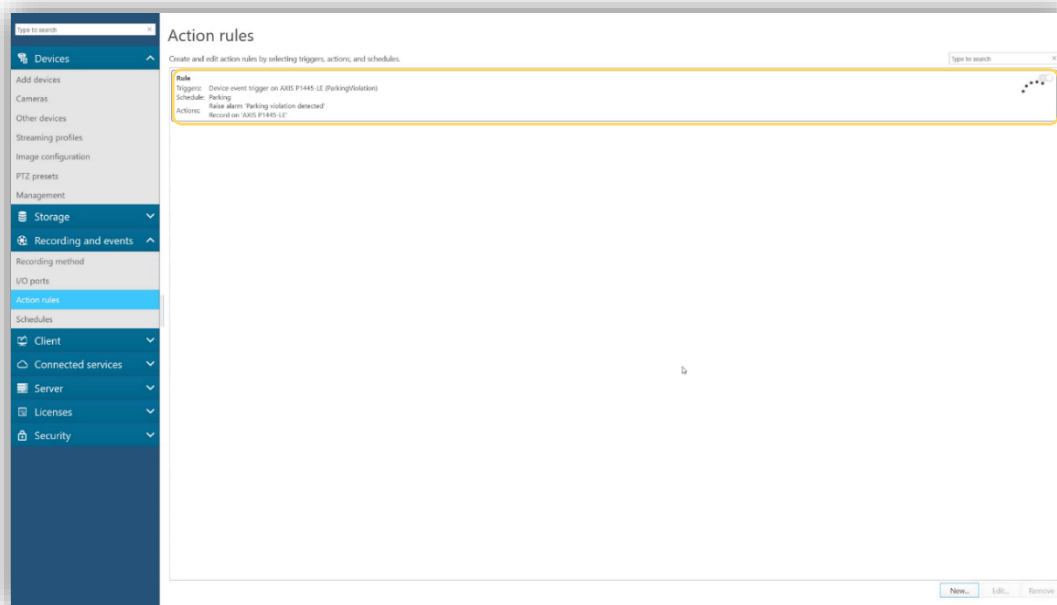
The prebuffer is limited to 60 sec. If the detection threshold is set higher than 60 sec., the instant when the vehicle has stopped won't be in the recording. To make sure that it is recorded, please use the option of permanent recording by selecting “Always” as indicated in the point 3 above.



5. Click “Next” to enter the name of the rule and see the details and click “Finish” to finalize the rule configuration.



You can see the list of all the rules that were created under “Action Rules”:

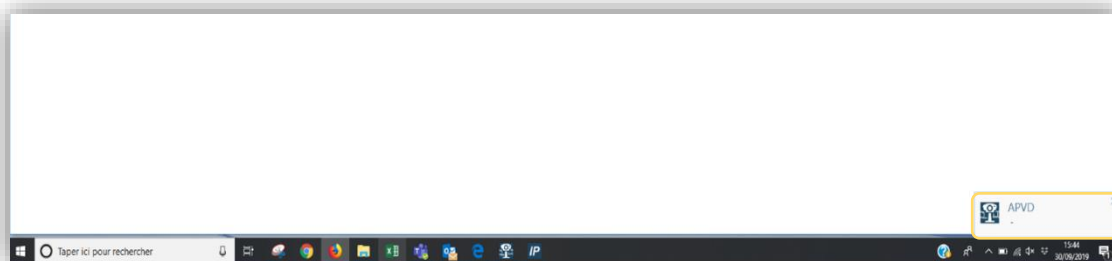




### Step 5 – Configuration validation

Make sure that the configuration is done according to the system specifications by simulating an incident or testing the user alarm. To find how to test the MVS integration please check [AXIS online manual](#).

You should be able to see the alarm notification appear on the bottom of your screen in the right-hand side corner.



Your alarm will appear on the list in the “Recording alerts” tab. The duration of the parking violation incident will be displayed on your recording.

