

## AXIS Q6358-LE PTZ Camera

4K UHD, AI-powered PTZ for extreme low light

AXIS Q6358-LE features an outstanding light-sensitive 1/2" inch sensor, 31x optical zoom, laser focus and quick zoom. Built on ARTPEC-9, it offers accelerated performance to run impressive analytics applications on the edge. For instance, *AXIS Object Analytics* can detect and classify humans, vehicles, and types of vehicles. This IP66-, IK10-, and NEMA 4x-rated device is impact- and weather-resistant. Plus, it's NEMA TS2 rated so it can be used in temperatures up to 74°C. Axis Zipstream with support for AV1, H.264, and H.265 significantly lowers bandwidth and storage requirements. Furthermore, Axis Edge Vault safeguards your device and protects sensitive information from unauthorized access.

- > 1/2" sensor with 31x optical zoom
- > Forensic WDR, Lightfinder, and OptimizedIR
- > Next-generation AI-powered analytics
- > Axis Zipstream with AV1, H.264, H.265
- > Built-in cybersecurity with Axis Edge Vault



# AXIS Q6358-LE PTZ Camera

## Camera

### Variants

AXIS Q6358-LE  
AXIS Q6358-LE NM (midspan not included)

### Image sensor

1/2" progressive scan CMOS

### Lens

Optical zoom: 31x  
Zoom speed: <1 sec between any zoom value  
Focal length: 6.91 – 214.64 mm  
Horizontal field of view: 58.5° – 2.3°  
Vertical field of view: 34.9° – 1.4°  
Laser focus, autofocus, P-iris

### Day and night

Automatically removable infrared-cut filter

### Minimum illumination

Color: 0.1 lux at 30 IRE, F1.36  
B/W: 0.005 lux at 30 IRE, F1.36, 0 lux with IR illumination on  
Color: 0.2 lux at 50 IRE, F1.36  
B/W: 0.009 lux at 50 IRE, F1.36, 0 lux with IR illumination on

### Shutter speed

1/111000 s to 1/2 s

### Pan/Tilt/Zoom

Pan: 360° endless, 0.05° – 550°/s  
Tilt: +20 to -90°, 0.05° – 500°/s  
Zoom: 31x optical, 12x digital, Total 372x zoom  
Quick-zoom, nadir flip, 300 preset positions, tour recording (max 10, max duration 16 minutes each), guard tour (max 100), control queue, on-screen directional indicator, set new pan 0°, adjustable zoom speed, speed dry

## System on chip (SoC)

### Model

ARTPEC-9

### Memory

4096 MB RAM, 8192 MB Flash

## Compute capabilities

Deep learning processing unit (DLPU)

## Video

### Video compression

AV1  
H.264 (MPEG-4 Part 10/AVC) Baseline, Main and High Profiles  
H.265 (MPEG-H Part 2/HEVC) Main Profile  
Motion JPEG

### Resolution

3840x2160 4K UHD

### Frame rate

Up to 50/60 fps (50/60 Hz) in all resolutions

### Video streaming

Multiple, individually configurable streams in AV1, H.264, H.265 and Motion JPEG  
Axis Zipstream technology in AV1, H.264 and H.265  
Controllable frame rate and bandwidth  
VBR/ABR/MBR AV1/H.264/H.265  
Low latency mode  
Video streaming indicator

### Signal-to-noise ratio

>55 dB

### Image settings

Compression, color, brightness, sharpness, white balance, exposure control, exposure zones, image freeze on PTZ, scene profiles, rotation, electronic image stabilization (EIS), defogging  
Contrast, local contrast, autofocus, Forensic WDR: Up to 120 dB depending on scene, 100 individual polygon privacy masks including mosaic and chameleon privacy masks

## Audio

### Input

Input through portcast technology

### Output

Output through portcast technology

## Network

### Network protocols

IPv4, IPv6 USGv6, ICMPv4/ICMPv6, HTTP, HTTPS<sup>1</sup>, HTTP/2, TLS<sup>1</sup>, QoS Layer 3 DiffServ, FTP, SFTP, CIFS/SMB, SMTP, mDNS (Bonjour), UPnP®, SNMP v1/v2c/v3 (MIB-II), DNS/DNSv6, DDNS, NTP, PTP, NTS, RTSP, RTCP, RTP, SRTP/RTSPS, TCP, UDP, IGMPv1/v2/v3, DHCPv4/v6, ARP, SSH, NTCIP, LLDP, CDP, MQTT v3.1.1, Secure syslog (RFC 3164/5424, UDP/TCP/TLS), Link-Local address (ZeroConf)

## System integration

### Application Programming Interface

Open API for software integration, including VAPIX® and AXIS Camera Application Platform; specifications at [axis.com](http://axis.com)

One-Click Cloud Connection

ONVIF® Profile G, ONVIF® Profile M, ONVIF® Profile S, and ONVIF® Profile T, specification at [onvif.org](http://onvif.org)

### Onscreen controls

IR illumination

Quick-zoom

Speed dry

### Event conditions

Device status: above operating temperature, above or below operating temperature, below operating temperature, fan failure, IP address removed, IP address blocked, live stream active, network lost, new IP address, PTZ power failure, system ready, within operating temperature

Edge storage: recording ongoing, storage disruption, storage health issues detected

I/O: manual trigger, virtual input<sup>2</sup>

MQTT: MQTT client connected

PTZ: PTZ malfunctioning, PTZ movement, PTZ preset position reached, PTZ ready

Scheduled and recurring: schedule

Video: average bitrate degradation, day-night mode

### Event actions

Day-night mode: Use day-night mode while the rule is active

Defog: set defog mode, set defog mode while the rule is active

Illumination: use lights, use lights while the rule is active

Images: FTP, SFTP, HTTP, HTTPS, network share and email

MQTT: MQTT publish

Notification: email, HTTP, HTTPS, TCP

Overlay text: use overlay text, use overlay text while the rule is active

Recordings: record video, record video while the rule is active

Security: erase configuration

SNMP: trap messages, trap messages while the rule is active

Video clips: FTP, HTTP, HTTPS, SFTP, email, network share

## Analytics

### Applications

#### Included

AXIS Object Analytics, AXIS Image Health Analytics, AXIS Scene Metadata, AXIS Video Motion Detection, AXIS OSDI Zone, Orientation Aid PTZ, advanced gatekeeper, autotracking 2

#### Supported

Support for AXIS Camera Application Platform enabling installation of third-party applications, see [axis.com/acap](http://axis.com/acap)

### AXIS Object Analytics

**Object classes:** humans, vehicles (types: cars, buses, trucks, bikes, other)

**Scenarios:** line crossing, object in area, time in area, crossline counting, tailgating detection, PPE monitoring<sup>BETA</sup>, motion in area, motion line crossing  
Up to 10 scenarios

**Other features:** triggered objects visualized with trajectories, color-coded bounding boxes and tables  
Polygon include/exclude areas  
Perspective configuration  
ONVIF Motion Alarm event

### AXIS Image Health Analytics

#### Detection settings:

Tampering: blocked image, redirected image

Image degradation: blurred image, underexposed image

**Other features:** sensitivity, validation period

1. This product includes software developed by the OpenSSL Project for use in the OpenSSL Toolkit. ([openssl.org](http://openssl.org)), and cryptographic software written by Eric Young ([ey@cryptsoft.com](mailto:ey@cryptsoft.com)).

2. Only available with midspan.

## AXIS Scene Metadata

**Object classes:** humans, faces, vehicles (types: cars, buses, trucks, bikes), license plates

**Object attributes:** vehicle color, upper/lower clothing color, confidence, position

## Approvals

### EMC

EN 55032 Class A, EN 55035, EN 61000-3-2, EN 61000-3-3, EN 61000-6-1, EN 61000-6-2, CISPR 35, EAC, EN 50121-4

**Australia/New Zealand:** RCM AS/NZS CISPR 32 Class A

**Canada:** ICES-3(A)/NMB-3(A)

**Japan:** VCCI Class A

**Korea:** KS C 9835, KS C 9832 Class A

**USA:** FCC Part 15 Subpart B Class A

**Railway:** IEC 62236-4

### Safety

IEC/EN/UL 62368-1, CAN/CSA C22.2 No. 62368-1, IEC/EN 62471 risk group 2, IEC 60825-1 Class 1

### Environment

IEC/EN 62262 IK10, IEC/EN 60529 IP66, IEC/EN 60529 IP67, NEMA 250, Type 4X, NEMA TS 2 (2.2.7–2.2.9), IEC 60068-2-1, IEC 60068-2-2, IEC 60068-2-6, IEC 60068-2-14, IEC 60068-2-27, IEC 60068-2-78, ISO 21207 (Method B), ISO 12944-6 C5

### Network

NIST SP500-267

### Cybersecurity

ETSI EN 303 645, BSI IT Security Label, FIPS 140

## Cybersecurity

### Edge security

**Software:** Signed OS, brute force delay protection, digest authentication and OAuth 2.0 RFC6749 Client Credential Flow/OpenID Authorization Code Flow for centralized ADFS account management, password protection, AES-XTS-Plain64 256bit SD card encryption

**Hardware:** Axis Edge Vault cybersecurity platform  
Secure keystore: secure element (CC EAL6+, FIPS 140-3 Level 3), system-on-chip security (TEE)  
Axis device ID, signed video, secure boot, encrypted filesystem (AES-XTS-Plain64 256bit)

## Network security

IEEE 802.1X (EAP-TLS, PEAP-MSCHAPv2)<sup>3</sup>, IEEE 802.1AE (MACsec PSK/EAP-TLS), HTTPS/HSTS<sup>3</sup>, TLS v1.2/v1.3<sup>3</sup>, Network Time Security (NTS), X.509 Certificate PKI, host-based firewall

## Documentation

*AXIS OS Hardening Guide*

*Axis Vulnerability Management Policy*

*Axis Security Development Model*

AXIS OS Software Bill of Material (SBOM)

To download documents, go to [axis.com/support/cybersecurity/resources](https://axis.com/support/cybersecurity/resources)

To read more about Axis cybersecurity support, go to [axis.com/cybersecurity](https://axis.com/cybersecurity)

## General

### Casing

IP66-, IP67-, NEMA 4X- and IK10-rated

Color: white NCS S 1002-B

Repaintable metal casing (aluminum), hard coated

Polycarbonate (PC) clear dome with Sharpdome technology

### Power

IEEE802.3bt Type 3 Class 6

Possibility to optimize power consumption of camera:

Full power: typical 13.7 W (no IR), max 51 W

Low power: typical 13.7 W (no IR), max 30 W. With IR: 40 W

Features: power profiles, power meter

### Connectors

RJ45 10BASE-T/100BASE-TX/1000BASE-T

RJ45 Push-pull Connector (IP66)

### IR illumination

OptimizedIR with power-efficient, long-life 850 nm IR LEDs

Range of reach 300 m (984 ft) or more depending on the scene

### Storage

Support for SD/SDHC/SDXC card

Support for SD card encryption (AES-XTS-Plain64 256bit)

Support for recording to network-attached storage (NAS)

For SD card and NAS recommendations see [axis.com](https://axis.com)

3. This product includes software developed by the OpenSSL Project for use in the OpenSSL Toolkit. ([openssl.org](https://openssl.org)), and cryptographic software written by Eric Young ([ey@cryptsoft.com](mailto:ey@cryptsoft.com)).

## Operating conditions

Full power: -50 °C to 55 °C (-58 °F to 131 °F)  
Low power: -10 °C to 55 °C (14 °F to 131 °F)  
Maximum temperature according to NEMA TS 2 (2.2.7): 74 °C (165 °F)  
Arctic Temperature Control: Start-up as low as -40 °C (-40 °F)  
Humidity 10–100% RH (condensing)  
Wind load (sustained): 60 m/s (135 mph)<sup>4</sup>

---

## Storage conditions

-40 °C to 65 °C (-40 °F to 149 °F)  
Humidity 5–95% RH (non-condensing)

---

## Dimensions

Height: 261 mm (10.3 in)  
With weather shield: ø 239 mm (9.4 in)  
Without weather shield: ø 192 mm (7.6 in)  
Effective Projected Area (EPA): 0.045 m<sup>2</sup>

---

## Weight

4 400 g (9.7 lb)

---

## Included accessories

Installation guide, Windows® decoder 1-user license, 90 W Midspan (including power cable)<sup>5</sup>, IP66-rated network connector, repaint template, paint paper

---

## Optional accessories

AXIS TQ6808-E Hard-Coated Clear Dome  
AXIS TQ6815-E Dome Hard-Coated Smoked  
AXIS TU8003 90 W Connectivity Midspan  
AXIS T91/T94 Mounting Accessories  
AXIS Surveillance Cards  
For more accessories, see [axis.com](https://axis.com)

---

## Video management software

AXIS Companion, AXIS Camera Station, video management software from Axis Application Development Partners available at [axis.com/vms](https://axis.com/vms)

---

## Languages

English, German, French, Spanish, Italian, Russian, Simplified Chinese, Japanese, Korean, Portuguese, Polish, Traditional Chinese, Dutch, Czech, Swedish, Finnish, Turkish, Thai, Vietnamese

---

## Warranty

5-year warranty, see [axis.com/warranty](https://axis.com/warranty)

## Sustainability

### Substance control

PVC free, BFR/CFR free in accordance with JEDEC/ECA Standard JS709  
RoHS in accordance with EU RoHS Directive 2011/65/EU and 2015/863, and standard EN IEC 63000:2018  
REACH in accordance with (EC) No 1907/2006. For SCIP UUID, see [echa.europa.eu](https://echa.europa.eu)

---

### Materials

Renewable carbon-based plastic content: 23% (recycled: 18%, bio-based: 5%, carbon capture based: 0%)  
Screened for conflict minerals in accordance with OECD guidelines  
To read more about sustainability at Axis, go to [axis.com/about-axis/sustainability](https://axis.com/about-axis/sustainability)

---

### Environmental responsibility

[axis.com/environmental-responsibility](https://axis.com/environmental-responsibility)  
Axis Communications is a signatory of the UN Global Compact, read more at [unglobalcompact.org](https://unglobalcompact.org)

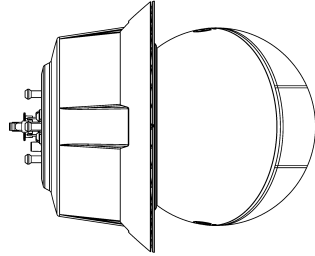
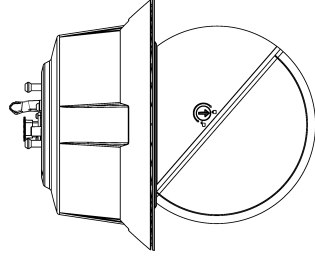
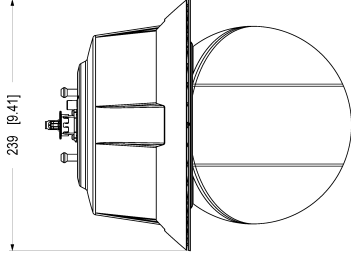
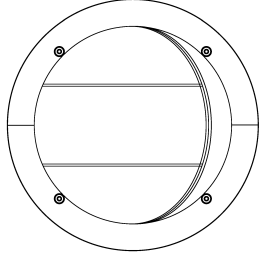
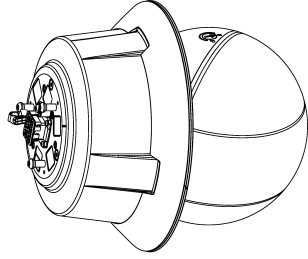
4. The values shown are based on results from actual wind tunnel testing. For drag force calculations, use Effective Projected Area (EPA).

5. Not included for AXIS Q6355-E NM.

**Detect, Observe, Recognize, Identify (DORI)**

	DORI definition	Distance (wide)	Distance (tele)
Detect	25 px/m (8 px/ft)	138.3 m (453.6 ft)	3674.4 m (12052 ft)
Observe	63 px/m (19 px/ft)	54.9 m (180 ft)	1457.6 m (4780.9 ft)
Recognize	125 px/m (38 px/ft)	27.6 m (90.5 ft)	734.2 m (2408 ft)
Identify	250 px/m (76 px/ft)	13.8 m (45.3 ft)	366.7 m (1203 ft)

The DORI values are calculated using pixel densities for different use cases as recommended by the EN-62676-4 standard. The calculations use the center of the image as the reference point and consider lens distortion. The possibility to recognize or identify a person or object depends on factors such as object motion, video compression, lighting conditions, and camera focus. Use margins when planning. The pixel density varies across the image, and the calculated values can differ from the distances in the real world.



Ø 188 [7.4]

