

HOW TO.

Integration Guide for Genetec™ Security Center and Axis body worn system

Contents

Introduction	3
Step 1 – Prepare Security Center Server	4
Step 2 – Create a connection file in Security Center	5
Step 3 – Install and configure Axis body worn system	6
Step 4 – Create a recording and upload to Security Center	7
Example use case – Assign a different user to a camera	9

Introduction

This document explains how to integrate Axis body worn system with Genetec™ Security Center. It assumes the reader has basic knowledge of Axis body worn system and Security Center.

Before you begin, ensure a valid Genetec™ body worn camera license is added to Security Center server for each camera user.

Prerequisites

Axis body worn system

Axis body worn system firmware 9.75.1 or above

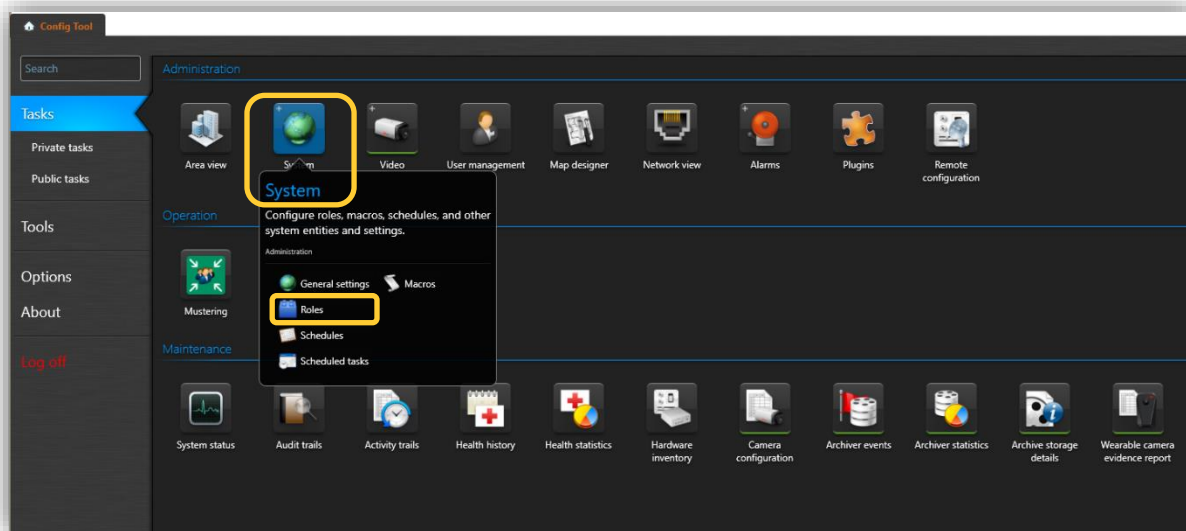
AXIS IP Utility version 4.14 or above

Security Center 5.9.2 or above

Please note that Axis doesn't take any responsibility for how this configuration may affect your system. If the modification fails or if you get other unexpected results, you may have to restore the settings to default.

Step 1 – Prepare Security Center Server

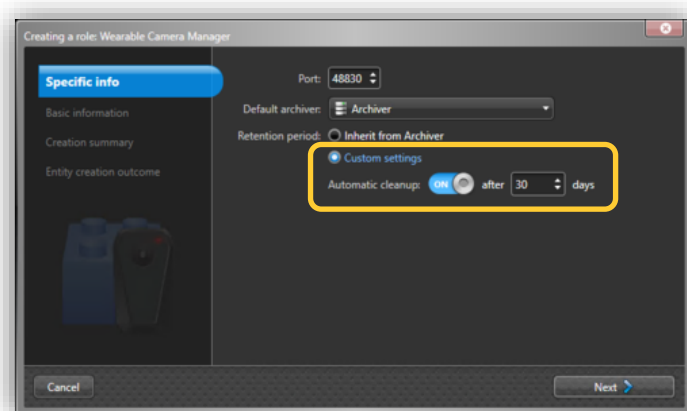
1. To integrate with body worn system, the “Wearable Camera Manager” role needs to be added to the Security Center server connected to Axis body worn system. Start **Config tool** and select **System** task. Choose **Roles > Add an entity > Wearable Camera Manager**.



2. It is recommended to adjust the retention time to a value that is long enough by choosing **Custom settings** in the Specific info section.



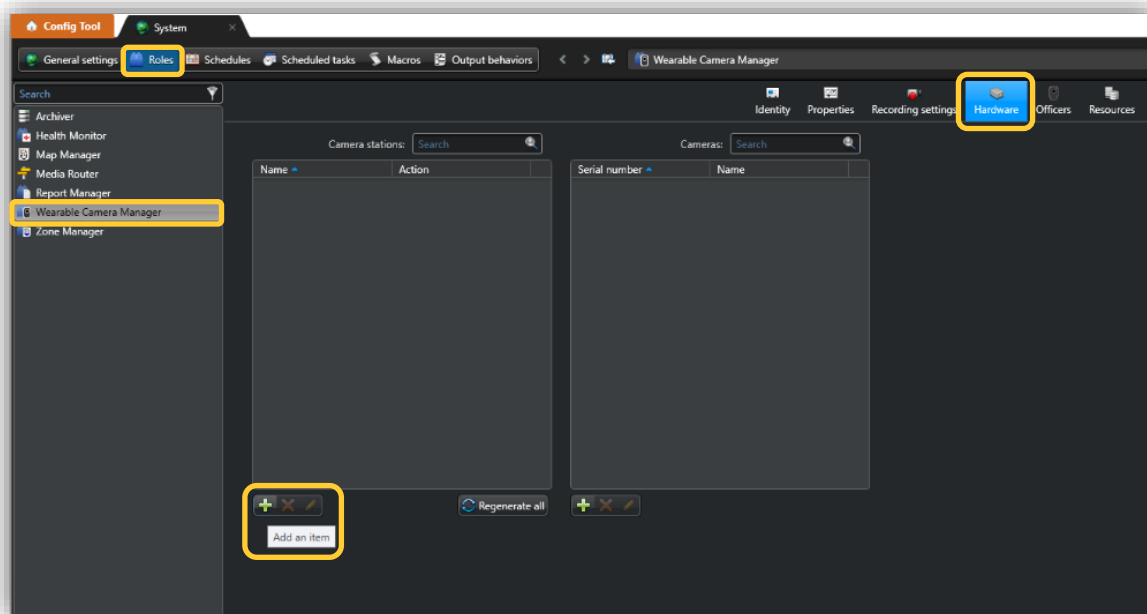
If the retention time is set to 30 days, docking a camera that hasn't been docked for 30 days or more will result in recordings from the camera being removed right after the upload.



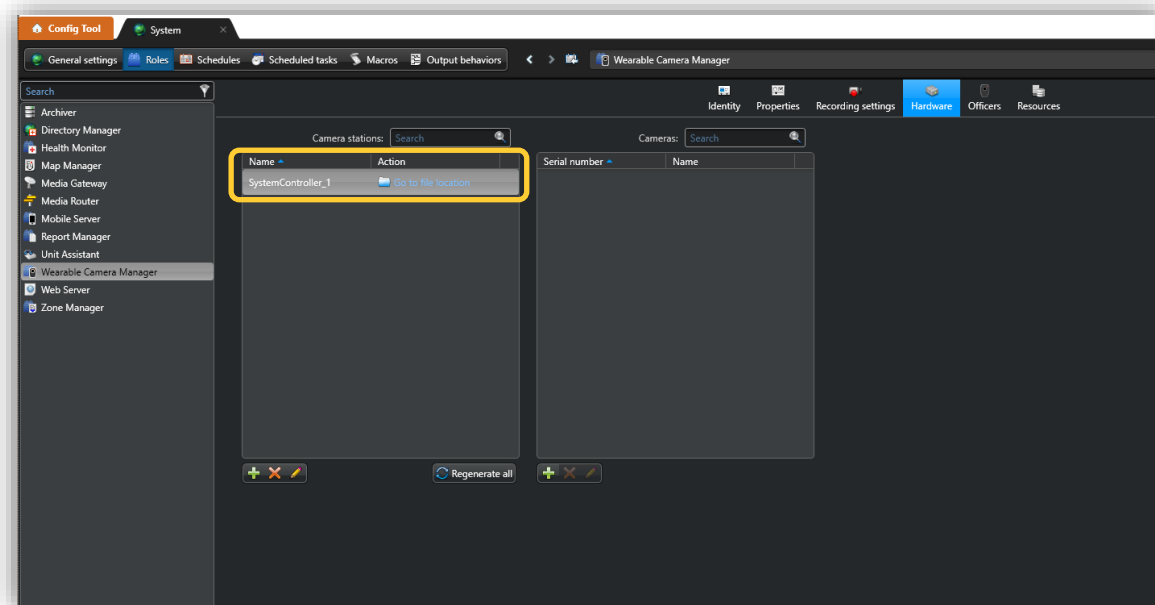
3. It is important to open both firewall ports 48830 and 48831 on the security center server to allow communications to Axis body worn system. Port 48831 is used to upload recordings.

Step 2 – Create a connection file in Security Center

1. In **System > Roles** tab, choose **Wearable Camera Manager**. In **Hardware** tab, add a camera station by clicking on + and name it by “SystemController_1” for example.



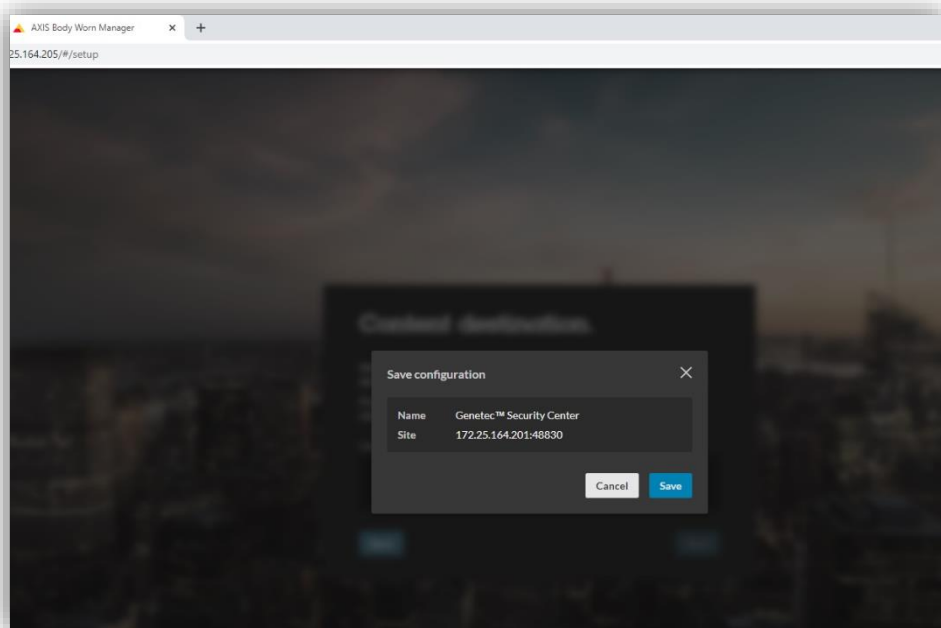
2. Once added, click on **Go to file location**. A .json file “SystemController_1.json” is created which can be uploaded to Axis body worn system later.



For more details, go to Security Center user documentation.

Step 3 – Install and configure Axis body worn system

1. Install your body worn system.
2. Find the system controller using AXIS IP Utility. Access AXIS Body Worn Manager and follow the setup wizard to configure the system. Upload the previously created connection file “SystemController_1.json” when prompted to **Select a content destination**.

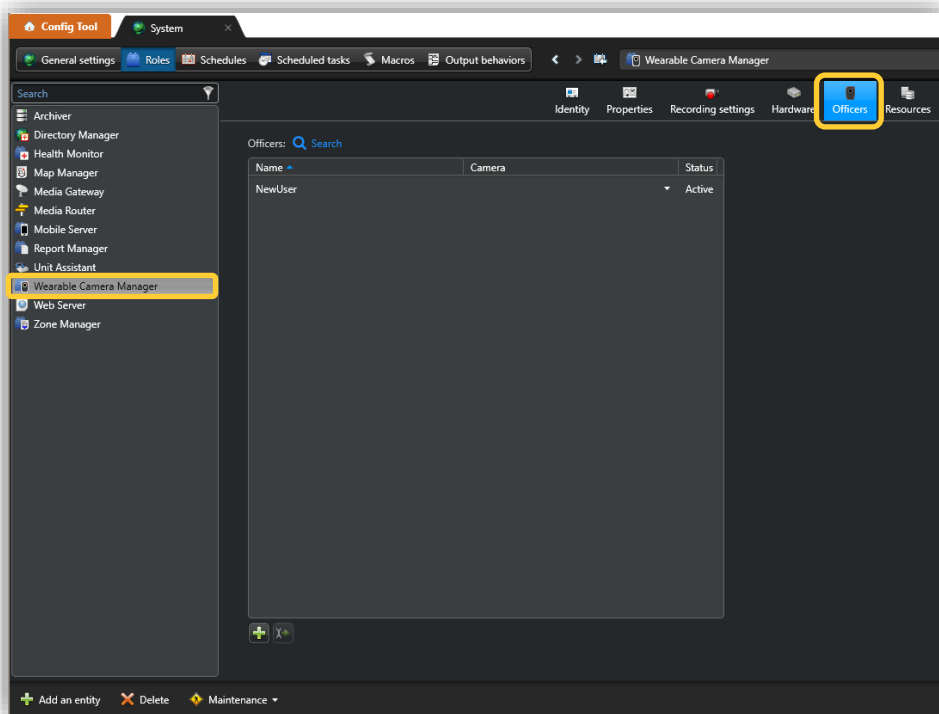
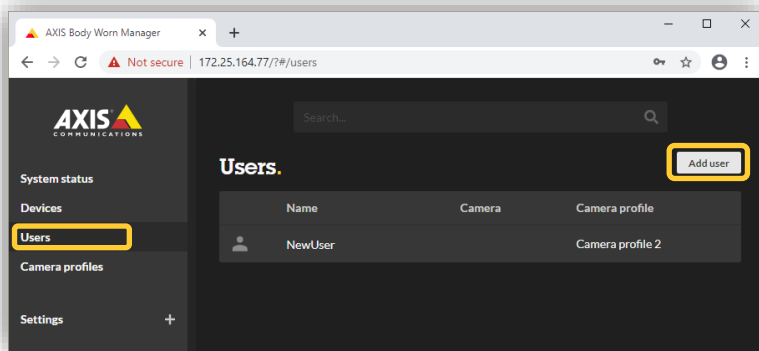


NOTE During the setup, make sure the time and time zone configuration of your body worn system is in sync with the time and time zone configuration in Security Center server.

3. Create a camera user e.g. “NewUser” in AXIS Body Worn Manager (Go to **Users** page and click on **Add user** on the top right). When this is done, a corresponding officer “NewUser” will appear in the **Officers** tab of **Wearable Camera Manager** in Security Center, which represent one license.



Make sure there are enough licenses in Security Center. Otherwise, recordings will not be uploaded from the system controller.

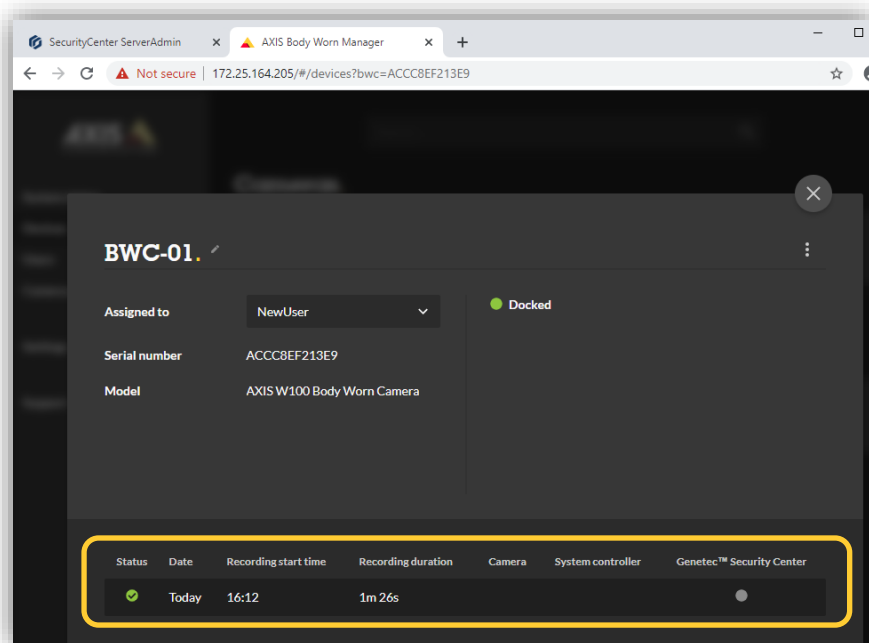


4. Dock a new camera on the docking station connected to the system controller. It will be discovered by AXIS Body Worn Manager automatically. Add the camera (named "BWC-01" by default) and assign it to the newly created camera user "NewUser". Now the camera is ready to use.

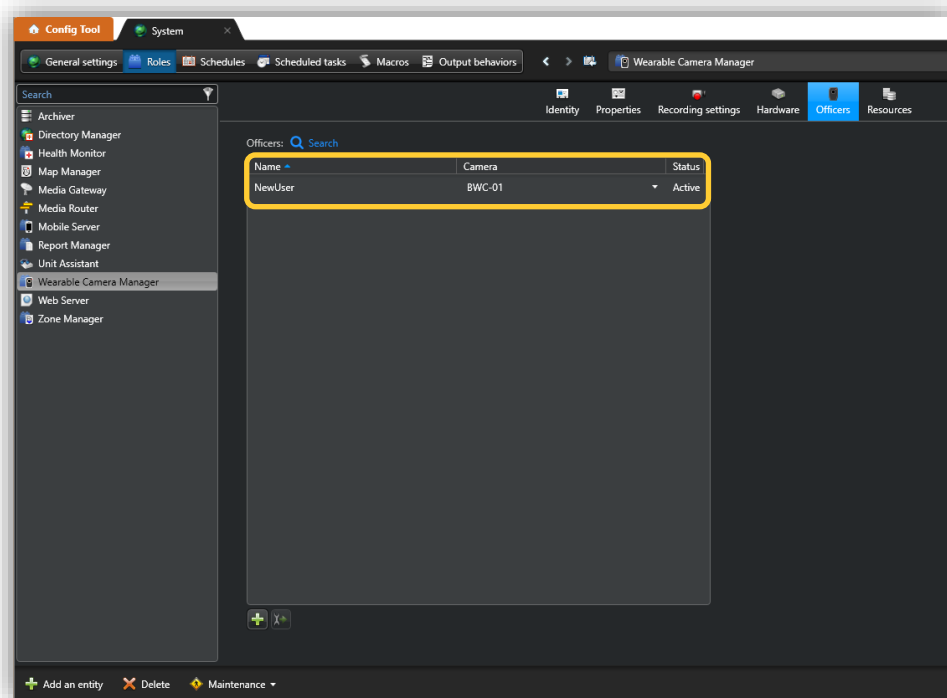
For more details, go to the user manual for Axis body worn solution.

Step 4 – Create a recording and upload to Security Center

1. Undock the camera and make a recording before docking it again. The recording together with the metadata will be transferred to the system controller and further on to Genetec™ Security Center server. The transfer status can be monitored in AXIS Body Worn Manager (Go to **Devices** page and click on the camera in **Cameras** list).



2. Once the recording arrives at Genetec™ Security Center server, the camera “BWC-01” appears as assigned to the officer “NewUser”. Please note: This requires that the time difference between Axis body worn system and Security Center server is smaller than 15 seconds. Otherwise, a default officer named as the camera’s MAC address is created. All recordings created with that camera will be uploaded to the default officer.



Recordings from body worn cameras can be played back and searched in the same way as any other Axis camera in Security Center.



Always use AXIS Body Worn Manager instead of Security Center to manage (add, rename, assign and remove) body worn cameras and users, otherwise cameras and officers in Security Center won't match cameras and users in AXIS Body Worn Manager, which may cause unexpected behavior.

Example use case – Assign a different user to a camera

1. Access AXIS Body Worn Manager and create a new user “NewUser1”. An officer named “NewUser1” is created in Genetec™ Security Center server accordingly.
2. In AXIS Body Worn Manager, go to **Devices** and click on the camera “BWC-01”. Select “NewUser1” in the **Assigned to** list. “NewUser1” will be assigned to the camera the next time it is docked.
3. Create a new recording with “BWC-01” and dock it. The recording will be uploaded to the new officer “NewUser1” in Security Center. In the meantime, “BWC-01” is shown as assigned to the new officer “NewUser1”.
4. If the original user “NewUser” is no longer needed, it could be removed from AXIS Body Worn Manager. The corresponding officer “NewUser” in Security Center will become inactive, which means it no longer takes a license but all the previous recordings that belong to that officer are kept until the retention period is over.