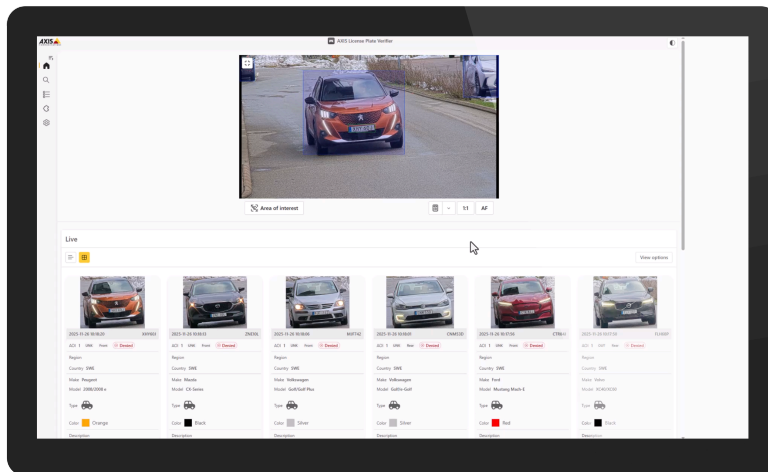


AXIS License Plate Verifier

Hassle-free license plate recognition

AXIS License Plate Verifier is an edge-based analytics application for license plate recognition, designed for vehicle access control as well as license plate recognition in free-flow traffic at both moderate and high speeds, depending on camera model and installation. Operating directly on the camera, it enables real-time vehicle identification without dedicated servers, reducing system complexity and bandwidth use. AI-powered recognition delivers high accuracy and can also identify vehicle type, color, make, and model under optimal conditions. Detected vehicles are logged as timestamped events with thumbnail images, supporting efficient review and follow-up. Allowlists and blocklists enable automated access control, while purpose-tuned kits ensure fast installation and consistent, high-precision results.

- > **Reliable LPR for vehicle access and free-flow traffic at moderate to high speeds**
- > **Ideal for vehicle access control, parking solutions, and vehicle search**
- > **Simple administration with allow- and blocklists**
- > **Recognition of vehicle type, color, make, and model**
- > **Purpose-tuned all-in-one kits available**



AXIS License Plate Verifier

Application

Compute platform

Edge

Supported devices

For a complete list of recommended and supported products, go to the product page at axis.com

Licenses

Single license codes can be purchased from an Axis distributor. One license is required per camera.

Configuration

Web configuration included

Settings

Define area of interest in scene.

Allow- and blocklist logic. Each list can contain 10,000 plates.

Missing plate detection.

Barrier mode: Open to all, open to allowlisted, open to all but blocklisted.

Minimum width: 130 pixels for one-row license plates; 70 pixels for two-row license plates.

FIFO event log entries including thumbnail image of license plate. Up to 1000 entries on camera storage. Up to 100 000 entries on AXIS Surveillance Cards.

Configurable retention time of stored events

Detection range

Depends on the camera model.

Vehicle speed

Depends on the camera model.

Object attributes

Vehicle data: license plate recognition, license plate type (GCC), make, model, color, country, region.

Supports 120 makes and 5000 models. More models will be added over time.

Object classes

Vehicle type: bike, car, SUV, van, pick-up, truck, bus

System integration

Application Programming Interface

Open API for software integration.

Event streaming

Integrates with camera event management system to enable event streaming to management software and camera actions such as I/O control, notification, and edge storage.

Supported devices

Direct integration with Axis network door controllers and relay modules.

Scenarios

Typical applications

Free-flow traffic monitoring

Reads license plates up to 200 km/h (124 mph).

Ideal for city centers, larger access roads, toll plazas, and areas like campuses, harbors or airports.

Enables event triggers in a VMS, such as AXIS Camera Station to facilitate LPR-based search.

Vehicle access control

Efficiently automates the entry and exit procedures for authorized vehicles at depots, service centers, lots, priority lanes, parking facilities, and various other locations.

Validates license plates against allowlists or blocklists for efficient, seamless access control.

Adding more functionality

Integrate with Axis network door controllers for increased options and functionality.

Axis network door controllers, in conjunction with AXIS Camera Station Secure Entry, support more advanced access rules, schedules, and detailed event logs.

Compatible with various partner software from 2N IP Device, Genetec and Milestone, offering diverse credential options and tailored features to meet specific needs.

General

Supported countries

For a complete list of supported countries, go to the product page at axis.com

Languages

English