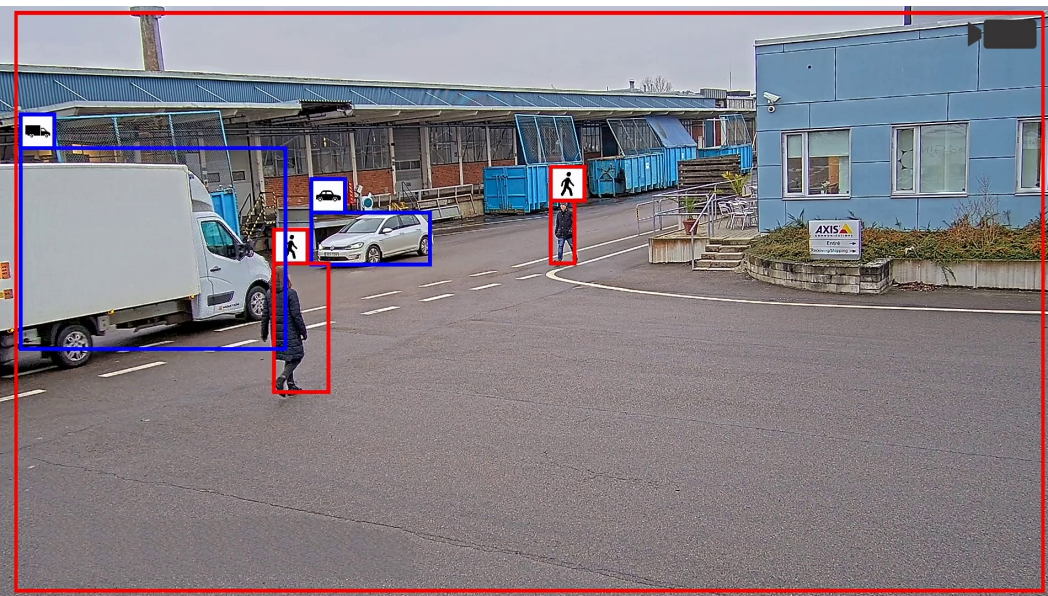


AXIS Object Analytics

AI-based object detection and classification

This versatile video analytics comes preinstalled on compatible Axis cameras, adding value at no extra cost. It detects and classifies humans, vehicles, and types of vehicles. Thanks to AI-based algorithms and behavioral conditions, it analyzes the scene and spatial behavior of the objects within – all tailored to your specific needs. Suitable for a wide range of applications, this scalable, edge-based analytics requires minimum set up and supports various scenarios running simultaneously. Using the camera's event management system, it integrates with all major video management systems. Designed to enable proactive monitoring and access to actionable insights, you can quickly verify detected events or set up automatic responses.

- > **Edge-based video analytics**
- > **Classifies humans and vehicles**
- > **Runs multiple scenarios simultaneously**
- > **Flexible and easy configuration**
- > **Preinstalled at no extra cost**



AXIS Object Analytics

General

Typical use cases Detecting objects that move, cross a line, or stay for a set time at parking lots, industrial premises, public buildings, and warehouses.

Supported devices Preinstalled on compatible Axis cameras with an MLPU^a or DLPU^b. For a complete list, see [axis.com](https://www.axis.com)

Compute platform Edge

Configuration Through web browser: Chrome™ or Firefox®

Languages English

Capabilities

Scenarios Up to 10 scenarios with individually configurable trigger conditions.
Optional perspective configuration.

Object classes MLPU^a cameras: Humans, vehicles.
DLPU^b cameras: Humans, vehicles. Vehicle types: cars, buses, trucks, bikes (motorcycles/bicycles).

Trigger conditions Object in area
Time in area^{BETA}
Line crossing

Limitations Insufficient contrast can affect detection and classification performance.

System integration

Application Programming Interface Open API for software integration, including VAPIX®, AXIS Camera Application Platform; specifications at [axis.com](https://www.axis.com)
ONVIF® Profile M, specification at onvif.org

Event management Integrates with the camera to enable event streaming to a video management system (VMS) and event actions such as external output activation, notifications, and edge storage.
ONVIF® motion alarm event (Ref: ONVIF Service Imaging Specification)

Metadata overlay Highlights trigger conditions and adds trajectories and color-coded bounding boxes around detected objects.

a. MLPU = machine learning processing unit

b. DLPU = deep learning processing unit

Environmental responsibility:

[axis.com/environmental-responsibility](https://www.axis.com/environmental-responsibility)