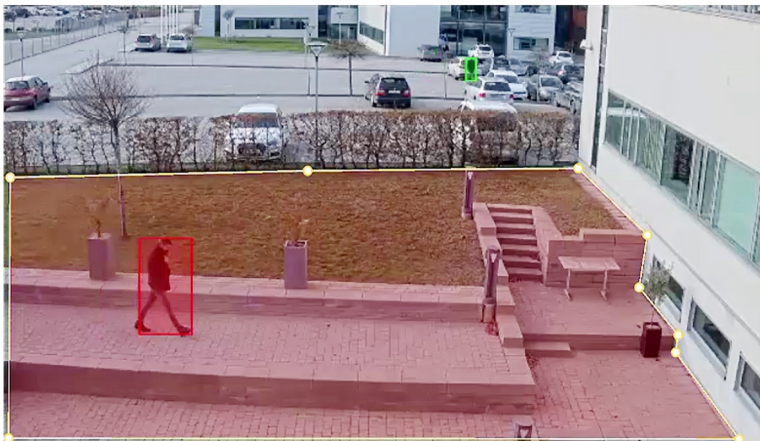


AXIS Motion Guard

Smart motion detection

AXIS Motion Guard is a video motion detection application that triggers an event whenever an object, such as a person or vehicle of relevant size, moves within predefined areas in a camera's field of view. Support for multiple profiles allows you to set up different "include" areas or have different configurations for daytime and nighttime. Filters and perspective configuration help reduce false alarms. Alarm overlays in live or recorded video make clear what objects are triggering the alarms. AXIS Motion Guard is ideal for after-hours monitoring of office buildings, retail stores, industrial properties and vehicle depots.

- > [Video motion detection](#)
- > [Edge-based video analytics](#)
- > [Multiple profiles for extra flexibility](#)
- > [Perspective tool for fewer false alarms](#)
- > [Bounding box alarm overlay](#)



AXIS Motion Guard

General

| | |
|--------------------------|---|
| Typical use cases | General low-traffic areas such as after-hours monitoring of office buildings, retail stores, industrial properties, vehicle depots and other unattended areas |
| Supported devices | Axis video products with firmware 7.10 or higher. |
| Compute platform | Edge |
| Configuration | Web configuration included |
| Languages | English, German, French, Polish, Spanish, Italian, Russian, Simplified Chinese, Traditional Chinese, Japanese, Korean, Portuguese |

Capabilities

| | |
|--------------------|--|
| Scenarios | Multiple profiles can be configured to adapt for different scenarios. Up to 10 profiles for all cameras except multichannel products which have up to 3 concurrent profiles. One include area and 3 exclude areas per profile (10-point polygons) Visual confirmation to verify setup Filters for small, short-lived or swaying objects Perspective configuration |
| Limitations | Conditions such as heavy rain, snow, or low contrast, might affect detection accuracy. For more information, see the user manual at axis.com . The resolution of video streams with alarm overlay enabled is limited to 1920 pixels in width and the corresponding height for the current aspect ratio. |

System integration

| | |
|--|--|
| Application Programming Interface | Open API for software integration, including VAPIX® and AXIS Camera Application Platform; specifications at axis.com |
| Event management | Integrates with the camera to enable event streaming to a video management system (VMS) and event actions such as I/O control, notification, and edge storage. ONVIF® motion alarm event (Ref: ONVIF Service Imaging Specification) |
| Metadata | Alarm overlay in one selected video resolution, displays bounding boxes around alarm-triggering objects. |

Environmental responsibility:

axis.com/environmental-responsibility