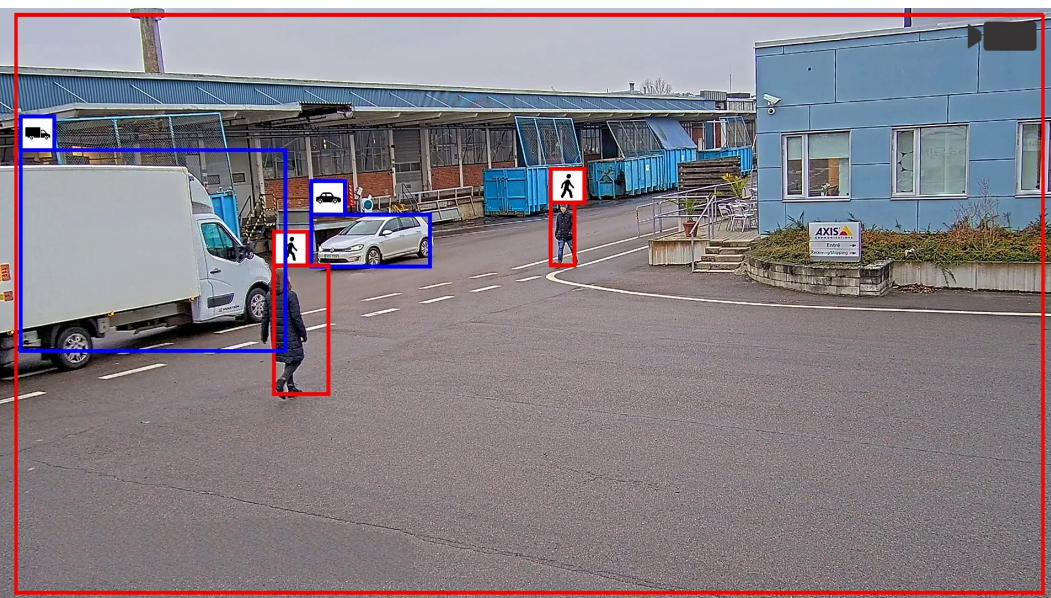


# AXIS Object Analytics

## AI-based object detection and classification

This multifeatured video analytics comes preinstalled on compatible Axis cameras, adding value at no extra cost. It detects and classifies humans, vehicles, and types of vehicles. Thanks to AI-based algorithms and behavioral conditions, it analyzes the scene and spatial behavior of the objects within – all tailored to your specific needs. This scalable, edge-based analytics requires minimum set up and supports various scenarios running simultaneously. Using the camera's event management system, it integrates with all major video management systems. Designed to enable proactive monitoring you can quickly verify detected events or set up automatic responses and collect data to access actionable insights.

- > Edge-based video analytics
- > Classifies humans and vehicles
- > Runs multiple scenarios simultaneously
- > Flexible and easy configuration
- > Preinstalled at no extra cost



# AXIS Object Analytics

## General

<b>Typical use cases</b>	Detecting objects that move within a defined area, cross a tripwire, or stay in an area for a set time. Counting objects in an area or crossing a tripwire. Suitable for both indoor and outdoor use.
<b>Supported devices</b>	Preinstalled on compatible Axis cameras with an MLPU <sup>a</sup> or DLPU <sup>b</sup> . For a complete list, see <a href="https://axis.com/products/axis-object-analytics/support#compatible-products">axis.com/products/axis-object-analytics/support#compatible-products</a>
<b>Compute platform</b>	Edge
<b>Configuration</b>	Through web browser: Chrome™, Firefox®, or Edge™
<b>Languages</b>	English

## Capabilities

<b>Scenarios</b>	Up to 10 scenarios with individually configurable trigger conditions. Optional perspective configuration.
<b>Object classes</b>	MLPU <sup>a</sup> cameras: Humans, vehicles. DLPU <sup>b</sup> cameras: Humans, vehicles. Vehicle types: cars, buses, trucks, bikes (motorcycles/bicycles).
<b>Features</b>	Object in area Time in area Line crossing Crossline counting <sup>BETA</sup> Occupancy in area <sup>BETA</sup> Features can vary between products. <sup>c</sup>
<b>Limitations</b>	Insufficient contrast can affect detection and classification performance.

## System integration

<b>Application Programming Interface</b>	Open API for software integration, including VAPIX®, AXIS Camera Application Platform; specifications at <a href="https://axis.com">axis.com</a> ONVIF® Profile M, specification at <a href="https://onvif.org">onvif.org</a>
<b>Event management</b>	Integrates with the camera to enable event streaming to a video management system (VMS), uploading of counting data to third-party software, and event actions such as external output activation, notifications, and edge storage. ONVIF® motion alarm event (Ref: ONVIF Service Imaging Specification)
<b>Metadata overlay</b>	Highlights trigger conditions and adds trajectories and color-coded bounding boxes around detected objects. For crossline counting and occupancy in area, shows table with counts per object class and type. <sup>d</sup>

a. MLPU = machine learning processing unit

b. DLPU = deep learning processing unit

c. For more information, see [axis.com/products/axis-object-analytics/support#compatible-products](https://axis.com/products/axis-object-analytics/support#compatible-products)

d. Metadata overlays can vary between products. For more information, see the product datasheet.