

AXIS Q60-E Series

AXIS Q6074-E PTZ Network Camera

AXIS Q6075-E PTZ Network Camera

Repainting Instructions

AXIS Q60-E Series

Impact on warranty

Impact on warranty

This product is approved for repaint by Axis, provided that you follow the instructions in this document and at www.axis.com/warranty-implication-when-repainting

Risks with repainting

There are several risks when disassembling or assembling an Axis product. There is always a certain yield loss during assembly. Training of operators and the use of correct tools mediates some of the problems but they can never be fully avoided. Some of the risks include:

ESD Damage – Always handle the product in an ESD safe environment. Even if precautions are taken there is always a risk of ESD damage. The damage can remain undetected and cause problems during the lifetime of the equipment.

Dust contamination – Opening a camera may expose the lens and sensor to dust or paint. Dust will affect the optical performance. Lenses need to be disassembled in a dust-free environment, preferably a cleanroom.

Paint overspray – Masking the different components of the equipment is critical. Failure to mask sensitive areas can cause problems with assembling the equipment. Any areas that are not painted at factory or have a different surface treatment than the rest of the parts (threads, ground and electrical contact surfaces) must also be masked to ensure function.

AXIS Q60-E Series

Repaint the product

Repaint the product

Preparations

- If applicable, disassemble the device according to the instructions in this document.
- Clean all parts to be repainted thoroughly to remove grease, dust, or oil.
- To ensure reassembly and functionality of the product, mask any openings (for example for screws, LED indicators, or microphones) before you paint.

Pretreatment of parts

Depending on the part material and type of paint applied at factory, different pretreatment should be done for the new paint to adhere as well as possible. Clean the parts properly to remove oil, grease and dust.

For more information on the materials used in the product, see its datasheet at www.axis.com

Powder coated parts – Use a primer. Alternatively, remove the original powder coating down to the base material, using fine sandpaper, and clean the parts before painting.

Anodised and chromated parts – Use a primer.

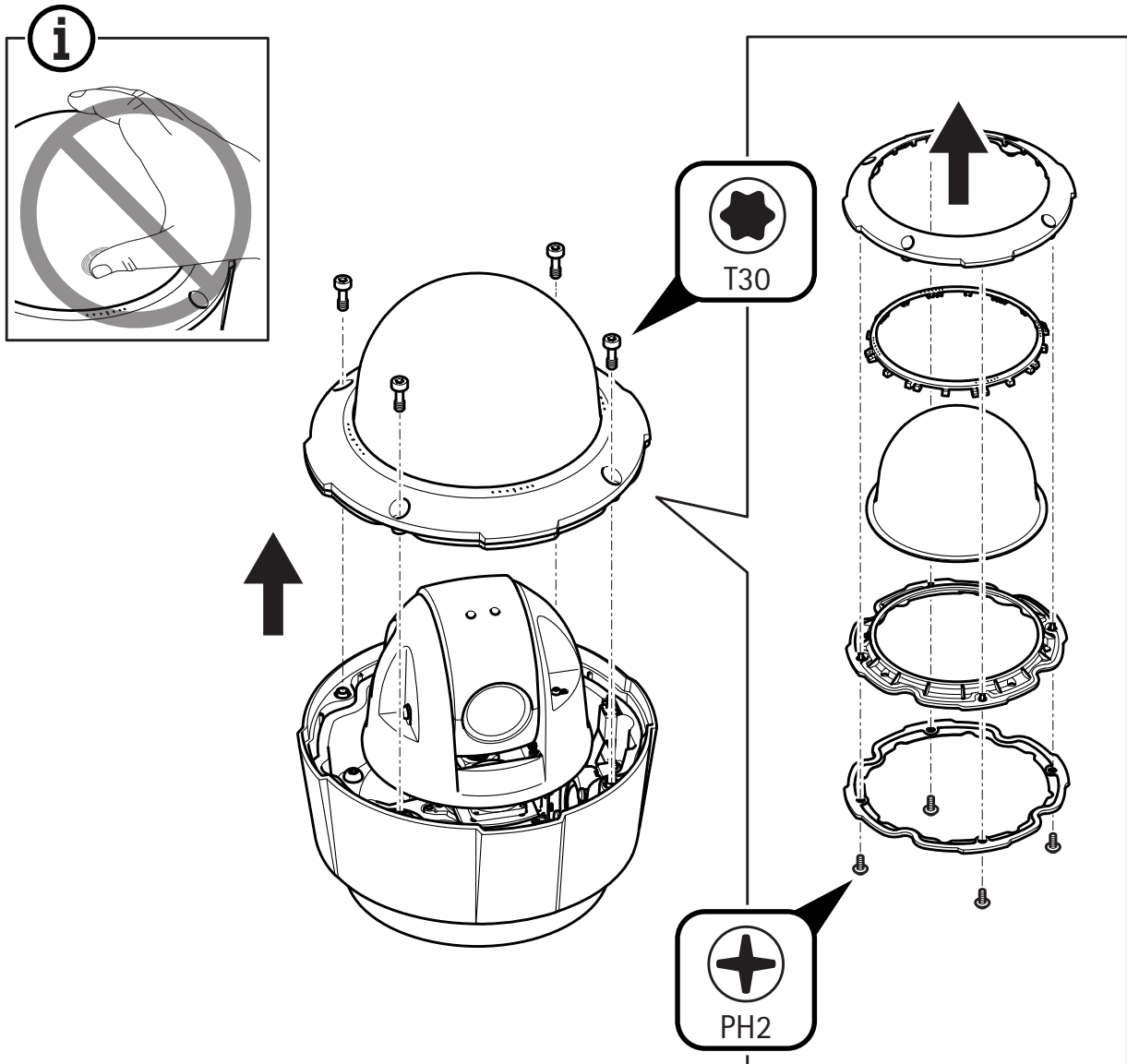
Uncoated stainless steel – No special pretreatment is needed, but make sure that the surface is clean before painting.

Plastic – Use a primer.

AXIS Q60-E Series

Repaint the product

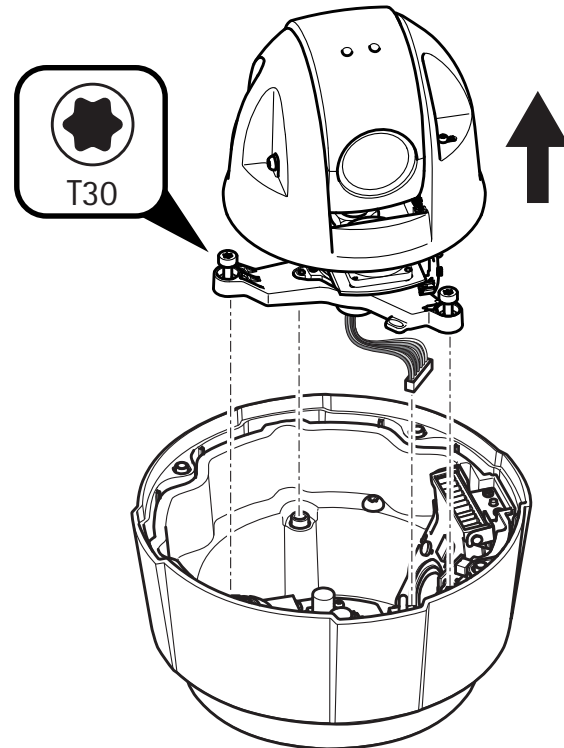
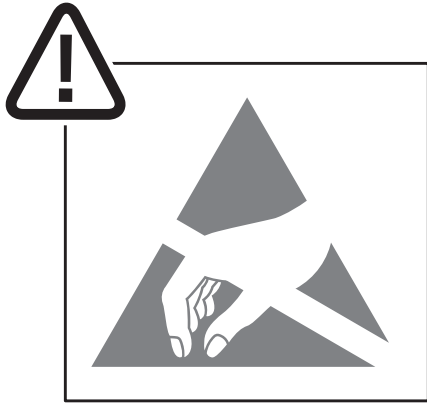
Disassembly



1. Remove the dome module assembly (4 screws).
2. Remove the four screws and separate the dome module bracket, dome with dome module sealing and dome cover ring from each other.

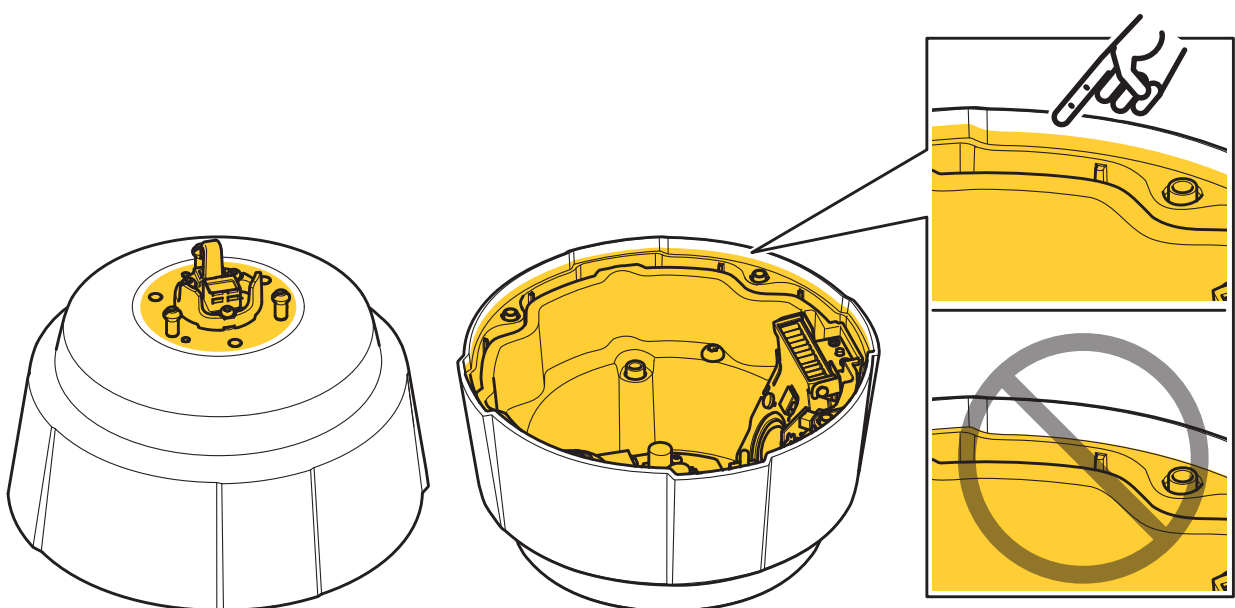
AXIS Q60-E Series

Repaint the product



3. Loosen the unit assembly (3 screws).
4. Lift the unit assembly upwards and remove the connector from the PCB assembly power by pulling the connector upwards.

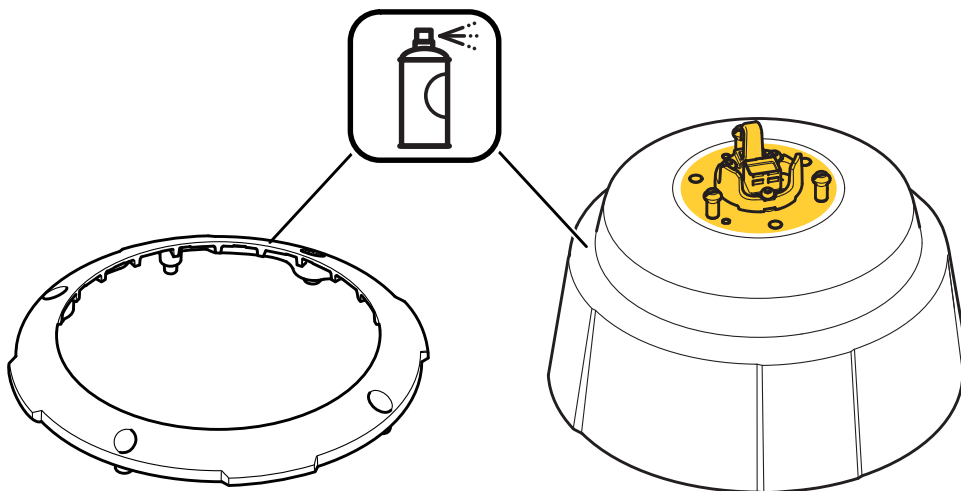
Repainting



AXIS Q60-E Series

Repaint the product

1. Mask the top surface of the chassis. Make sure the push-pull connector housing, chassis hook and bayonet screws are properly masked.
2. Mask the entire opening in the bottom of the chassis. Make sure that the masking line is close to the original paint border so that no paint particles can reach the inside of the camera. Outline drawing of the opening can be found on www.axis.com.
3. Make sure all necessary preparations of the chassis and the dome cover ring have been made. See *Preparations on page 3*.

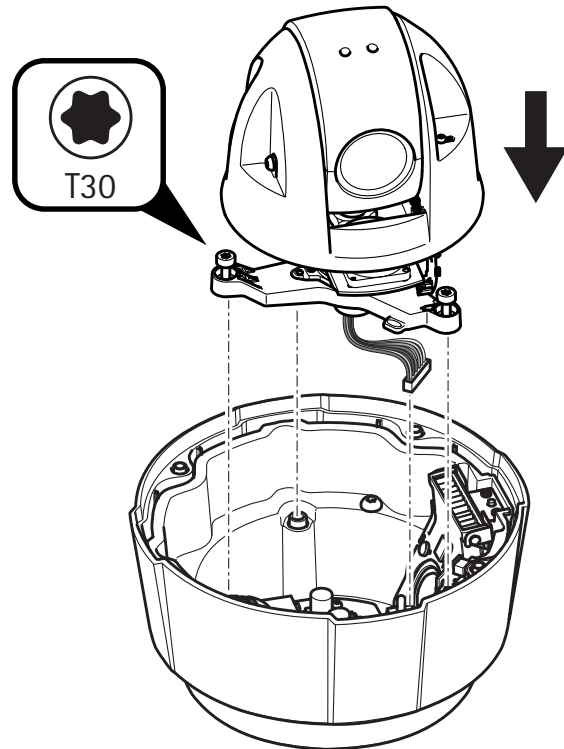
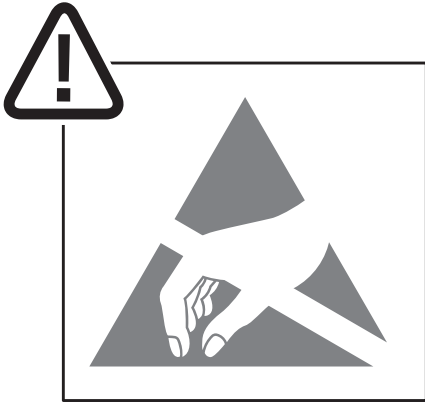


4. Apply a thin and even layer of spray paint according to the instructions of the paint manufacturer.
5. Let the paint dry.
6. To get a better coverage and clearer color, apply a second layer of spray paint.
7. When the paint is dry, remove the masking.

AXIS Q60-E Series

Repaint the product

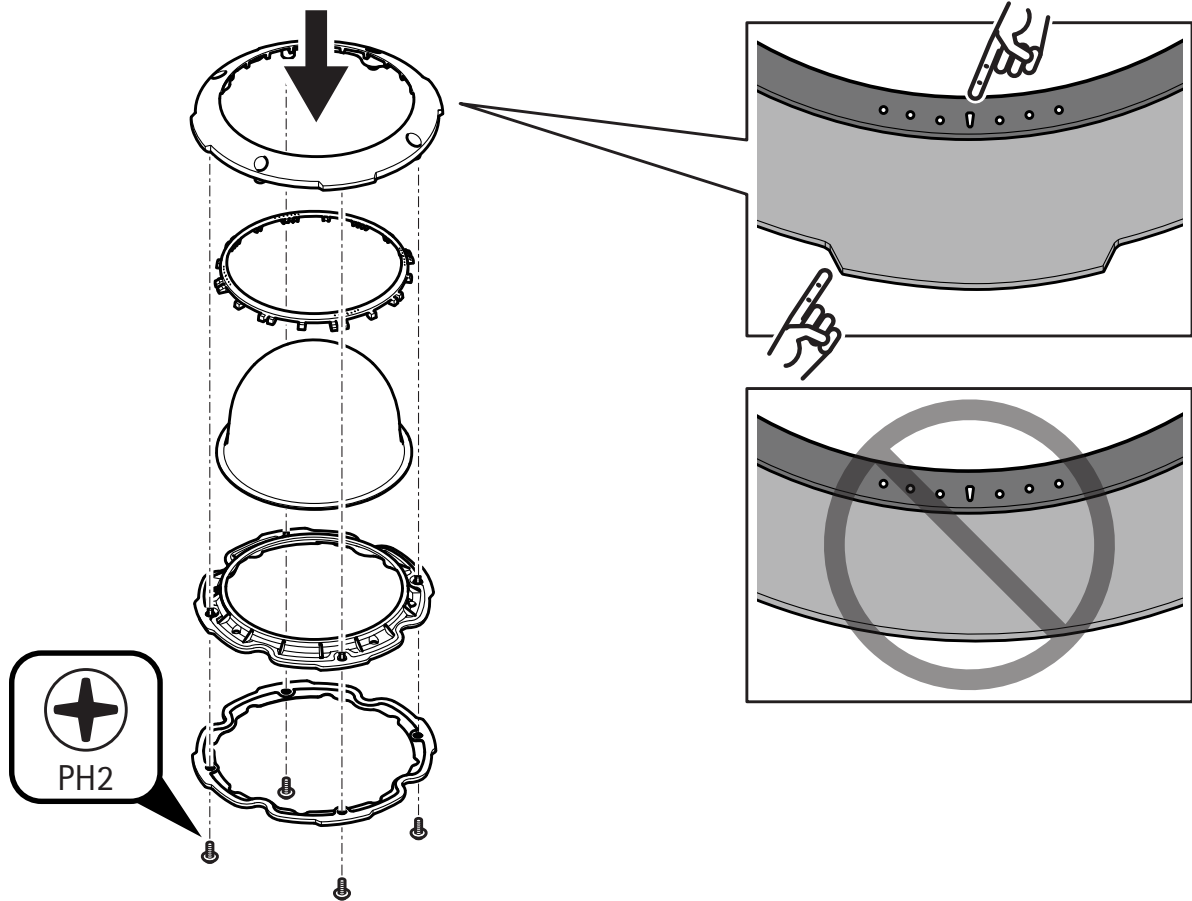
Reassembly



1. Attach the connector to the PCB assembly power.
2. Reassemble the unit assembly (3 screws, 4 N m).

AXIS Q60-E Series

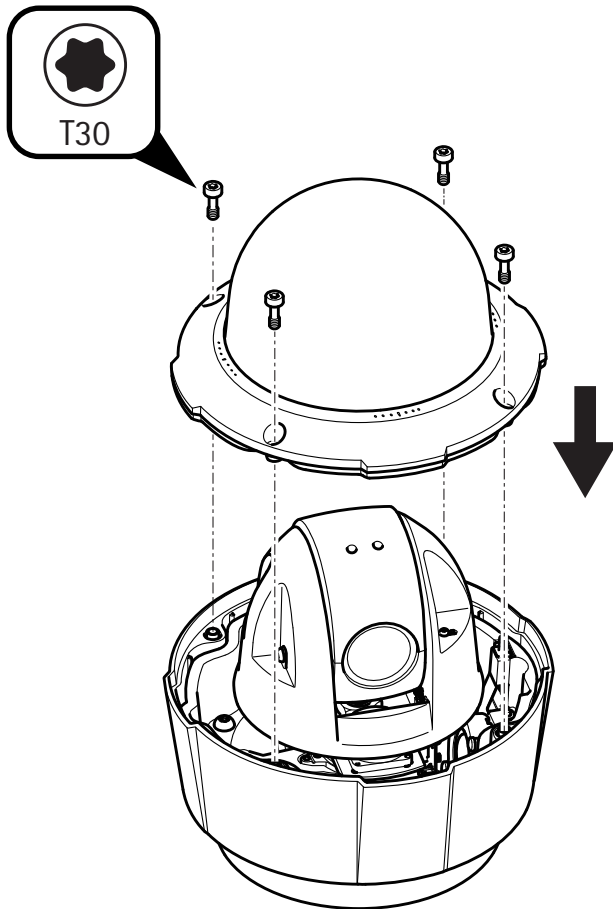
Repaint the product



3. Assemble the dome module bracket, dome with dome module sealing and dome cover ring (4 screws, 1.2 N m).

AXIS Q60-E Series

Repaint the product



4. Reassemble the dome module assembly (4 screws, 4 N m).

