

AXIS W110 Body Worn Camera

Made for a safer workplace

AXIS W110 Body Worn Camera is a lighter, friendlier wearable camera for protecting staff and reducing bad behavior. It brings the benefits of wearable cameras to the workplace in sectors like retail, healthcare, transportation, and more. AXIS W110 Body Worn Camera deters, protects, and documents. Wearers and the public feel they're not alone, which contributes to a sense of well-being and a more peaceful workplace. AXIS W110 Body Worn Camera offers excellent image and audio quality with exceedingly sharp images and clear audio for forensic usability. The system features signed firmware and video, secure key storage, and true end-to-end encryption to ensure video integrity.

- > **Lightweight and compact**
- > **Excellent image quality with electronic image stabilization**
- > **Flexible mounting options**
- > **Voice feedback**
- > **Open standards for easy integration**



AXIS W110 Body Worn Camera

Camera

Image sensor

1/2.8" progressive scan RGB CMOS
Sensitivity: 0.1 lux

Lens

Focal length, 1.9 mm
Horizontal field of view: 140° (1080p), 112° (720p)
Vertical field of view: 91° (1080p), 62° (720p)
Fixed iris, F2.2

Shutter speed

1/22000 s to 1/25 s with 50 Hz
1/22000 s to 1/30 s with 60 Hz

Video

Video compression

H.264 (MPEG-4 Part 10/AVC) High Profile

Resolution

1920x1080, 1280x720

Frame rate

25 fps at 50 Hz
30 fps at 60 Hz

WDR

WDR

Image settings

Electronic image stabilization (720p), barrel distortion correction

Video streaming

Axis Zipstream for body worn

Audio

Audio encoding

AAC-LC

Audio input/output

Built-in microphone, built-in speaker

Functionality

Voice enhancement

Approvals

Supply chain

TAA compliant

EMC

EN 55032 Class B, EN 55035, EN 61000-6-1, EN 61000-6-2
Australia/New Zealand: RCM AS/NZS CISPR 32 Class B
Canada: ICES-3(B)/NMB-3(B)
Japan: VCCI Class B
Korea: KS C 9835, KS C 9832 Class B
USA: FCC Part 15 Subpart B Class B

Safety

CAN/CSA C22.2 No. 62368-1 ed. 3, IEC/EN/UL 62368-1 ed. 3, RCM AS/NZS 62368.1:2018, IS 13252

Environment

IEC 60068-2-1, IEC 60068-2-2, IEC 60068-2-14, IEC 60068-2-27, IEC 60068-2-78, IEC/EN 60529 IP67

Wireless

EN 300328, EN 300440, EN 301893, EN 301489-1, EN 301489-17, FCC Part 15 Subpart C, RSS-247

Cybersecurity

ETSI EN 303 645, BSI IT Security Label

Cybersecurity

Edge security

Software: Signed OS, AES-XTS-Plain64 256bit encryption
Hardware: Secure boot, Axis Edge Vault with Axis device ID, signed video, secure keystore (CC EAL6+ certified hardware protection of cryptographic operations and keys). CJIS compliant encrypted internal storage (AES256)

Network security

IEEE 802.1AR, HTTPS/HSTS¹, TLS v1.2/v1.3¹
WPA/WPA2-PSK

1. This product includes software developed by the OpenSSL Project for use in the OpenSSL Toolkit. (openssl.org), and cryptographic software written by Eric Young (eay@cryptsoft.com).

Documentation

Axis body worn cameras – system security white paper, available at axis.com/learning/white-papers
Axis Vulnerability Management Policy
Axis Security Development Model
AXIS OS Software Bill of Material (SBOM)
To download documents, go to axis.com/support/cybersecurity/resources
To read more about Axis cybersecurity support, go to axis.com/cybersecurity

General

Battery

Li-ion, 1600 mAh
Up to 7 hours operating time in 720p²
Up to 5.5 hours operating time in 1080p²
Up to 11.5 hours in standby mode³

Storage

128 GB non-volatile memory, up to 45 hours of recorded video
AES256 encryption standard

Throughput

Camera to system controller: 100 Mbit/s

Recording

Configurable audio and video prebuffer 0, 15, 30, 60, 90, and 120 seconds
Configurable audio and video postbuffer 0, 10, 30, and 60 seconds

Sensor

6-axis gyroscope, accelerometer

User interface

Status indicators
Audio, voice, and vibration feedback

Wireless interface

Bluetooth® 5.1 Low Energy and Classic
Bluetooth profile: None
Wi-Fi® 5 a/b/g/n/ac @ 2.4 GHz, 5 GHz

Casing

IP54-rated
Plastic casing
Drop tested up to 1.5 m

Color

Black NCS S 9000-N
Gray NCS S 2502-B

Connectors

Pogo pin pads

Operating conditions

Temperature: -20 °C to 45 °C (-4 °F to 113 °F)
Maximum temperature (intermittent, <1 hour): 50 °C (122 °F)
Humidity: 10–100% RH (condensing)

Charging conditions

Temperature: 0 °C to 35 °C (32 °F to 95 °F)
Charging time:
<7.5 hours in 0–15 °C (32–59 °F)
<4 hours in 15–30 °C (59–86 °F)
<6.5 hours in 30–35 °C (86–95 °F)
Humidity: 5–95% RH (non-condensing)

Storage conditions

Temperature:
< 1 month: -20 °C to 45 °C (-4 °F to 113 °F)
< 3 months: -20 °C to 35 °C (-4 °F to 95 °F)
> 3 months: 0 °C to 25 °C (32 °F to 77 °F)
Optimal temperature: 25 °C (77 °F)
Humidity: 5–95% RH (non-condensing)

Dimensions

For the overall product dimensions, see the dimension drawing in this datasheet.

Weight

85 g (0.19 lb)
117 g (0.26 lb) with AXIS TW1106 Magnet Mount

Included accessories

AXIS TW1106 Magnet Mount

Optional accessories

AXIS TW1107 Magnet Mount
Klick Fast™ System for Body worn camera mounts
AXIS Body Worn Assistant app for Android, iOS
For more accessories, see axis.com/bodyworn

2. With pre-buffer, and fewer than 500 charge cycles.

3. Without pre-buffer, and including 1 hour of recording per charge in 720p, and fewer than 500 charge cycles.

Warranty

The product, including the battery, is subject to a 3-year warranty period, in accordance with the terms and conditions stated in Axis 5 Year Limited Hardware Warranty available on axis.com/warranty ("3-year Warranty Period").

In addition to the terms and conditions in the Axis 5 Year Limited Hardware Warranty, the warranty doesn't cover battery degradation if the battery has undergone more than 500 charge cycles, if the camera has been used or stored in temperatures outside the specifications in the datasheet, or if the instructions in the product's user manual haven't been followed.

Replacement of the battery during the 3-year Warranty Period carried out by any other party than Axis (or an RMA partner on behalf of Axis) will void the main item's warranty. Contact Axis Support or your reseller for battery- or service-related matters.

Sustainability

Substance control

PVC free, BFR/CFR free in accordance with JEDEC/ECA Standard JS709

RoHS in accordance with EU RoHS Directive 2011/65/EU/ and EN 63000:2018

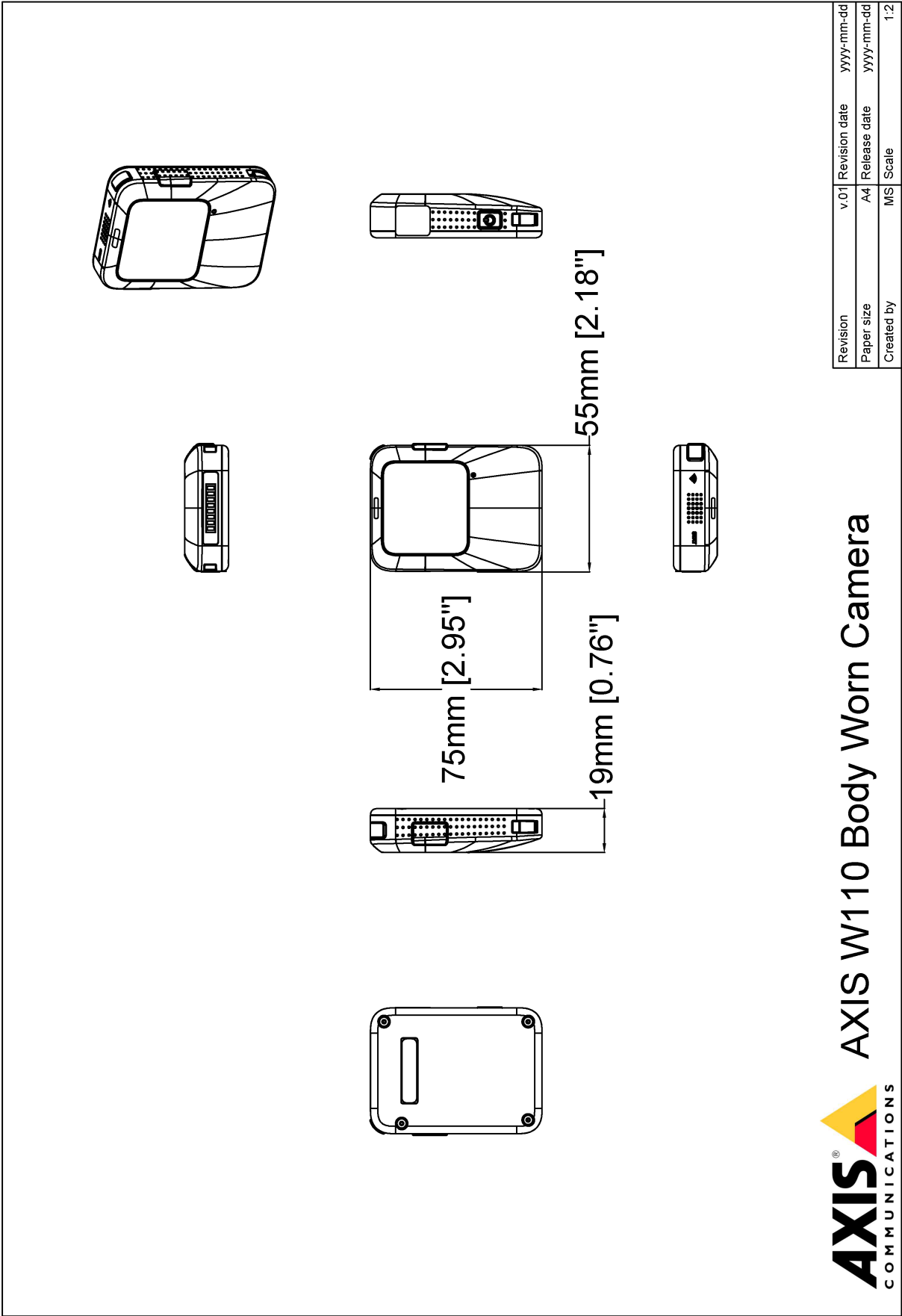
REACH in accordance with (EC) No 1907/2006. For SCIP UUID, see echa.europa.eu

Environmental responsibility

axis.com/environmental-responsibility

Axis Communications is a signatory of the UN Global Compact, read more at unglobalcompact.org

Dimension drawing



AXIS COMMUNICATIONS
AXIS W110 Body Worn Camera

www.axis.com