

AXIS TU9004 Wireless Dongle

Wireless USB dongle for AXIS M1075-L Box Camera

AXIS TU9004 Wireless Dongle allows the camera to communicate with 2.4 GHz and 5 GHz frequency. The wireless adapter supports 802.11ac/b/g/n. A PoE injector is required to power the camera.

> **2.4 GHz and 5 GHz**

> **Supports 802.11ac/b/g/n/a**



AXIS TU9004 Wireless Dongle

Hardware

OEM LM Technologies Ltd., LM808
Chipset: Realtek

Network

Wireless interface Supports 802.11ac/b/g/n/a
Frequency 2.4 GHz and 5 GHz

Approvals

Wireless EN 300328, EN 300440, EN 301489-1, EN 301489-3,
EN 301489-17, EN 301893, EN 50566, EN 62479, EN 62209-2
Argentina: ENACOM
Australia / New Zealand: RCM
Bahamas: URCA
Bahrain: TRA
Brazil: Anatel
Canada: IC
Costa Rica: SUTEL
Curaco: BURTEL
Dominican Republic: INDOTEL
El Salvador: SIGET
Europe: CE
Fiji: TAF
Guatemala: SIT
Honduras: CONATEL
India: WPC
Japan: TELEC
Malaysia: SIRIM
Morocco: ANRT
Qatar: CRA
Panama: ASEP
Pakistan: PTA
Paraguay: CONATEL
Peru: MTC
Saudi Arabia: CITC
Sint Maarten
South Africa: ICASA

South Korea: KC
Taiwan: NCC
Thailand: NBTC
Turkey: BTK
UAE: TRDA
United States: FCC

General

Operating conditions 0 °C to 35 °C (32 °F to 95 °F)

Storage conditions -20 °C to 75 °C (-4 °F to 167 °F)

Dimensions 29.5 x 15 x 8 mm (1.2 x 0.6 x 0.3 in)

Weight 3.3 g ±0.25 g (0.007 lb ±0.0006 lb)

Box content Wireless adapter

Warranty 3-year warranty, see axis.com/warranty

Export control This product is subject to export control regulations, and you should always comply with all applicable national and international export or re-export control regulations.

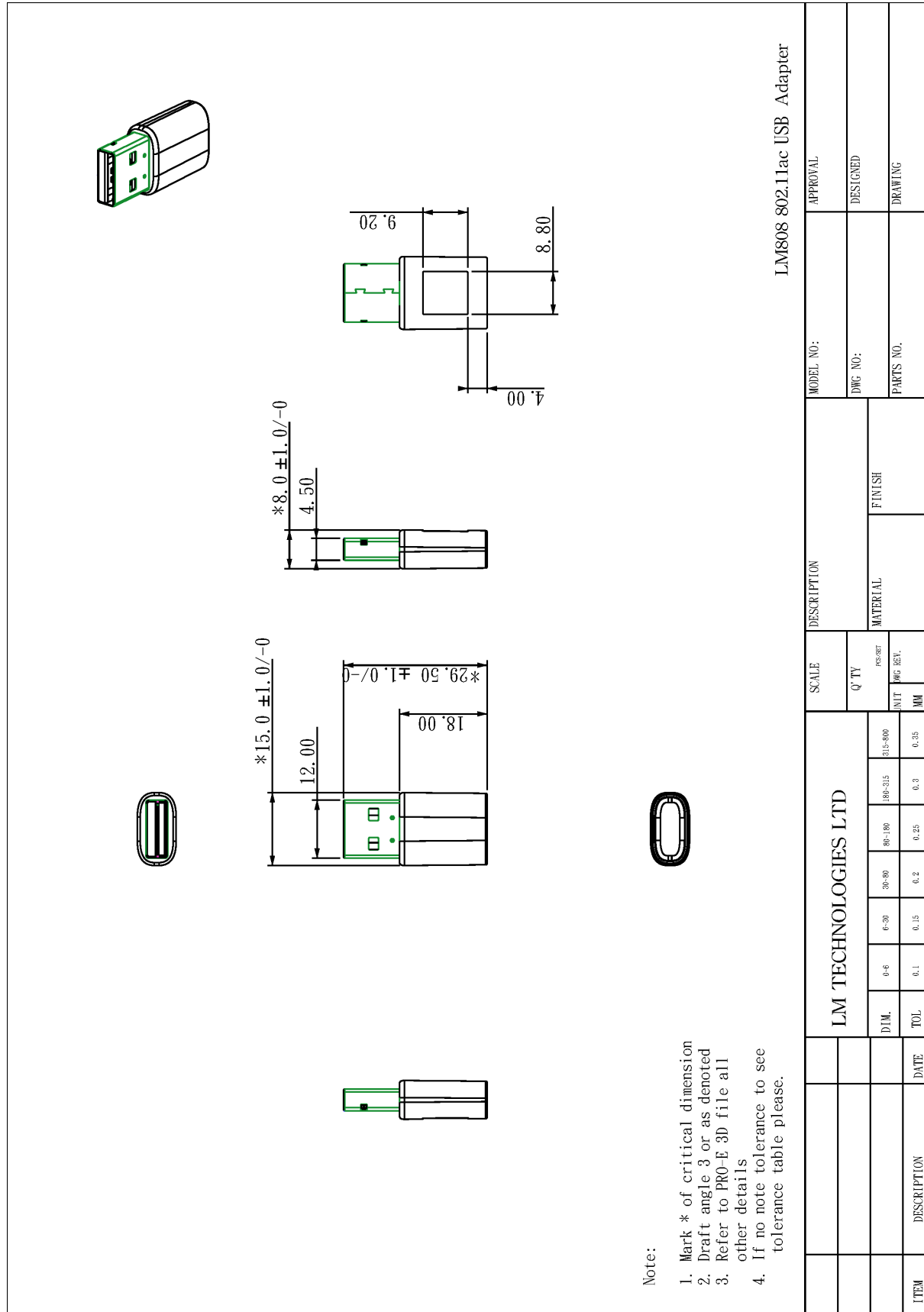
Sustainability

Substance control PVC free, BFR/CFR free in accordance with JEDEC/ECA Standard JS709
RoHS in accordance with EU RoHS Directive 2011/65/EU/ and EN 63000:2018
REACH in accordance with (EC) No 1907/2006. For SCIP UUID, see axis.com/partner.

Materials To read more about sustainability at Axis, go to axis.com/about-axis/sustainability

Environmental responsibility axis.com/environmental-responsibility
Axis Communications is a signatory of the UN Global Compact, read more at unglobalcompact.org

Dimension drawing



Note:

1. Mark * of critical dimension
2. Draft angle 3 or as denoted
3. Refer to PRO-E 3D file all other details
4. If no note tolerance to see tolerance table please.