

AXIS S3016 Recorder

16-channel recorder with powerful PoE switch

AXIS S3016 Recorder is a 1U rack recorder with an integrated PoE switch for up to 16 devices and a maximum of PoE class 4 per port. It provides reliable recording thanks to the four surveillance-grade hard drives and different RAID levels. This high-performance recorder offers a gigabit switch for connecting network devices and a 2.5 gigabit uplink for video recordings in ultra-high definition and includes a 5-year warranty. The recorder can be used in single-site, multi-site systems and for expanding storage and network in existing systems. It is compatible with both AXIS Camera Station Edge and AXIS Camera Station Pro installations.

- > **Rack recorder with integrated PoE switch**
- > **Easy to install and operate**
- > **Surveillance-grade hard drives**
- > **USB port for exporting video**
- > **5-year warranty**



AXIS S3016 Recorder

Variants

AXIS S3016 Recorder 8 TB
AXIS S3016 Recorder 16 TB
AXIS S3016 Recorder 32 TB

Hardware

Processor

i.MX 8QuadMax

Storage

Hot swappable Surveillance Class HDD
Total HDD slots: 4
Free HDD slots: 0
8 TB
Out-of-the-box storage: 6 TB after RAID 5
Out-of-the-box capacity without RAID: 8 TB (4x2 TB)
16 TB
Out-of-the-box storage: 12 TB after RAID 5
Out-of-the-box capacity without RAID: 16 TB (4x4 TB)
32 TB
Out-of-the-box storage: 24 TB after RAID 5
Out-of-the-box capacity without RAID: 32 TB (4x8 TB)

RAID

Factory RAID level: 5
Supported RAID levels: 0, 1, 5, 6, 10

Switch

16 ports integrated, 305 W total power budget
Power over Ethernet (PoE) IEEE 802.3at Class 4

Power

Max 650 W, 305 W PoE dedicated
100–240 V AC, 50–60 Hz

Power consumption

(Excluding power consumption from connected devices)
Typical power consumption
8 TB: 31 W
16 TB: 34 W
32 TB: 44 W
Maximum power consumption
8 TB: 37 W
16 TB: 41 W
32 TB: 49 W

Connectors

Front side:

1x USB 3.0

Rear side:

16x PoE RJ45 1 Gbps
1x AUX RJ45 2.5 Gbps
1x LAN RJ45 2.5 Gbps
1x LAN SFP 1 Gbps
1x USB 2.0
1x power connector

Video

Recording

Qualified for recording up to 16 video sources with a total recording rate up to 256 Mbit/s

Video compression

H.264 (MPEG-4 Part 10/AVC), H.265 (MPEG-H Part 2/HEVC)
Depending on camera support

Resolution

Supports all camera resolutions

Frame rate

Supports all camera frame rates

Audio

Audio streaming

One-way audio recording depending on camera support

Audio encoding

AAC
Depending on camera support

Network

Network protocols

IPv4, IPv6 USGv6, ICMPv4/ICMPv6, HTTP, HTTPS¹, HTTP/2, TLS¹, SFTP, SMTP, mDNS (Bonjour), UPnP®, SNMP v1/v2c/v3 (MIB-II), DNS/DNSv6, NTP, NTS, RTSP, TCP, UDP, IGMPv1/v2/v3, ICMP, DHCPv4/v6, ARP, SSH, LLDP, IEEE 802.1X (EAP-TLS), IEEE 802.1AR

1. This product includes software developed by the OpenSSL Project for use in the OpenSSL Toolkit. (openssl.org), and cryptographic software written by Eric Young (eay@cryptsoft.com).

System integration

Application Programming Interface

Open API for software integration, including VAPIX® and AXIS Camera Application Platform (ACAP); specifications at axis.com/developer-community.
One-click cloud connection

Video management systems

Compatible with AXIS Camera Station Edge, AXIS Camera Station Pro, AXIS Camera Station 5, and video management software from Axis' partners available at axis.com/vms.

Event triggers

Hard drive error, hard drive temperature warning, CPU temperature warning, fan error, PoE budget exceeded, RAID warning

Approvals

Product markings

UL/cUL, BIS, CE, VCCI, NOM, RCM, BSMI

Supply chain

TAA compliant

EMC

EN 55035, EN 55032 Class A, EN 61000-3-2, EN 61000-3-3, EN 61000-6-1, EN 61000-6-2
Australia/New Zealand: RCM AS/NZS CISPR 32 Class A
Canada: ICES-3(A)/NMB-3(A)
Japan: VCCI Class A
USA: FCC Part 15 Subpart B Class A
Taiwan: CNS 15936

Safety

CAN/CSA C22.2 No. 62368-1, IEC/EN/UL 62368-1 ed. 3, RCM AS/NZS 62368.1:2018, IS 13252, BSMI-mark, NOM-019

Environment

IEC 60068-2-1, IEC 60068-2-2, IEC 60068-2-6, IEC 60068-2-14, IEC 60068-2-27, IEC 60068-2-78, IEC/EN 60529 IP20

Network

NIST SP500-267

Cybersecurity

ETSI EN 303 645, BSI IT Security Label, FIPS 140

Cybersecurity

Edge security

Software: Signed OS, digest authentication, password protection, Axis Cryptographic Module (FIPS 140-2 level 1)

Hardware: Axis Edge Vault cybersecurity platform TPM 2.0 (CC EAL4+, FIPS 140-2 Level 2), secure element (CC EAL 6+), system-on-chip security (TEE), Axis device ID, secure keystore, secure boot, encrypted filesystem (AES-XTS-Plain64 256bit)

Network security

IEEE 802.1X (EAP-TLS)², IEEE 802.1AR, HTTPS/HSTS², TLS v1.2/v1.3², Network Time Security (NTS), X.509 Certificate PKI

Documentation

AXIS OS Hardening Guide

Axis Vulnerability Management Policy

Axis Security Development Model

To download documents, go to axis.com/support/cybersecurity/resources

To read more about Axis cybersecurity support, go to axis.com/cybersecurity

General

Supported devices

Axis devices with firmware 5.50 or later
AXIS Companion mini cameras and third-party cameras are not supported

Casing

Steel casing

Color: black NCS S 9000-N

Form factor

Rack 1U

Compatible with EIA-310 racks

Operating conditions

Temperature: 0 °C to 45 °C (32 °F to 113 °F)

Humidity: 10–85% RH (non-condensing)

Storage conditions

Temperature: -20 °C to 65 °C (-4 °F to 149 °F)

Humidity: 5–90% RH (non-condensing)

2. This product includes software developed by the OpenSSL Project for use in the OpenSSL Toolkit. (openssl.org), and cryptographic software written by Eric Young (ey@cryptsoft.com).

Dimensions

484 x 402 x 44.1 mm (19.1 x 15.8 x 1.7 in)

Minimum rail depth³: 398 mm (15.7 in)

Product installation depth⁴: 377 mm (14.8 in)

Rail adjustability range⁵: 376–499 mm (14.8–19.6 in)

Weight

8 TB: 10.24 kg (22.6 lb)

16 TB: 10.08 kg (22.2 lb)

32 TB: 10.68 kg (23.5 lb)

Box content

Recorder, rack rails, front cover, rubber feet, installation guide, power cord, screws

Optional accessories

AXIS TS3901 Rail Extensions

For more accessories, go to axis.com/products/axis-s3016

System tools

AXIS Site Designer, AXIS Device Manager, product selector, accessory selector

Available at axis.com

Languages

English, German, French, Spanish, Italian, Russian, Simplified Chinese, Japanese, Korean, Portuguese, Polish, Traditional Chinese, Dutch, Czech, Swedish, Finnish, Turkish, Thai, Vietnamese

Warranty

5-year warranty, see axis.com/warranty

Part numbers

Available at axis.com/products/axis-s3016#part-numbers

Sustainability

Substance control

PVC free

RoHS in accordance with EU RoHS Directive 2011/65/EU/ and EN 63000:2018

REACH in accordance with (EC) No 1907/2006. For SCIP UUID, see echa.europa.eu

Materials

Renewable carbon-based plastic content: 63% (recycled)

Screened for conflict minerals in accordance with OECD guidelines

To read more about sustainability at Axis, go to axis.com/about-axis/sustainability

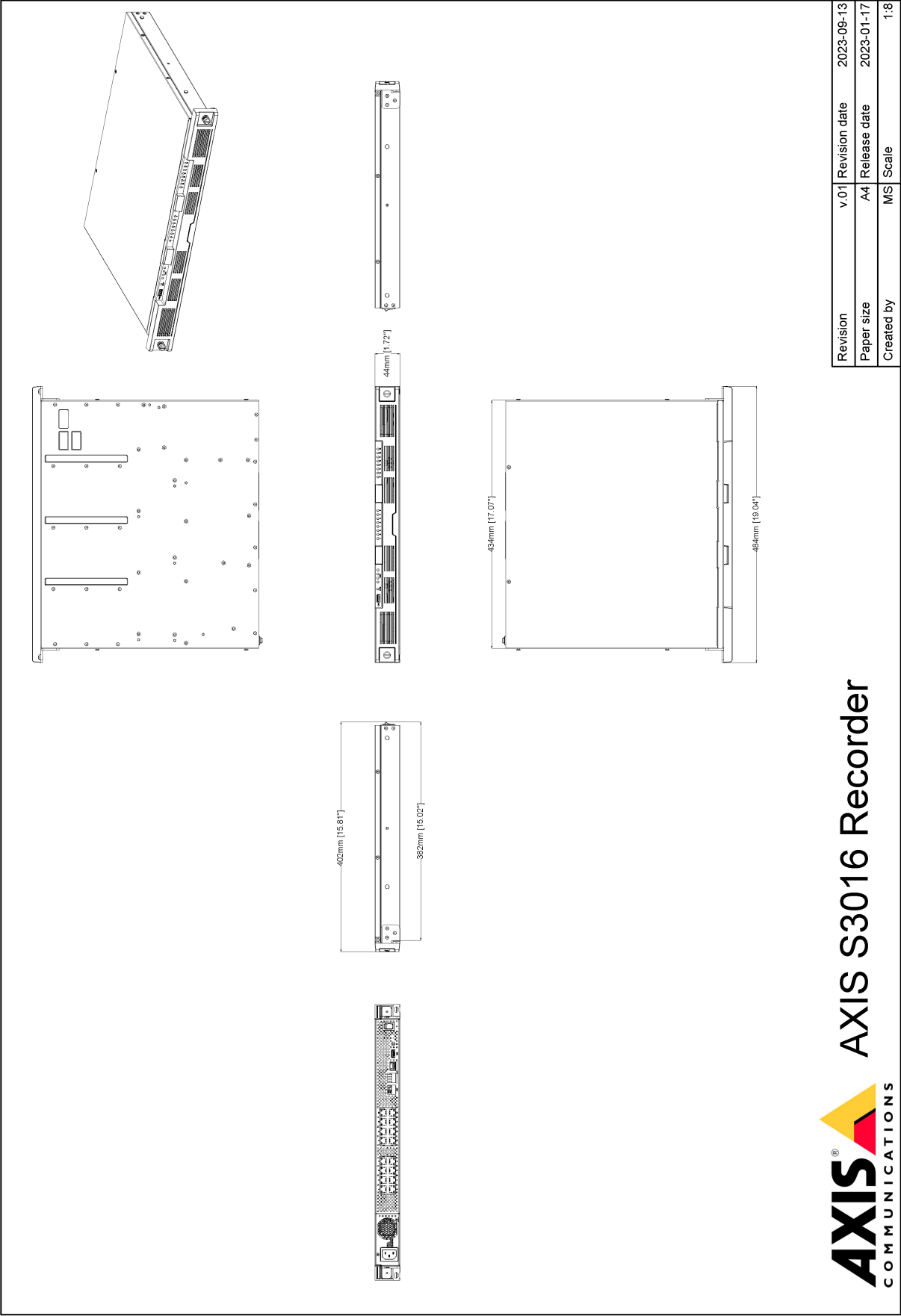
Environmental responsibility

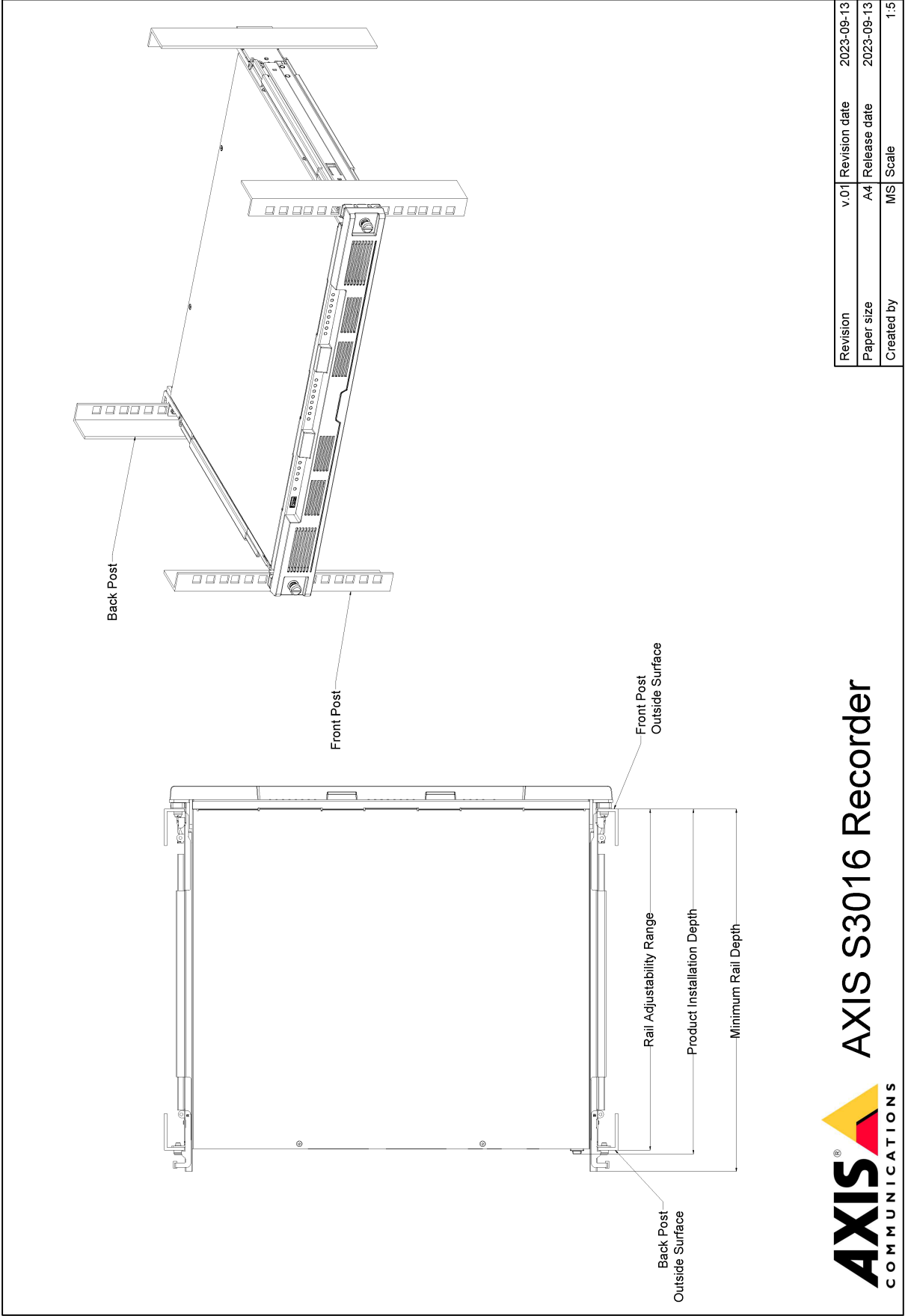
axis.com/environmental-responsibility

Axis Communications is a signatory of the UN Global Compact, read more at unglobalcompact.org

3. Measured from the outside-facing surface of the front rack post until the end of the rail.
4. Measured from the outside-facing surface of the front rack post to the back of the product.
5. The allowable distance between the outside-facing surface of the front and rear rack posts.

Dimension drawing





Highlighted capabilities

Axis Edge Vault

Axis Edge Vault is the hardware-based cybersecurity platform that safeguards the Axis device. It forms the foundation that all secure operations depend on and offer features to protect the device's identity, safeguard its integrity and protect sensitive information from unauthorized access. For instance, **secure boot** ensures that a device can boot only with **signed OS**, which prevents physical supply chain tampering. With signed OS, the device is also able to validate new device software before accepting to install it. And the **secure keystore** is the critical building-block for protecting cryptographic information used for secure communication (IEEE 802.1X, HTTPS, Axis device ID, access control keys etc.) against malicious extraction in the event of a security breach. The secure keystore and secure connections are provided through a Common Criteria or FIPS 140 certified hardware-based cryptographic computing module.

To read more about Axis Edge Vault, go to axis.com/solutions/edge-vault.

For more information, see axis.com/glossary