

AXIS F7225-RE Pinhole Sensor

Extremely discreet pinhole sensor

Ideal for integration in tight spaces such as machines or ATMs, this extremely discreet sensor is designed for use with AXIS F91 main units to ensure lower installation and configuration costs. It supports four HDTV 1080p video streams at 30 fps or 720p video streams at up to 60 fps. When used with AXIS F9111 Mk II main unit, it delivers HDTV 1080p video streams at 60 fps or 720p video streams at up to 180 fps. This IP66-/IP67-rated sensor supports a wide temperature range. Furthermore, it offers a 92° field of view for wide area coverage.

- > **Extremely discreet design**
- > **Up to 60 fps at 1080p**
- > **Up to 180 fps at 720p**
- > **92° horizontal field of view**
- > **Forensic WDR**



AXIS F7225-RE Pinhole Sensor

Camera

Image sensor

1/2.8" (effective) progressive scan RGB CMOS

Lens

3.7 mm, F2.5

With AXIS F91 Main Unit

For 1080p:

Horizontal field of view: 92°

Vertical field of view: 45°

For 720p:

Horizontal field of view: 58°

Vertical field of view: 31°

Fixed iris

Minimum illumination

Color: 0.3 lux at 50 IRE, F2.5

Day and night

Fixed IR-cut filter

Frame rate

Up to 60/50 fps (60/50 Hz) in 1080p and up to 180/175 fps (60/50 Hz) in 720p¹

Resolution

Maximum 1920x1080 HDTV 1080p

General

Casing

IP66/67-rated aluminum front casing and plastic rear cover

Sustainability

PVC and BFR/CFR free

Power

Typical 0.9 W, max 1.9 W

Connectors

SMA connector

Operating conditions

-30 °C to 55 °C (-22 °F to 131 °F)

Humidity 10-100% RH (condensing)

Storage conditions

-40 °C to 65 °C (-40 °F to 149 °F)

Humidity 5-95% RH (non-condensing)

Approvals

EMC

ECE R10 rev.06, EN 50498, EN 55035,

EN 55032 Class B, EN 50121-4, EN 50121-3-2,

EN 61000-6-1, EN 61000-6-2,

FCC Part 15 Subpart B Class B, ICES-3(B)/NMB-3(B),

IEC 62236-4, KS C 9835, KS C 9832 Class B,

VCCI Class B

Safety

EN 45545-2, CAN/CSA C22.2 No. 62368-1 ed. 3,

IEC/EN/UL 62368-1 ed. 3, NFPA 130, UN ECE R118

Environment

EN 50155:2017 Class OT2/ST2, IEC 60068-2-1,

IEC 60068-2-1, IEC 60068-2-27, IEC 60068-2-64,

IEC 60721-3-5 Class 5M3,

IEC/EN 61373 Category 1 Class B, IEC 60529 IP66,

IEC 60529 IP67, NEMA 250 Type 4X

Dimensions

45 x 25 x 20 mm (1.8 x 0.98 x 0.79 in)

Weight

26 g (0.06 lb)

Required hardware

AXIS TU6004-E Cable, AXIS TU6005 Plenum Cable,

AXIS F91 Main Unit

Included accessories

Installation Guide, AXIS F8202 Straight Mounting Bracket

Warranty

5-year warranty, see axis.com/warranty

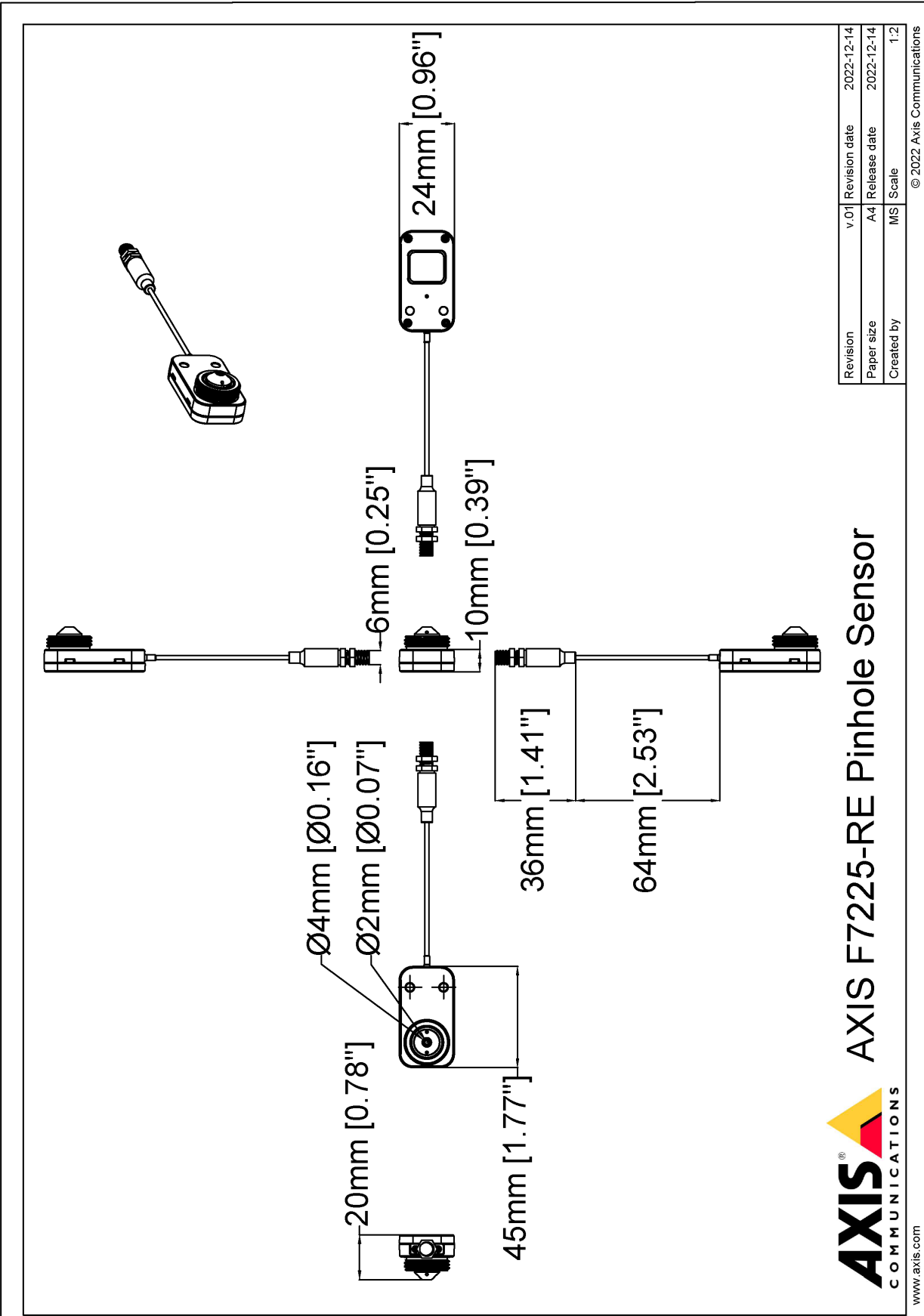
1. For sensor units and main units capture mode specifications, see capture mode table.

Capture mode

Capture mode includes frame rate and shutter speed for the sensor unit in combination with different main units.

Main unit	Resolution	Exposure	Frame rate (fps) (60/50Hz)	Shutter speed (seconds)
AXIS F9111	1080p: 1920x1080	Without WDR	60/50	1/27000 to 1 s
		WDR	30/25	1/20000 to 1.5 s
	720p: 1280x720 ²	Without WDR	180/175	1/32500 to 1/2 s
AXIS F9111-R Mk II	1080p: 1920x1080	Without WDR	60/50	1/43500 to 1 s
		WDR	30/25	1/20000 to 1.5 s
	720p: 1280x720 ²	Without WDR	180/175	1/32500 to 1/2 s
AXIS F9114, AXIS F9114-B, AXIS F9104-B, AXIS F9114-R Mk II, AXIS F9114-B Mk II, AXIS F9104-B Mk II	1080p: 1920x1080	Without WDR	30/25	1/20000 s to 1 s
		WDR	30/25	1/20000 s to 1 s
	720p: 1280x720 ²	Without WDR	60/50	1/32500 to 1/2 s

2. No WDR support. To get WDR, use 1080p: 1920x1080 and scale down.



AXIS F7225-RE Pinhole Sensor



www.axis.com