

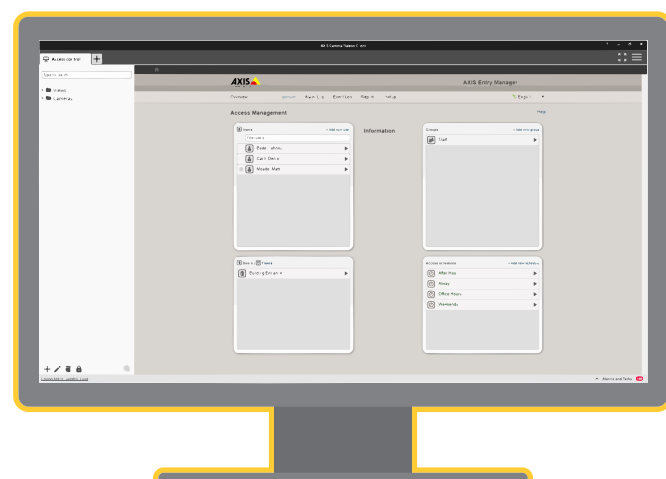


Which access control management software is right for you?

AXIS Camera Station Secure Entry and AXIS Entry Manager are two end-to-end access control management software options ready to meet your needs. But which one should you choose?

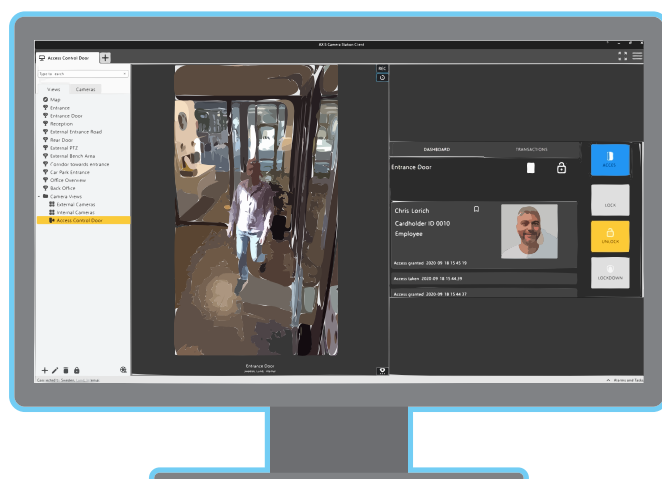
Let's compare.

What is it?



AXIS Entry Manager

A standalone access control system with basic integration to video management systems, including AXIS Camera Station.

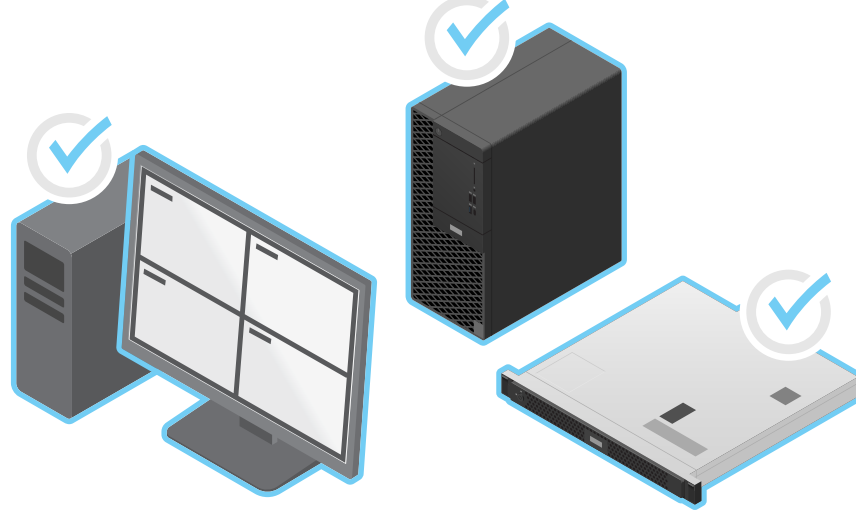


AXIS Camera Station Secure Entry

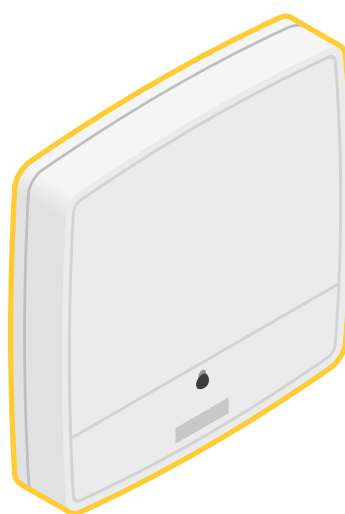
Unified access control and video surveillance in one software, an all-in-one solution.



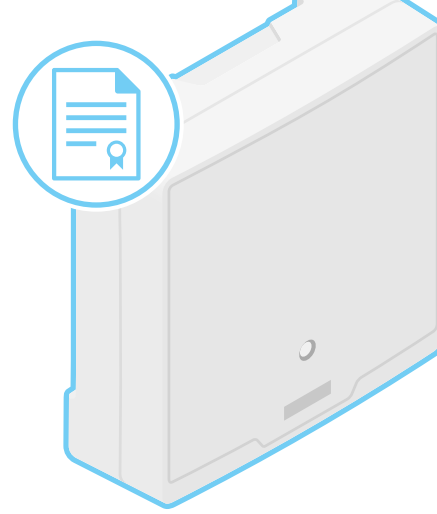
AXIS Entry Manager is pre-loaded on AXIS A1001 Network Door Controller. No separate server needed.



Included in AXIS Camera Station stand-alone licenses. Pre-loaded on AXIS S11 and AXIS S22 Network Video Recorders.

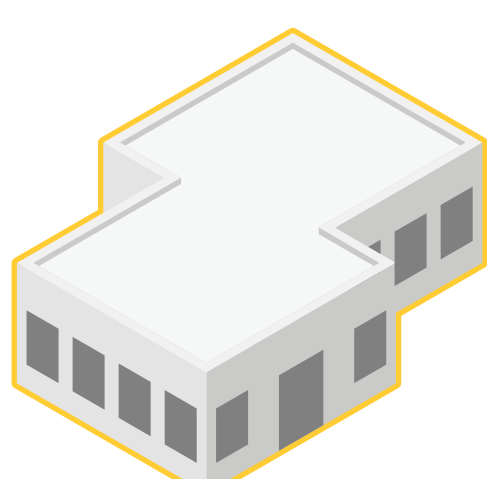


AXIS A1001 Network Door Controller
AXIS Entry Manager is included for free on controller.

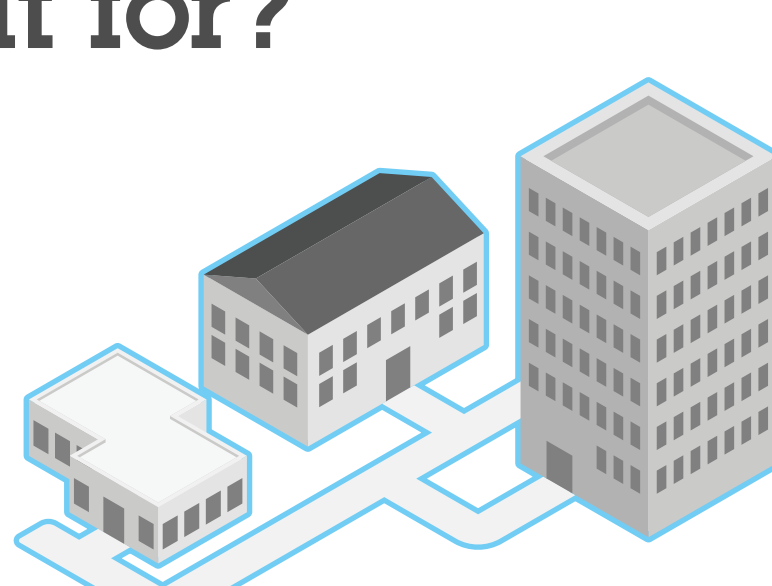


AXIS A1601 Network Door Controller
Requires one AXIS Camera Station license per controller.

Who's it for?



For small size system only
Limited scalability and functionality.

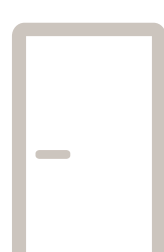


For larger systems
Good scalability and advanced features.

System size

Qualified number of doors:

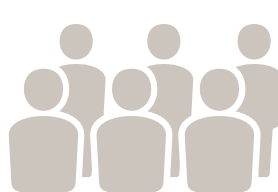
Optimized for 10 doors



Up to 128 doors per server

Qualified number of cardholders:

400 cardholders



10,000 cardholders

Maximum credentials per cardholder:

1 credential



5 credentials

Access control features

AXIS Entry Manager

AXIS Camera Station Secure Entry

Alarm management

Yes, limited



Yes

Cardholder video verification

No



Yes

Graphical maps

No



Yes

Zone management

No



Yes

First person in

No



Yes

Lockdown

No



Yes

Duress PIN

No



Yes