

FTP Server in the NetWare 4.11

Introduction

This document describes how to set up and configure the FTP server in Novell NetWare 4.11 (IntraNetWare) to use with the AXIS 700 s scan-to-file feature.

- Installing the FTP server
- Defining the file destinations

Any comments or suggestions regarding this document can be sent to products@axis.com

Axis Communications AB (<http://www.axis.com/>)

November 23rd, 1998

Table of Contents

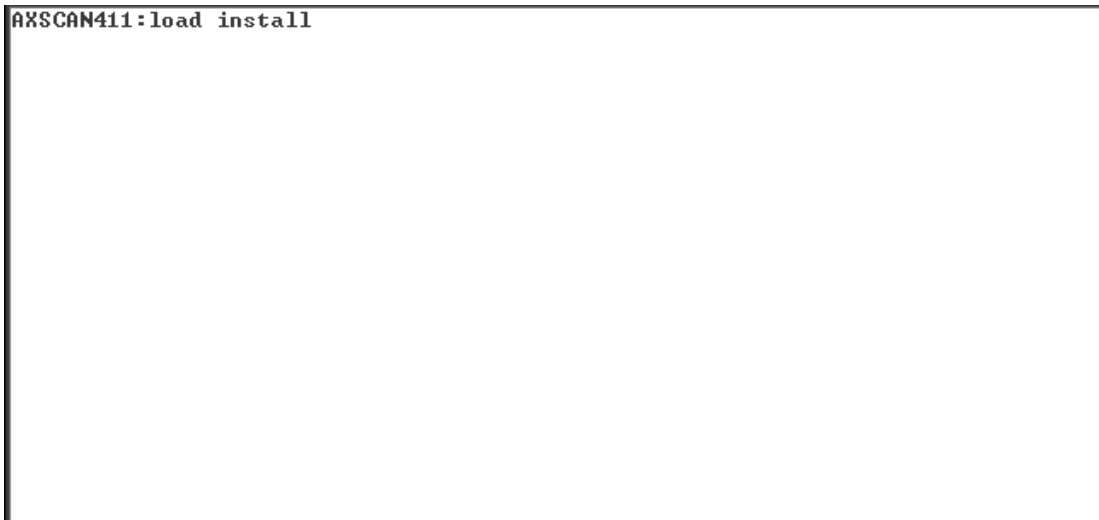
Introduction.....	1
Installing FTP server in the NetWare 4.11.....	3
Configuring the NetWare FTP server.....	5
Defining File Destinations.....	7

Installing FTP server in the NetWare 4.11

Before you begin with the installation of the FTP server you should install and configure NetWare IP. To be able to run an FTP server in the NetWare 4.11 you have to install NetWare UNIX Print Services. To install these services do the following:

1. At the NetWare server console prompt type: **load install** and press Enter. This starts the NetWare Server Installation s program.

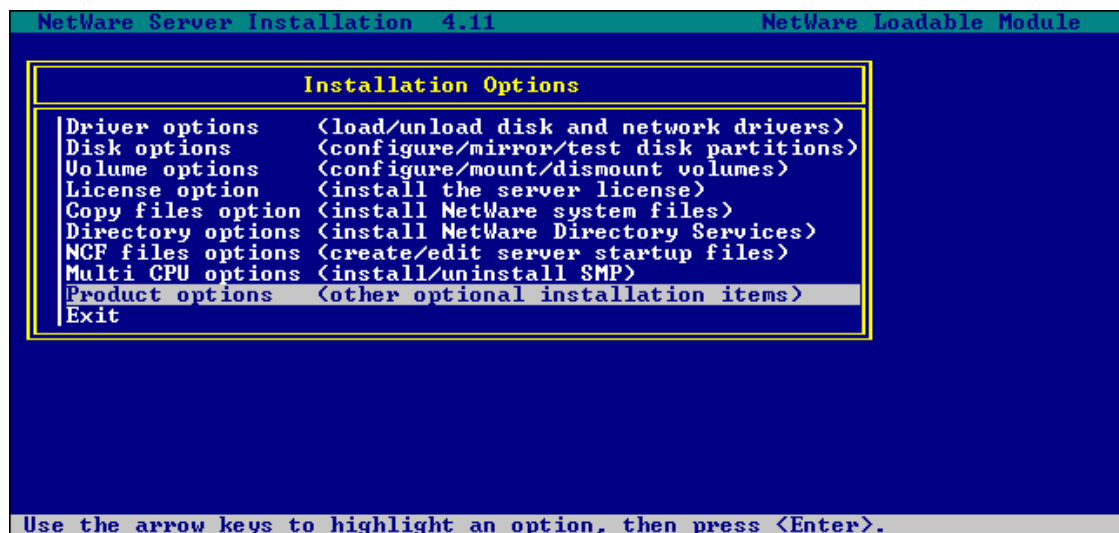
```
AXSCAN411:load install
```



2. Select **Product Options** and press Enter. Select **Install a product not listed** in the next menu.

```
NetWare Server Installation 4.11 NetWare Loadable Module
Installation Options
Driver options      <load/unload disk and network drivers>
Disk options       <configure/mirror/test disk partitions>
Volume options     <configure/mount/dismount volumes>
License option     <install the server license>
Copy files option  <install NetWare system files>
Directory options  <install NetWare Directory Services>
NCF files options  <create/edit server startup files>
Multi CPU options  <install/uninstall SMP>
Product options    <other optional installation items>
Exit
```

Use the arrow keys to highlight an option, then press <Enter>.



3. Insert the CD containing the NetWare FTP server (NetWare UNIX Print Services) into the CD-ROM drive.

```
NetWare Server Installation 4.11                               NetWare Loadable Module

----- Other Installation Items/Products -----
| Create Client Installation Directories on Server
| Make diskettes
| Install NetWare IP
| Install NetWare DHCP
| Configure Network Protocols
| Install Legacy NWADMIN Utility
| Install NetWare WEB Server v2.51
| Upgrade 3.1x Print Services
| ▾ Install an Additional Server Language

----- Other Installation Actions -----
| Choose an item or product listed above
| Install a product not listed
| View/Configure/Remove installed products
| Return to the previous menu

Help <F1>  Previous screen <Esc>  Change Lists <Tab>  Abort <Alt><F10>
```

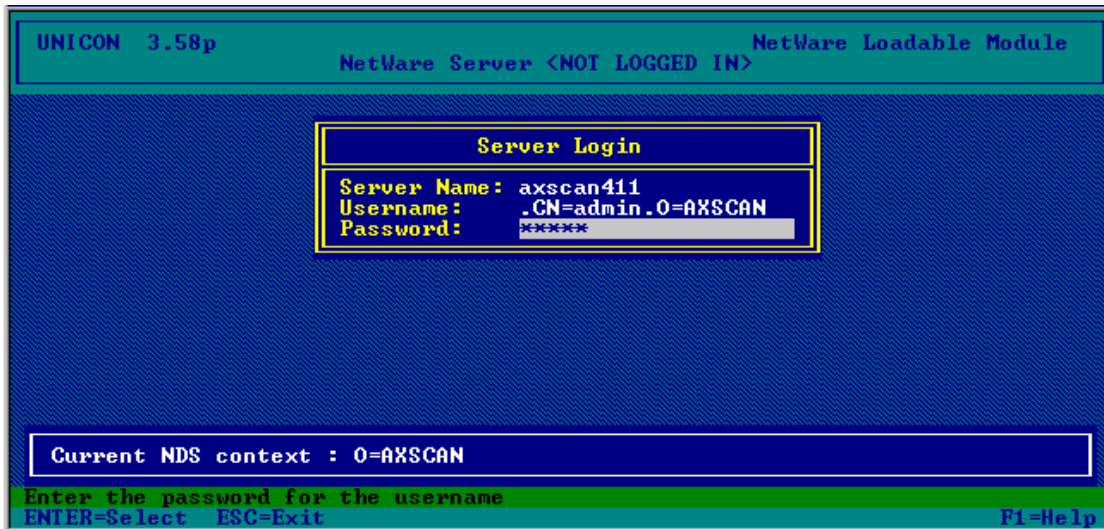
4. Press Enter and specify the path for the software.
5. Follow the instructions to complete the installation.

Note: In order to complete the installation, you may restart the NetWare server.

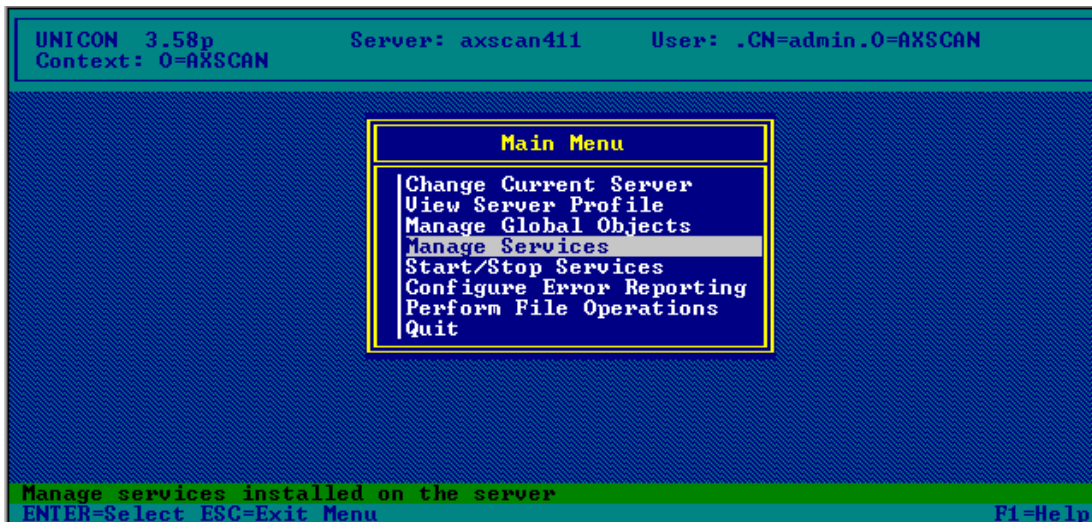
Configuring the NetWare FTP server

When the FTP server installation is completed, it is possible to configure the server and specify directories you want to access via FTP. To configure the FTP services you have to run the UNICON utility. Follow these steps:

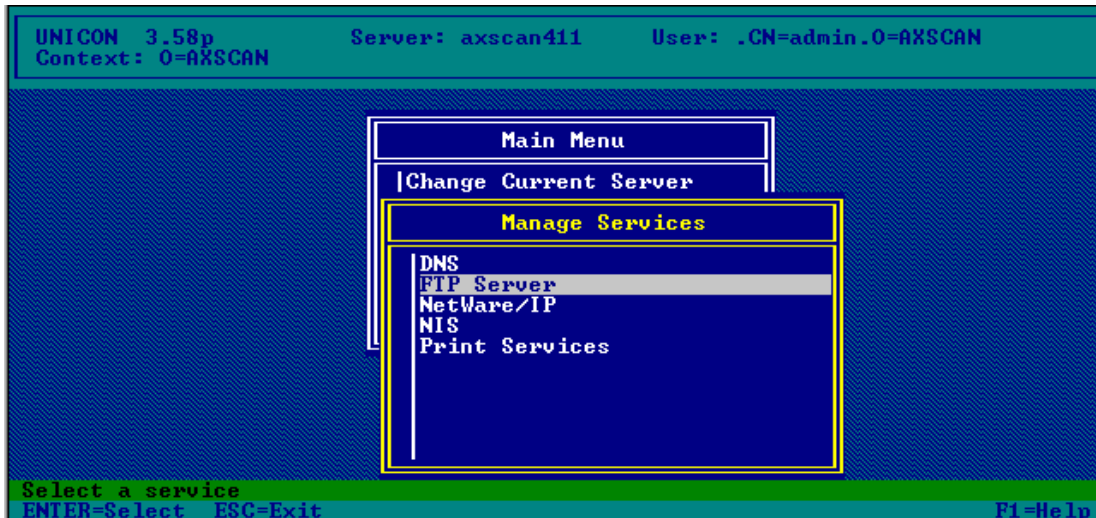
1. At the NetWare server console prompt type: **load unicon** and press Enter. This starts the UNICON utility. Enter your user name and password.



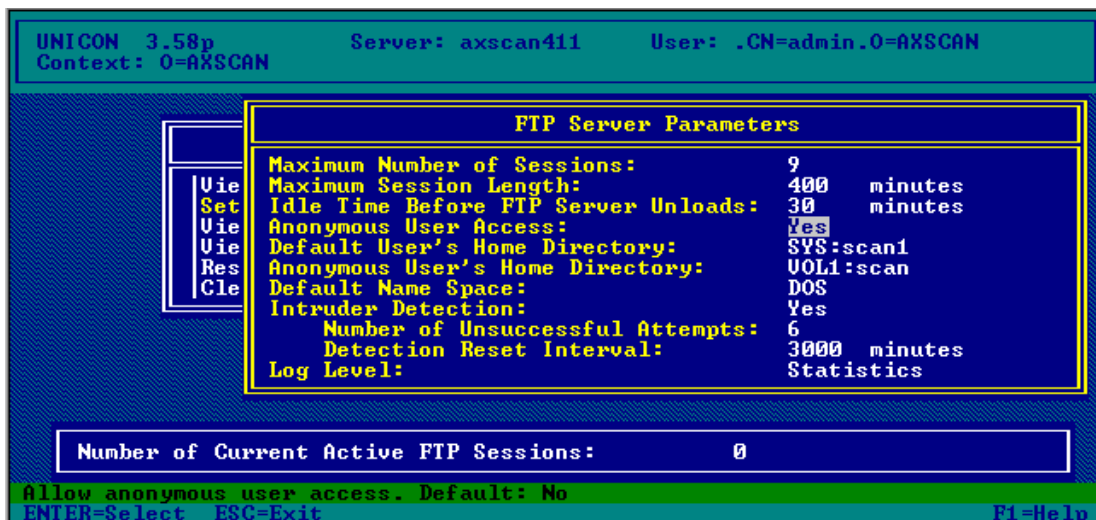
2. Select Manage Services from the menu and press Enter.



3. Select FTP Server in the next menu.



4. In the next menu select Set Parameters.



5. Verify that the anonymous user is enabled and the home directories for Anonymous and Default User are set.

Note: You can specify any directory in any volume as the home directory for Default user or Anonymous user. To do this, grant proper access rights for each directory. Anonymous users should own the Anonymous User's Home Directory, and the other users should have RWCEF access rights for the Default User's Home Directory. Sub directories of these directories inherit the rights from the parent directories and can be used in the same way. To use a sub directory under the Default User's Home Directory for scan-to-file, you need the AXIS 700 software version 1.11 or higher.

Defining File Destinations

Follow these steps to define an FTP / scan-to-file destination in the AXIS 700:

1. Start your Web browser.
2. Enter the name or Internet address of the AXIS 700 on the Location/Address line. The AXIS 700 Home Page is displayed.
3. Click the **Administration** button in the menu on the left side.
4. Enter the user name and password to get access to the **This AXIS 700** page. The default user name is *root* and the default password is *pass*.
5. Click the **Destinations** button in the Administration menu. The **Destination** page is displayed.
6. Click the **New File Destination** button. The **New File Destination** page is displayed.

The screenshot shows a Netscape browser window titled "AXIS 700 - New File Destination - Netscape". The address bar shows "http://172.19.4.22/admin/destinations/new_file.shtml". The page content includes a navigation menu on the left with buttons for "This AXIS 700", "Destinations", "Scanning Profiles", "Paper Sizes", "Network Settings", "Event Log", "Help Contents", and "Home". The main content area is titled "AXIS 700 Network Scan Server" and "New File Destination". It contains a form with the following fields and options:

- Destination Name:
- Scanning Profile: (Can be changed at the moment of scanning.)
- Include Image Information:
- FTP Server:
- User:
- Password:
- Confirm:
- Directory:
- File Name:
- Append sequence number to file name
- Start sequence with:
- Store sequence number on FTP server
- Append file extension to file name

Buttons at the bottom of the form are "Add To List", "Done", and "Reset". A note at the bottom states: "If left blank, the value specified on the Destination Defaults page will be used."

7. Complete the **New File Destination** page.

Destination Name Field

Enter the name of the destination in this field. This name will appear in the list of destinations on the control panel display.

Scanning Profile (Option)

Select the required scanning profile for the destination from the Scanning Profile list. If you select <Default-XXX>, where XXX is the name of the current profile, the profile currently set as default will be used. See the Destinations Defaults page.

Example: <Default-Text> means that the current default profile is Text. This profile will be used by all destinations that have the default profile selected. If the default is changed to Color then the profile Color will be used by all destinations that have the default profile selected.

Include Image Information (Option)

From this list you can select the amount of information you want to send with the scanned image. The information is stored in a text file in the same directory as the image. If you leave the list as it is, the default value will be used.

FTP Server Field

Enter the name or IP address of the NetWare FTP server.

Note: If you decide to use the name of the FTP server instead of the IP address you need to configure the DNS entries in the **TCP/IP** section of the **Network Settings** page.

If you intend to use the anonymous user account to access to the FTP server, you do not need to enter any information in the **User** and **Password** fields.

User Field

Enter the user id, if required, in this field. If the field is left empty, the default value will be used. See the Destination Defaults page.

Password and Confirmation Fields

If you have entered a user id, a password should be specified for the user id in this field. Enter the password a second time for confirmation in the **Confirm** field. If these fields are left blank it indicates that no password will be used. If no user has been specified, the **Password** and **Confirmation** fields are ignored.

Note: You can click the **Reset** button anytime to clear the fields.

The remaining fields on the **Destinations** page, except for **Store sequence number on FTP server**, will use default values if you decide to leave them empty.

Directory Field

You can leave this field empty if you intend to use the Anonymous User's Home Directory or the Default User's Home Directory for storing the images. If you intend to use a subdirectory under the directories named above then you should specify the directory name in this field.

File Name Field

Specify the name of the file. If left blank, the default (see the Destination Defaults page) will be used. The defaults for the following four fields will also be used.

Append Sequence Number to File Name

If you do not want the file to be over-written every time a new image is stored, you should select this option. This means that a unique number will be appended to the file name each time a new file is created.

Start Sequence With

In this list you can decide the minimum number of digits used for the sequence number appended to the file name.

Store Sequence Number on FTP Server

If you select this option, a text file containing the last used sequence number is stored on the FTP server in the specified directory. This speeds up performance, since the whole directory does not have to be scanned each time a new image is stored. It requires that files may be overwritten/deleted, which is not always permitted by default.

Append File Extension

If you select this option the file extension will be appended to the file name.
Save the new destination.

Add to List Button

Click this button to save the new destination and to stay on the **New E-mail Destinations** page. To add more destinations just complete the required fields for the next destination and click the **Add to List** button again.

Done Button

Click this button to return to the **Destinations** page.

Note: The new destination will not be saved if you just click the **Done** button. You must **Add** the new destination first.
