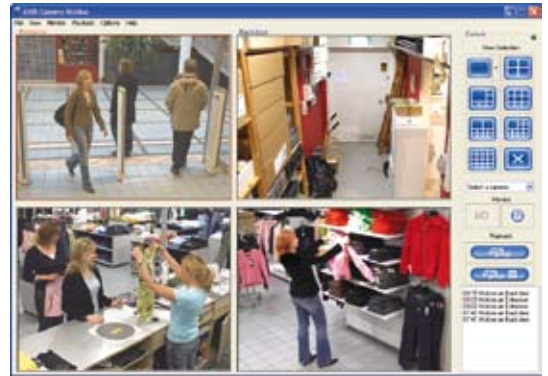


# AXIS Camera Station

## Hardware Recommendations

Minimum requirement to run AXIS Camera Station:

- Intel Dual Core 1.6 GHz
- 512 MB RAM (1024 MB if Vista is used)
- 7200 rpm local hard disk(s) with NTFS file system
- 100Mbit Ethernet with a static IP address
- Microsoft XP Professional SP2, Vista Business or W2003 SP1 Server
- X VGA (1024x768) graphics card with 64 MB or more



Using multiple cameras and higher frame rate will raise the requirements for the hardware.

Some installation scenarios with recommended hardware					
Target		Required Hardware			
Cameras	FPS	Hard disks	Bandwidth (mbit)	CPU (GHz)	RAM
5	5	1	100	1.6	512
	10	1	100	1.8	512
	20	1	100	2.0	512
10	5	2	100	1.8	512
	10	2	100	2.0	512
	20	2	100	2.1	768
15	5	2	100	2.1	512
	10	3	1000	2.4	768
	20	3	1000	2.6	768
20	5	3	100	2.4	768
	10	4	1000	2.6	768
	20	4	1000	Xeon dual 3.0	1024
25	5	3	100	Xeon dual 2.8	768
	10	4	1000	Xeon dual 3.0	1024
	20	4	1000	Xeon dual 3.4	1024

All calculations are based on 640x480 image size and 25% compression using MJPEG. CPU recommendation is based on Intel Dual Core processors.

Using MPEG-4 recording will lower the bandwidth usage and use less hard disk, but more processor power will be used to show live images and playback events to decode the MPEG-4 stream.

For best performance and stability, use local hard disks for primary storage. Network storage or USB/Firewire disks should only be used for archiving (secondary storage).

Software-based RAID systems should not be used, as such a solution could result in performance bottlenecks.

The disk drive (normally C:) where Windows and AXIS Camera Station are installed should have enough disk space for the AXIS Camera Station log files. Allow at least 1 GB free disk space for the log files.

[www.axis.com](http://www.axis.com)

DISCLAIMER: THE RECOMMENDATIONS IS DELIVERED 'AS IS' WITHOUT WARRANTY OF ANY KIND. THE ENTIRE RISK AS TO THE RESULTS AND PERFORMANCE OF THE RECOMMENDATIONS IS ASSUMED BY YOU/THE USER. AXIS COMMUNICATIONS AB DISCLAIMS ALL WARRANTIES, WHETHER EXPRESS OR IMPLIED, INCLUDING BUT NOT LIMITED TO, THE IMPLIED WARRANTIES OF MERCHANTABILITY, FITNESS FOR A PARTICULAR PURPOSE, TITLE AND NON-INFRINGEMENT, OR ANY WARRANTY ARISING OUT OF ANY PROPOSAL, SPECIFICATION OR SAMPLE WITH RESPECT TO THE RECOMMENDATIONS. AXIS AND/OR ITS LICENSOR(S) SHALL NOT BE LIABLE FOR LOSS OF DATA, LOSS OF PRODUCTION, LOSS OF PROFIT, LOSS OF USE, LOSS OF CONTRACTS OR FOR ANY OTHER CONSEQUENTIAL, ECONOMIC OR INDIRECT LOSS WHATSOEVER IN RESPECT OF DELIVERY, USE OR DISPOSITION OF THE SOFTWARE. AXIS TOTAL LIABILITY FOR ALL CLAIMS IN ACCORDANCE WITH THE DELIVERY AND USE OF THE SOFTWARE SHALL NOT EXCEED THE PRICE PAID FOR THE SOFTWARE.