

Lund, April 13, 2015

Axis introduces wireless installation tool for easy and quick setup of network cameras from mobile devices

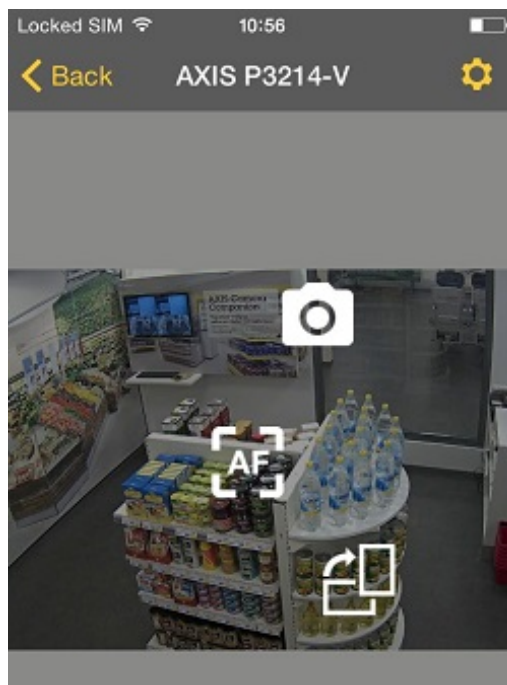
AXIS T8415 Wireless Installation Tool is a battery-powered handheld device able to directly power up network cameras during installation. It includes a free-of-charge app for Android and iOS-based mobile devices allowing for live video feeds to be displayed via a direct Wi-Fi connection. From the live video, easy access to basic key features to set the cameras optimal viewing angle, focus and IP settings.

Axis Communications, the market leader in network video, announces AXIS T8415 Wireless Installation Tool, simplifying on-site installation of network cameras. Together with a streamlined and easy-to-use mobile app, the new Axis tool takes advantage of the convenience and connectivity of today's mobile devices to reduce installation time.

“By using their smartphones or tablets at the installation site, installers can wirelessly connect via an intuitive mobile app to the camera and manage key functions such as angle and focus. In addition to improved efficiency, AXIS T8415 provides installers with a powerful battery that last the whole day”, says Erik Frännlid, Axis’ Director of Product Management. “AXIS T8415 focuses on solving two specific problems: the speed and ease of installation of an IP camera.”

AXIS T8415 is a battery-powered handheld device that connects directly to a camera and displays live video at the installation site. This makes setting the camera's viewing angle and focus easier than with the use of a laptop or remote computer. With its powerful battery, AXIS T8415 can power up an Axis PoE camera up to 30 W for several hours. The tools built-in Wi-Fi function connects it within seconds to an installer's smartphone or tablet so the camera's live view can be accessed in a convenient manner. While the camera is mounted and connected via one-cable connection to the main unit, the installer can get close to the camera with a smartphone device and adjust basic camera functions, such as focus, IP address and image rotation. The app on the smartphone (iOS or Android) can be downloaded free-of-charge from the App Store or Google Play.

Further AXIS T8415 features include:



Multiple camera discovery, including ONVIF

WPA2 password protected

Works with LAN (PC)

USB charging port for handset

Replaceable batteries

AXIS T8415 Wireless Installation Tool is planned to be available in Q2 2015 through Axis distribution partners.

For photos and other resources, please visit:

www.axis.com/corporate/press/press_material.htm?key=t8415

For further information about Axis Communications, please contact:

Lena Hedén, PR Marketing Manager, Axis Communications

Phone: + 46 46 272 1800, E-mail: pressoffice@axis.com.

About Axis

Axis offers intelligent security solutions that enable a smarter, safer world. As the global market leader in network video, Axis is driving the industry by continually launching innovative network products based on an open platform - delivering high value to customers through a global partner network. Axis has long-term relationships with partners and provides them with knowledge and ground-breaking network products in existing and new markets.

Axis has more than 1,900 dedicated employees in more than 40 countries around the world, supported by a network of over 75,000 partners across 179 countries. Founded in 1984, Axis is a Sweden-based company listed on NASDAQ Stockholm under the ticker AXIS. For more information about Axis, please visit our website www.axis.com.