


Axis Print Servers

Product	Professional Print Servers			Small Office Print Servers			Host-LAN Print Servers	
	AXIS 5400+	AXIS 5550	AXIS 5600+	AXIS OfficeBasic	AXIS OfficeBasic USB Wireless G	AXIS 1650	AXIS 5570e TCP/IP	AXIS 5570e IPDS SNA
								
Printer ports ¹⁾	1 parallel	1 parallel 1 USB	2 parallel 1 serial	1 parallel 1 USB	1 USB	1 parallel 1 USB	1 parallel 1 USB	1 parallel 1 USB
Network	10/100BaseT	10/100BaseT	10/100BaseT	10/100BaseT	WLAN 802.11b/g	10/100BaseT	10/100BaseT	10/100BaseT
Management	Enterprise	Enterprise	Enterprise	Small networks	Small networks	Small networks	Enterprise	Enterprise
Firmware upgradable ²⁾	✓	✓	✓	✓	✓	✓	✓	✓
Security	Extensive	Extensive	Extensive	Basic	WPA2-PSK	Basic	Extensive	Extensive
Multilingual ³⁾	✓	✓	✓	✓	✓	✓ ⁴⁾		
Bonjour	✓	✓	✓	✓	✓		✓	✓
Internet Printing Protocol	✓	✓	✓		✓		✓	✓
Copier finishing options								✓
Windows ⁵⁾	✓	✓	✓	✓	✓	✓	✓	✓
Mac OS ⁶⁾	✓	✓	✓	✓	✓		✓	✓
Netware ⁷⁾	✓	✓	✓				✓	✓
Unix/Linux	✓	✓	✓				✓	✓
IBM protocols							TN3270E, TN5250E	TN3270E, TN5250E, SNA, PPR/PPD
IBM formats							SCS, 3270DS	SCS, 3270DS, IPDS
MFP ⁸⁾						✓		
Warranty	3 years	3 years	3 years	1 year	1 year	1 year	3 years	3 years

1) USB low/full speed (ver 1.1 compatible with ver 2.0). 2) Future firmware upgrades are free. 3) English, French, German, Italian, Japanese and Spanish. (Japanese not supported in AXIS OfficeBasic USB Wireless G). 4) English and Japanese only. 5) Windows NT, 98, Me, 2000, XP, 2003, (2000 and XP supported in AXIS OfficeBasic USB Wireless G). 6) Apple EtherTalk, Mac OS 7, 8, 9 and TCP/IP based printing in Mac OS X version 10.x. 7) NetWare 3.12, 4.10, 4.2, 5.X, 6.X and above. Supports bindery and NDS mode. Supports user messages. NDPS supported over IP and IPX. Support for iPrint using both LPR and IPP protocols. Print Methods: NDPS, (IP/IPX), PSERVER (IP/IPX) RPRINTER/NPRINTER, iPrint (LPR/IPP). 8) Canon Print/Fax/Scan

MANAGEMENT

- Small networks: Windows Installation Tool + Web management + Safe firmware upgrade + Automatic IP setting
- Enterprise: All above + E-mail notification + AXIS ThinWizard multi-unit administration + SNMPv1/v2c/v3 + Manual/Automatic Network speed + HTTPS secure Web management

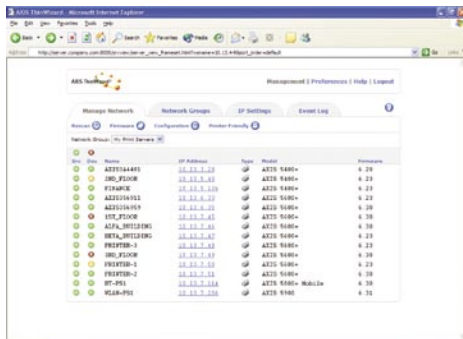
SECURITY

- Basic: Password protected administration
- Extensive: All above + Netware Packet Signature + Secure admin HTTPS + SNMP v3 Secure Management + TCP Printing Restriction

Axis Print Servers

Tools for Installation, Management and Operation

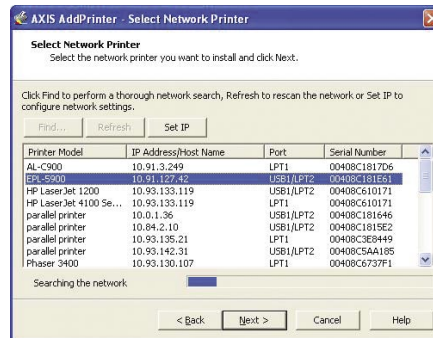
AXIS ThinWizard



AXIS ThinWizard is a powerful and comprehensive Web-based management tool for central administration of multiple print servers with:

- Single screen management for all professional and Host-to-LAN print servers
- Automatic print server discovery and IP address assignment
- Configuration wizard for multi-unit parameter management
- Simultaneous editing of print server parameters, allowing copying configurations between single or multiple servers
- Flexible grouping for viewing and managing many print servers as single entities
- Possibility to assign descriptive names and physical location
- Printer status monitoring, e.g. "Out of paper" and "Toner low"
- Upgrade wizard for multi-unit firmware upgrades, and support for finding the latest release
- Integrated seamless print server management both for individual units and entire installation

AXIS AddPrinter



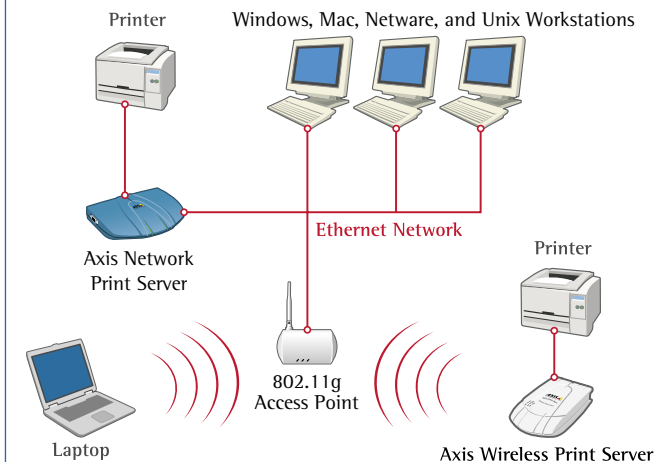
AXIS AddPrinter is designed to help customers who need an easy network printer installation process. Its intuitive installation path saves time and effort to all levels of users, providing printer discovery, installation guidance and simple troubleshooting. AXIS AddPrinter also provides easy access to the print server's web interface for management purposes.

Features:

- Easy step-by-step wizard for network printer discovery and IP address assignment
- Automatic printer driver discovery*
- No additional software is installed on your PC, AXIS AddPrinter simply adds a standard Windows printer object.
- AXIS AddPrinter is distributed on a CD with all Axis print servers
- Support for Windows 2000, Windows XP, Windows Server 2003 over TCP/IP
- Available languages include English, French, German, Italian, Japanese and Spanish

*The correct printer driver comes with your Operating System or printer manufacturer's CD.

System Overview



A network print server is a dedicated server that connects a printer directly to a network. It enables users to print independently of the file server or a dedicated PC.

A wireless print server connects a printer to a wireless network and enables users to print wirelessly from portable devices such as mobile phones, laptops, PDAs and digital cameras. Axis wireless print servers use radio technology such as IEEE 802.11b/g wireless technology. This means there is no need for cables, connectors or other networking hardware.