



Product Guide

Network Video, Network Printing, Scan and Store



Welcome to Axis product guide

We developed this guide to help you navigate our broad range of network video and network connectivity products. In this guide, you will find information about our products. If you are looking for comprehensive product specifications, or information about our solutions and customer cases, please go to our web site www.axis.com or contact your local Axis office.

World leadership

Axis is the world market leader in network video products and the leading independent provider of print servers. We have been developing solutions that add value to your network since 1984 and specifically, network video solutions since 1996. With more than 300,000 professional network video products and over 3 million networking products installed, Axis has the experience to meet your company's needs. It is this experience, combined with our cutting-edge technology that makes Axis the obvious supplier to choose when it comes to network video and network printing.

Product portfolio

Axis specializes in professional network video solutions for remote monitoring, security surveillance and broadcasting. We also provide solutions for network printing, document handling and CD/DVD sharing.

Our range of products includes network cameras, video servers, network video decoders, network print servers, and document and CD/DVD servers.

Technology leadership

The core of the company's product offering is its in-house developed IP-based technology platform, which allows Axis to quickly and cost-effectively adapt its market offering to new applications and product areas. The technology enables easy installation and provides compact and powerful solutions that enable equipment to be securely and rapidly connected to virtually any wired or wireless network.

Network Video

> Network Cameras	4
› Common features and system overview	4
› Fixed network cameras, indoor	5
› Fixed network cameras, indoor/outdoor	6
› Pan/Tilt/Zoom cameras	7
› Network dome cameras	7
› Technical overview	8-9
> Video Servers	10
› Common features and system overview	10
› 1-port video servers	11
› 4-port video servers	11
› Rack for enterprise installations	12
› Technical overview	12-13
> Network Video Decoders	13
› System overview	13
› Product portfolio	13
> Software	14
› Viewing, recording and event management	14
› Viewing	14
> Accessories and Bundles	15

Network Printing

› Common features and system overview	16
› Professional print servers	17
› Host-to-LAN print servers	17
› Small office print servers	18
› Classic print servers	18
› Technical overview	19

Scan and Store

> Network Document Servers	20
› Common features and system overview	20
› Product portfolio	20
› Technical overview	20
> Network CD/DVD Servers	21
› Common features and system overview	21
› Product portfolio	21
› Technical overview	21

Product index	22
----------------------	----

Contact information	23
----------------------------	----



Network Cameras


Watch anything, from anywhere at anytime

Axis Network Cameras provide an easy way to capture and distribute high quality video over any kind of IP network or the Internet. Images can be viewed using a standard web browser and stored on any hard disk. With built-in web server, Axis Network Cameras operate stand-alone and can be placed wherever there is an IP network connection. They enable you to remotely view live video and manage

video feeds from anywhere in the world using any standard Web browser.

Whether you need an IP-Surveillance solution to secure the safety of people and places, remotely monitor property and facilities, or broadcast events on the web with live images and sound, Axis can meet your needs.

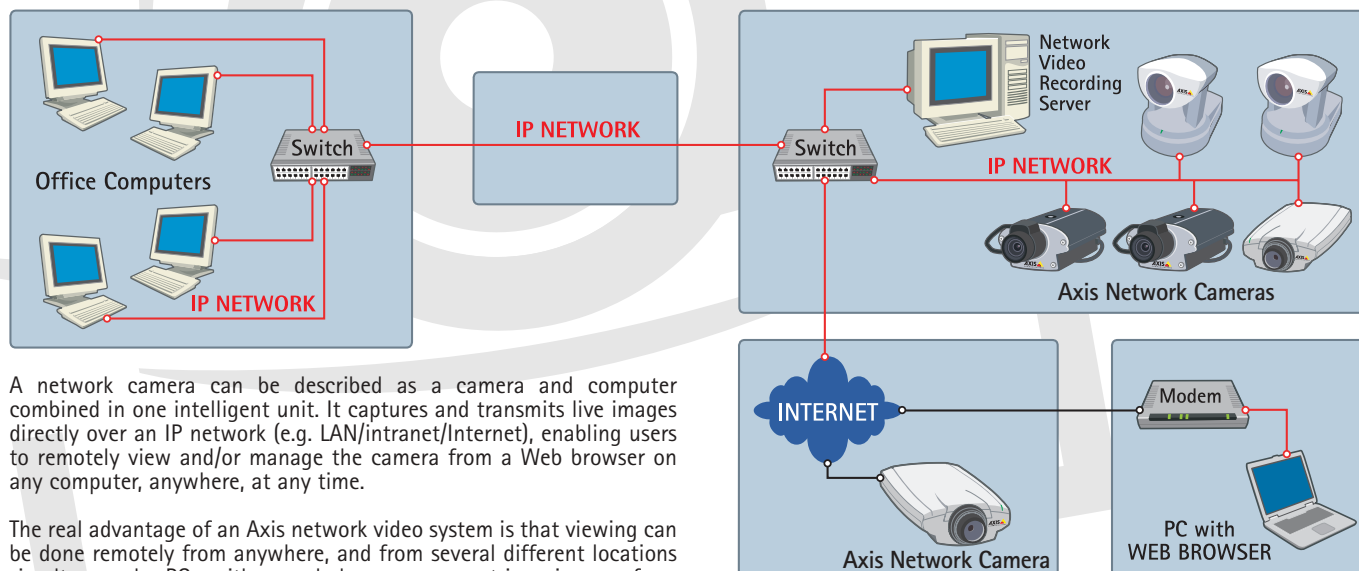
COMMON FEATURES

- ▶ "Axis Superior Image Quality" 
please refer to page 7 for further information
- ▶ Many products based on progressive scan, giving less motion blur and clearer images than on interlaced video or DVRs
- ▶ Direct connection to 10/100BaseT Ethernet networks or wireless
- ▶ Built-in web server - no need for additional hardware or software to capture and transfer images, and manage video
- ▶ Camera can be placed anywhere. PC-independent
- ▶ Security: multi user level password protection for restricted camera access
- ▶ Products with Motion JPEG, MPEG-2 and MPEG-4

BENEFITS

- ▶ Remote access to live images, any time, anywhere, from any authorized computer
- ▶ Digital quality images for perfect viewing
- ▶ Flexibility to place the network camera wherever a network connection is available
- ▶ Wide range of functions and advanced features
- ▶ Wide range of applications
- ▶ Future-proof: the video system can be expanded and grown as long as the network can
- ▶ Backed by the industry's largest base of application software for video and alarm management

SYSTEM OVERVIEW



A network camera can be described as a camera and computer combined in one intelligent unit. It captures and transmits live images directly over an IP network (e.g. LAN/intranet/Internet), enabling users to remotely view and/or manage the camera from a Web browser on any computer, anywhere, at any time.

The real advantage of an Axis network video system is that viewing can be done remotely from anywhere, and from several different locations simultaneously. PCs with a web browser can retrieve images from all the cameras in the system. The video storage system can either be the hard disks connected to a PC or a dedicated storage server on the network.



INDOOR FIXED NETWORK CAMERAS

AXIS 205

The world's smallest network camera, specially designed for businesses and home users who want a remote monitoring product with high quality streaming video, easy-to-use features and an attractive price.

- ▶ Small, compact size
- ▶ Motion JPEG
- ▶ Three different resolutions, up to 640x480
- ▶ Up to 30/25 frames per second in all resolution modes
- ▶ Up to 20 simultaneous viewers
- ▶ Easy installation using the free AXIS Internet Dynamic DNS Service or the Windows-based AXIS IP Utility software



AXIS 206

Network camera for remote monitoring and surveillance, with best in its class light sensitivity.

- ▶ Small, compact size
- ▶ Motion JPEG
- ▶ Three different resolutions, up to 640x480
- ▶ Up to 30/25 frames per second in all resolution modes
- ▶ Up to 10 simultaneous viewers
- ▶ High light sensitivity for low-light environments, down to 4 lux
- ▶ Easy installation using the free AXIS Internet Dynamic DNS Service or the Windows-based AXIS IP Utility software
- ▶ Multilingual product interface - including English, French, German, Italian, Spanish, Chinese, Korean and Japanese
- ▶ AXIS Camera Explorer application software included for easy viewing, management and recording



AXIS 206M Megapixel

The smallest megapixel network camera in the world. Designed for security surveillance and remote monitoring applications that require superior quality and high-resolution Motion JPEG images.

- ▶ Motion JPEG
- ▶ Up to 12 frames per second in resolutions ranging up to 1280x1024 pixels
- ▶ Up to 10 simultaneous viewers
- ▶ Multilingual product interface - including English, French, German, Italian, Spanish, Chinese, Korean and Japanese
- ▶ Easy installation using the free AXIS Internet Dynamic DNS Service or the Windows-based AXIS IP Utility software
- ▶ AXIS Camera Explorer software included for easy viewing, management and recording



AXIS 206W Wireless

The smallest wireless network camera in the world, with built-in Wi-Fi 802.11b wireless connection giving you the freedom to place the camera where it's needed.

- ▶ Wireless operation via Wi-Fi compliant 802.11b (reach of up to 300 ft./100 m with clear line of sight) enables easy installation without the need for networking cables; hence, there is no port for an Ethernet cable
- ▶ Motion JPEG
- ▶ Up to 30/25 frames per second in all resolutions ranging up to 640x480
- ▶ Up to 10 simultaneous viewers
- ▶ Multilingual product interface - including English, French, German, Italian, Spanish, Chinese, Korean and Japanese
- ▶ Easy installation using the free AXIS Internet Dynamic DNS Service or the Windows-based AXIS IP Utility software
- ▶ AXIS Camera Explorer software included for easy viewing, management and recording



AXIS 210

A cost-effective solution for professional indoor security surveillance and remote monitoring.

- ▶ Built-in video motion detection and advanced event management
- ▶ Supports simultaneous Motion JPEG and MPEG-4 streams
- ▶ Up to 30/25 frames per second in all resolutions ranging up to 640x480
- ▶ Up to 20 simultaneous viewers
- ▶ Easy installation using the free AXIS Internet Dynamic DNS Service or the Windows-based AXIS IP Utility software



AXIS 2100

Quality images and streaming video from anywhere on your network.

- ▶ Motion JPEG
- ▶ Up to 15 frames per second
- ▶ Support for audio using additional AXIS 2191 Audio Module and direct dial-up using external modem





INDOOR/OUTDOOR* FIXED NETWORK CAMERAS

AXIS 211

Cost-effective solution for professional indoor and outdoor security surveillance and remote monitoring.

- ▶ Power over Ethernet (IEEE 802.3af)
- ▶ Varifocal DC-Iris lens with a light sensitivity of 0.75 to 500,000 lux
- ▶ Built-in video motion detection and advanced event management
- ▶ Supports simultaneous Motion JPEG and MPEG-4 streams
- ▶ Up to 30/25 frames per second in all resolutions ranging up to 640x480
- ▶ Up to 20 simultaneous viewers
- ▶ Easy installation using AXIS Internet Dynamic DNS Service or the Windows-based AXIS IP Utility software



AXIS 2120

Complete with motion detection, the AXIS 2120 is all you need to keep a visual track of events.

- ▶ Vari-focal lens with DC-Iris for optimal image quality in outdoor light conditions
- ▶ Built-in motion detection
- ▶ Motion JPEG
- ▶ Up to 30/25 frames per second
- ▶ Solid mechanical design with metal casing



AXIS 2110

Cost-effective solution for in- and outdoor* applications such as remote monitoring and web attraction.

- ▶ Complete with vari-focal and manual iris lens
- ▶ Motion JPEG
- ▶ Up to 15 frames per second
- ▶ Support for audio using additional AXIS 2191 Audio Module and direct dial-up using external modem



AXIS 2420⁽¹⁾

Including advanced security features, the AXIS 2420 is designed for professional security and surveillance systems.

- ▶ Simultaneous use in analog and digital systems - Analog video output
- ▶ Support for third-party Pan/Tilt/Zoom devices
- ▶ Built-in motion detection
- ▶ Motion JPEG
- ▶ Up to 30/25 frames per second
- ▶ Applications for event-triggered alarm messaging
- ▶ Solid mechanical design with metal casing



(1) Black and white infrared-sensitive version for extremely low light conditions also available (AXIS 2420 IR Sensitive)

AXIS 230 MPEG-2

The market's most advanced network camera, providing advanced features for demanding security and surveillance applications.

- ▶ IR-sensitive day/night camera with 18x optical zoom lens (remotely controllable) and 12x digital zoom
- ▶ 30/25 frames per second of DVD quality video and synchronized audio over IP networks
- ▶ MPEG-2 image compression
- ▶ Four different resolutions up to 720x576 and seven different quality levels
- ▶ Built-in microphone and support for external audio devices
- ▶ Audio level alarm (alert based on sound level picked up by the camera's microphone)
- ▶ Support for multicasting over a local area network for unlimited number of simultaneous viewers



* Outdoor use requires weatherproof housing

Axis offers convenient and tailor-made solutions for mounting Axis network cameras outdoors and within harsh, humid and dusty environments.

For a full list of available outdoor housings, please contact your local Axis office or visit www.axis.com/products/cam_housing/





INDOOR/OUTDOOR* PAN/TILT/ZOOM CAMERA

AXIS 213 PTZ

PTZ network camera with remote pan, tilt, zoom control over IP networks.



- › 26x optical zoom lens with auto focus
- › Provides useful video under all light conditions, indoor as well as outdoors
- › Superior image quality in simultaneous Motion JPEG and MPEG-4 video streams (MPEG-4 available as a free software upgrade in Q1 2005)
- › Resolutions up to 768x576 at up to 25 fps (PAL) or 704x480 at up to 30 fps (NTSC)
- › IP address filtering and multiple access levels for network security
- › Advanced event management including pre- and post image buffers
- › Powerful API for software integration, publicly available on www.axis.com
- › Optional AXIS 213CM Connection Module for two way audio + alarm inputs and outputs



INDOOR/OUTDOOR* NETWORK DOME CAMERA

AXIS 231D

Network dome camera with pan, tilt and zoom control over IP networks.



- › 18x optical zoom lens with auto focus
- › Remote pan, tilt and zoom control from any PC locally on the LAN or over the Internet
- › Superior image quality in simultaneous Motion JPEG and MPEG-4 video streams (MPEG-4 available as a free software upgrade in Q1 2005)
- › Resolutions up to 768x576 at up to 25 fps (PAL) or 704x480 at up to 30 fps (NTSC)
- › Operates down to 0.3 lux @ F1.4 (30 IRE)⁽¹⁾
- › Strong security package with HTTPS and IP-address filtering
- › Resolution equal to analog video of up to 480 TVL⁽²⁾
- › 4 alarm in and 4 alarm out for event management
- › Powerful API, available on www.axis.com

(1) IRE is the threshold defined when the image moves from acceptable to unacceptable quality, and is measured/defined as % of full quality signal.

(2) TVL is a definition used in the analog CCTV world to qualify picture quality. The higher the value, the better the quality. Normal grade CCTV cameras are around 330TVL, while a high grade camera would be around 460-470 TVL.

IMAGE QUALITY

Unlike traditional analog cameras, network cameras are equipped with the processing power not only to capture and present images, but also to digitally manage and compress them for network transport. Image quality can vary considerably and is dependent on the choice of optics and image sensor, the available processing power and the level of sophistication of the algorithms in the processing chip. To summarize, look specifically at:

- › The ability to correctly capture moving objects
- › File size and bandwidth requirements
- › Additional image enhancements
- › The type of image sensor
- › Low light capabilities
- › Lens replacement
- › Image resolution



Why is Axis image quality superior?

Since the development of network cameras first began, Axis introduced a stream of image enhancing technologies and patents. From a technical point of view, Axis' Superior Image Quality rests on three pillars:

- › Advanced signal processing, image enhancement algorithms and video compression technologies
- › Custom-designed image processing and video networking chips
- › Careful selection and matching of the latest high-end image sensors and lenses.

Axis has the best image quality in the world when comparing cameras in the same price range. Of course, you don't have to take our word for it - the best way to experience Axis' Superior Image Quality is to test our cameras and see for yourself.

For more informations about Axis' Superior Image Quality, please visit www.axis.com/superior/



TECHNICAL OVERVIEW OF NETWORK CAMERAS

Indoor						
Fixed Network Cameras						
Product name	AXIS 205	AXIS 206	AXIS 206M Megapixel	AXIS 206W Wireless	AXIS 210	AXIS 2100
Compression	Motion JPEG	Motion JPEG	Motion JPEG	Motion JPEG	Simultaneous Motion JPEG and MPEG-4	Motion JPEG
Frames per second	Up to 30	Up to 30	Up to 12	Up to 30	Up to 30, for all resolutions	Up to 15
Audio support						✓ ⁽¹⁾
Motion detection					✓	
Pan/Tilt/Zoom control						
Max video resolution (pixels)	640 x 480	640 x 480	1280x1024	640 x 480	640 x 480	640 x 480
Image sensor	1/4" progressive scan CMOS	1/4" Superior progressive scan CMOS	1/2" Superior progressive scan CMOS	1/4" Superior progressive scan CMOS	1/4" Sony Super HAD progressive scan RGB CCD	1/4" Sony Super HAD progressive scan RGB CCD
Lens type	4.0 mm/F 2.0 fixed iris	4.0 mm/F 2.0 fixed iris	10 mm/F 2.8 fixed iris	4.0 mm/F 2.0 fixed iris	4.0 mm/F 2.0 fixed iris CS mount	4.0 mm/F 2.0 fixed iris CS mount
Lens changeable					✓	✓
Light sensibility (Lux)	10 - 10.000	4 - 10.000	10 - 10.000	4 - 10.000	3 - 10.000	3 - 10.000
Analog video output						
Ethernet networks	10/100BaseT	10/100BaseT	10/100BaseT	WiFi 802.11b	10/100BaseT	10/100BaseT
Modem support						✓
Serial connectors						RS232
Alarm input/output					1/1	1/1
Included software		AXIS Camera Explorer	AXIS Camera Explorer	AXIS Camera Explorer		

(1) Requires the AXIS 2191 Audio Module

About Axis' MPEG-4 support

Select Axis video products feature advanced real-time video encoding that can deliver simultaneous MPEG-4 and Motion JPEG streams. This gives users the flexibility to maximize image quality for recording and reduce bandwidth needs for live viewing.

Unlike many basic implementations, Axis' MPEG-4 support is fully compliant with the ISMA industry standard, and implements the 'Advanced Simple Profile (ASP)' up to Level 5 to provide outstanding image quality and high compression ratios.

Furthermore, Axis' multicasting support enables an unlimited number of viewers without sacrificing network system performance.



TECHNICAL OVERVIEW OF NETWORK CAMERAS

Indoor/outdoor ⁽¹⁾						
Fixed Network Cameras					Pan/Tilt/Zoom Camera	Network Dome Camera
AXIS 211	AXIS 2110	AXIS 2120	AXIS 2420 ⁽²⁾	AXIS 230 MPEG-2	AXIS 213 PTZ	AXIS 231D
Simultaneous Motion JPEG and MPEG-4	Motion JPEG	Motion JPEG	Motion JPEG	MPEG-2	Motion JPEG MPEG-4 (Q1 2005)	Motion JPEG MPEG-4 (Q1 2005)
Up to 30, for all resolutions	Up to 15	Up to 30/25 (NTSC/PAL)	Up to 30/25 (NTSC/PAL)	30/25 (NTSC/PAL)	Up to 30, for all resolutions	Up to 30, for all resolutions
✓	✓ ⁽³⁾	✓ ⁽³⁾	✓ ⁽³⁾	✓ (built-in, simplex)	✓ ⁽⁴⁾	
		✓	✓	✓ ⁽⁶⁾	✓ (built-in)	✓ (built-in)
640 x 480	640 x 480	704 x 576 (PAL) 704 x 480 (NTSC)	704 x 576 (PAL) 704 x 480 (NTSC)	720 x 576 (PAL) 720 x 480 (NTSC)	768 x 576 (PAL) 704 x 480 (NTSC)	768 x 576 (PAL) 704 x 480 (NTSC)
1/4" Sony Super HAD progressive scan RGB CCD	1/4" Sony Super HAD progressive scan RGB CCD	1/3" Sony ExView HAD interlaced CCD	1/3" Sony ExView HAD interlaced CCD	1/4" Sony ExView HAD interlaced CCD Day/Night functionality	1/4" Sony ExView HAD interlaced CCD	1/4" Sony ExView HAD interlaced CCD
3.0 - 8mm/F1.0 auto iris lens manual varifocal CS mount	3.5 - 8.0 mm/F1.4 manual iris lens manual varifocal CS mount	3.5 - 8.0 mm/F1.4 auto iris lens manual varifocal CS mount	2.8 - 12 mm/F1.4 auto iris lens manual varifocal CS mount	4.1 - 73.8 mm/F1.4 - F3.0 auto iris and auto focus lens 18x optical zoom 12x digital zoom	3.5 - 91 mm/F1.6 - F4.0 auto iris and auto focus lens 26x optical zoom 12x digital zoom	4.1 - 73.8 mm/F1.4 - F3.0 auto iris and auto focus lens 18x optical zoom 12x digital zoom
✓	✓	✓	✓			
0.75 - 500.000	1 - 200.000	1 - 200.000	1 - 200.000 0.5 - 200.000 ⁽⁷⁾	down to 0.3 (Color) down to 0.005 (B/W)	Down to 1 lux in normal mode and complete darkness using built-in IR lighting	Down to 0.3 lux
			✓	✓	✓ (when mounted in ceiling)	
10/100BaseT, PoE ⁽⁸⁾	10/100BaseT	10/100BaseT	10/100BaseT	10/100BaseT	10/100BaseT	10/100BaseT
	✓	✓	✓			
	RS232	RS232	RS232, RS422, RS485	RS232, RS485		
1/1	1/1	1/1	1/1	2/1	2/3 ⁽⁴⁾	4/4

(1) Outdoor use requires weather-proof housing

(2) The AXIS 2420 Network Camera can be delivered with or without lens, also available in an B/W IR Sensitive version

(3) Requires the AXIS 2191 Audio Module

(4) Requires the AXIS 213 Connection Module

(5) Requires additional third party Pan/Tilt/Zoom device

(6) Zoom built-in. Requires additional third party Pan/Tilt device for Pan/Tilt control

(7) IR Sensitive version

(8) Supports Power over Ethernet in accordance with 802.3af



Video Servers

Helping you migrate your analog security system into an IP-based video solution

Axis video servers integrate easily into your existing analog CCTV (closed circuit television) system. A video server digitizes analog video signals and distributes digital images directly over an IP-based network (e.g. LAN/intranet/Internet),

turning analog cameras into network cameras and enabling users to view live images from a web browser on any networked computer, anywhere and at any time.

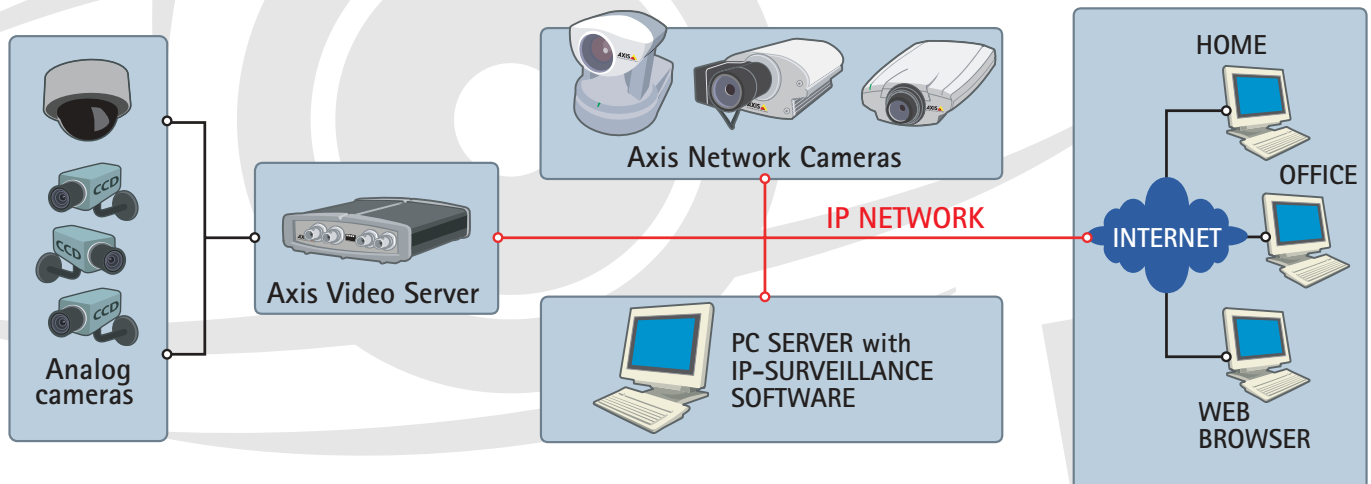
COMMON FEATURES

- High-quality video from analog video sources
- Direct connection to 10/100BaseT Ethernet networks
- Independent system with embedded web server
- Remote configuration and status using web-based tools
- Blade versions available for use in 19" rack mount (except for AXIS 2411)
- Products with Motion JPEG and MPEG-2
- HTTP-based application programming interface (API) for integration with applications

BENEFITS

- Remote access to live images, any time, anywhere, from any computer
- Ease of integration and future-proof
- Lower total cost of ownership by leveraging existing network infrastructure and legacy equipment
- Convenient digital video storage
- Increased functionalities compared to CCTV system
- Wide range of application software from Axis' Application Developer Partners

SYSTEM OVERVIEW



A video server includes one or more analog video inputs, image digitizer, image compressor and web server with network interface. Video servers digitize analog video sources and distribute digital images over a computer network, turning an analog camera into a network camera. It is ideal for migrating an existing analog system to a network video solution.

By combining an analog CCTV system with a network video system, you acquire all the functionality and benefits that digital technology offers: remote accessibility, cost-effectiveness, flexibility, scalability, integration and future-proof functionality, and superior image quality.



1-PORT VIDEO SERVERS



AXIS 241S

The AXIS 241S has one analog video input and one video loop-through port for an analog monitor, in addition to an Ethernet connection, and I/O connections.

- › Motion JPEG
- › Up to 30/25 frames per second
- › 10 different resolutions up to 768x576 (PAL) and 704x480 (NTSC), and 5 different compression levels
- › Built-in video motion detection
- › 4 freely configurable alarm inputs and 4 outputs
- › 9 MB pre/post alarm memory per channel
- › Support for third-party Pan/Tilt/Zoom devices, using uploadable PTZ drivers
- › Advanced event handling with multiple ways of notification via e-mail, TCP and HTTP, and video uploading via e-mail, FTP and HTTP
- › Image customization with text, time/date and image overlay
- › Supports up to 20 simultaneous viewers
- › Strong security package with multi-level password, HTTPS and IP-filtering
- › Auto sensing for PAL and NTSC



AXIS 2411

Entry-level, single channel video server that digitizes and compresses video from an analog camera to provide high quality, digital image streams over an IP network.

- › A compact solution for video transmission over distances
- › High quality Motion JPEG images - at up to 30 frames per second

AXIS 250S MPEG-2

Cost-effective and independent system for streaming DVD-quality video with synchronized stereo audio across networks.



- › 30/25 frames per second
- › Real-time MPEG-2 hardware compression and transmission; high resolution video at full motion speed
- › Up to 1 minute of pre-alarm video buffer
- › Support for third-party Pan/Tilt/Zoom devices, using uploadable PTZ drivers
- › Multicast support: any number of clients can view the MPEG-2 video stream simultaneously on a local network
- › 4 alarm inputs and 1 alarm output
- › Supports both composite and Y/C (S-VHS) video

AXIS 2401+

Connects to one analog camera and provides a connection to an Ethernet network.



- › Up to 30/25 frames per second with Motion JPEG
- › User-controlled compression levels
- › 1 analog video input with loop-through connector
- › 4 alarm inputs and 1 output
- › Event handling including mail, TCP, HTTP and FTP notification and video upload
- › Auto sensing for PAL and NTSC
- › Support for multiple third-party Pan/Tilt/Zoom devices
- › Modem support
- › Support for audio using additional AXIS 2191 Audio Module and direct dial-up using external modem

4-PORT VIDEO SERVERS



AXIS 241Q

The AXIS 241Q can connect up to four analog cameras and transmit digital video from all four channels simultaneously via an Ethernet connection.

- › Up to 120/100 frames per second
- › Other features the same as AXIS 241S, excluding Y/C support (please refer to "1-port video servers" for details)

AXIS 2400+

Connects up to 4 analog video cameras (quad image view), including up to 4 Pan/Tilt/Zoom video cameras.



- › Same features as AXIS 2401+ (please refer to "1-port video servers" for details)



TECHNICAL OVERVIEW OF VIDEO SERVERS

	1-port Video Servers				4-port Video Servers	
Product name	AXIS 241S	AXIS 250S MPEG-2	AXIS 2401+	AXIS 2411	AXIS 241Q	AXIS 2400+
Compression	Motion JPEG	MPEG-2	Motion JPEG	Motion JPEG	Motion JPEG	Motion JPEG
Total FPS (NTSC/PAL)	Up to 30/25	30/25	Up to 30/25	Up to 30/25	Up to 30/25 per channel	Up to 30/25
Audio support		✓ synchronized audio (included)	✓ ⁽¹⁾			✓ ⁽¹⁾
Pan/Tilt/Zoom control	✓ ⁽²⁾	✓ ⁽²⁾	✓ ⁽²⁾		✓ ⁽²⁾	✓ ⁽²⁾
Max video resolution (pixels)	768 x 576 (PAL) 704 x 480 (NTSC)	720 x 576 (PAL) 720 x 480 (NTSC)	704 x 576 (PAL) 704 x 480 (NTSC)	704 x 576 (PAL) 704 x 480 (NTSC)	768 x 576 (PAL) 704 x 480 (NTSC)	704 x 576 (PAL) 704 x 480 (NTSC)
Video source	1 BNC composite input NTSC/PAL Auto sensing ⁽³⁾	1 BNC composite or Y/C video (S-VHS) input NTSC/PAL Auto sensing	1 BNC composite input NTSC/PAL Auto sensing	1 BNC composite input NTSC/PAL Auto sensing	4 BNC composite input NTSC/PAL Auto sensing	4 BNC composite input NTSC/PAL Auto sensing
Security	HTTPS ⁽⁴⁾ IP Filtering Multi-level password	IP Filtering Multi-level password	Multi-level password	Multi-level password	HTTPS ⁽⁴⁾ IP Filtering Multi-level password	Multi-level password
Video motion detection (VMD)	✓				✓	
Analog loop-through port	✓		✓			
Ethernet networks	10/100 BaseT	10/100 BaseT	10/100 BaseT	10/100 BaseT	10/100 BaseT	10/100 BaseT
Modem support			✓			✓
Serial connectors	RS232, RS485	RS232, RS422, RS485	2xRS232, RS422, RS485		RS232, RS485	2xRS232, RS422, RS485
Alarm input/output	4/4	4/1	4/1		4/4	4/1
Blade version available	✓	✓	✓		✓	✓

(1) Requires the AXIS 2191 Audio Module

(2) Requires additional third party Pan/Tilt/Zoom device

(3) AXIS 241S accept Y/C video by use of converter cable, not included

(4) This product includes software developed by the Open SSL Project for use in the OpenSSL Toolkit (<http://openssl.org>)



FOR ENTERPRISE INSTALLATIONS

AXIS Rack Solution



The AXIS Rack Solution enables large, surveillance installations to quickly install many video servers in the same rack.

Solution components:

- ▶ 19-inch AXIS Video Server Rack
 - 12 slots for Axis video server blades; "Hot Swap" support
 - Network, serial communication and I/O connectors at the rear of each slot, and common power supply
 - Expandable system, simply by adding blades and wiring up
 - Integrated power supply for easy installation/expansion, and easy addition of back-up power solutions
 - Higher density of video channels compared with stand-alone solutions
 - Improved serviceability and trouble-free unit replacement
- ▶ Any combination of AXIS 2400+, AXIS 2401+, AXIS 250S, AXIS 241Q and AXIS 241S Blade Video Servers

Network Video Decoders

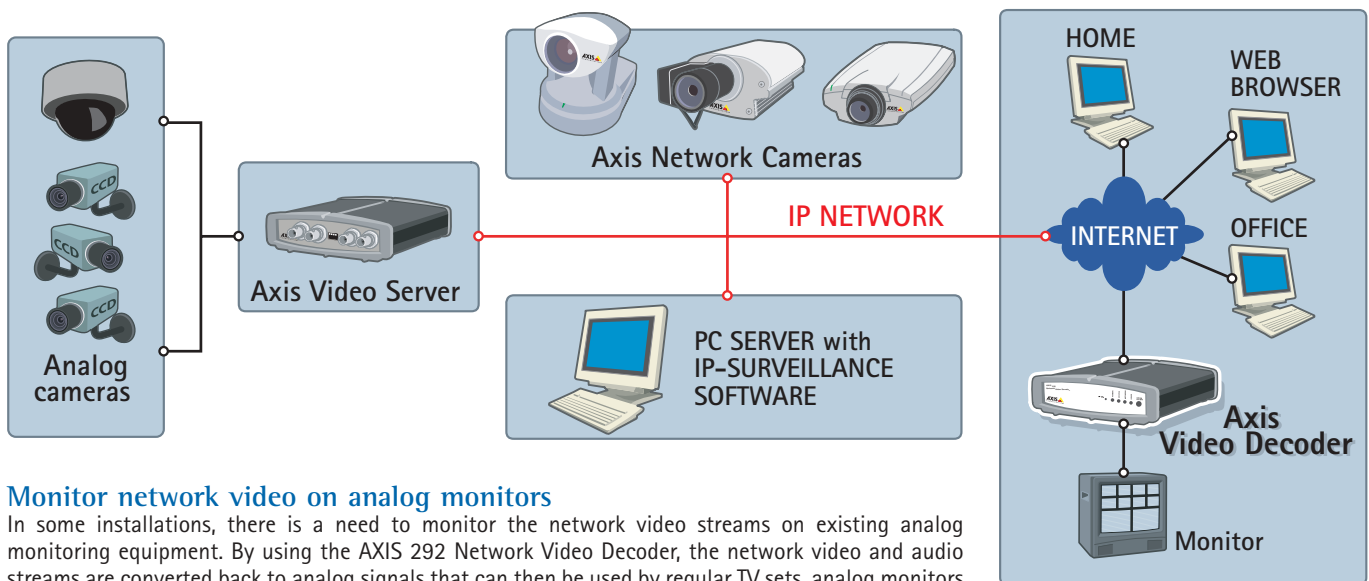
AXIS 292 Network Video Decoder



The AXIS 292 decodes digital video and audio streams for analog systems. It converts audio, and both full frame rate MPEG-2 and Motion JPEG streams from a remote networked source to high-resolution, superior image quality analog composite or Y/C video.

- ▶ Decodes network video and audio without the need for a PC
- ▶ Provides one channel of video and simplex audio
- ▶ Supports both Composite (BNC and RCA) and Y/C (S-VHS) (Mini-Din) video out
- ▶ Supports all MPEG-2 and Motion JPEG based Axis products, automatically detects the format used
- ▶ Capable of decoding video at full frame rate (30/25 fps)
- ▶ Video enable button (connect/disconnect)
- ▶ Resolution of analog video over 500 TVL

SYSTEM OVERVIEW



Monitor network video on analog monitors

In some installations, there is a need to monitor the network video streams on existing analog monitoring equipment. By using the AXIS 292 Network Video Decoder, the network video and audio streams are converted back to analog signals that can then be used by regular TV sets, analog monitors and video switches.



Software for Axis network video products

Remote viewing, recording and event management

Axis offers several network video software solutions that complement our network cameras and video servers. Axis' Application Development Partners (ADP) can also offer a wide

range of complete video application solutions that meet varying specifications and requirements for different application areas.

VIEWING, RECORDING AND EVENT MANAGEMENT

AXIS Camera Station

The AXIS Camera Station is an IP-Surveillance software that works with Axis network cameras and video servers to provide video monitoring, recording and event management functions. Users can record video continuously, on schedule, on alarm and/or on motion detection. The software has multiple search functions for recorded events. Remote viewing and playback are also possible with the use of a Web browser or the AXIS Camera Station Windows client.

AXIS Camera Recorder

The AXIS Camera Recorder software offers Windows PC users automatic recording and live monitoring functions for security surveillance at an attractive price level. With the AXIS Camera Recorder, users can record video continuously, on schedule, on alarm and/or on motion detection. The software offers alerts to alarm events via computer sound or e-mail, as well as search functions based on event or date and time.

VIEWING

AXIS Camera Explorer and AXIS Camera Explorer for Pocket PC

AXIS Camera Explorer software enables viewing on a PC and PDA operating on Windows, as well as manual recording of video on a PC, directly in Microsoft Windows Explorer.

APPLICATION DEVELOPMENT PARTNERS

Axis' Application Development Partners (ADP), which comprise more than 150 companies, give you access to a wide variety of software solutions for security surveillance, remote monitoring or broadcasting needs that are fully compatible with Axis network video products.

For further information, please visit www.axis.com/partner/adp_partners.htm

TECHNICAL OVERVIEW

Software	AXIS Camera Station	AXIS Camera Recorder	AXIS Camera Explorer	AXIS Camera Explorer for Pocket PC
Application	Recording and security surveillance/remote monitoring	Recording and security surveillance/remote monitoring	Remote viewing	Remote viewing
Live viewing	Up to 25 (16 in same view)	Up to 16	4	1
Recording modes	Scheduled, motion detection, alarm triggers, manual recording	Manual, scheduled, motion detection, alarm triggers	Manual	Manual
Provides motion detection (whether camera has built-in video motion detection or not)	✓	✓		
Supports built-in video motion detection in Axis network video products (saves use of bandwidth)	✓			
Recording length	No limit	Limited*	Short-term recommended	Short-term recommended
Archiving	✓			
Remote viewing and playback via the Web	✓			
Remote viewing, playback and administration via Windows client	✓			
User controlled access per camera	✓			
Audio support	✓			
Alarm alert functions (beep and e-mail)	✓	✓		
Interactive PTZ control	✓	✓	✓	
Event-based search function	✓			
Event logging	✓	✓		
Language support	English	English, German, French, Spanish	English, Japanese	English
Works on PC/workstation	✓	✓	✓	
Works on PDA running Pocket PC 2002/2003				✓

* 600,000 image frames per camera (e.g. 24 hours at 7 fps or 1 week at 1 fps)



AXIS Camera Station User interface

AXIS Camera Station runs as a Windows service in the background on a dedicated PC. Since remote viewing and playback are possible with the use of a web browser or with the AXIS Camera Station's Windows client, there is no need to be at the PC that is doing the actual recording.

Red frame around image when recording

Live view



View selection

I/O control

View recordings

Event log

Hardware accessories

A full range of accessories for all your video communication needs

Axis provides a wide range of complementary audio, video and network accessories and devices for your network cameras and video servers. They include the products listed below, as well as wireless and Power-over-Ethernet devices,

IR illuminators, lenses and lens accessories, mounting and power accessories, connectors and cables.

A full list of available accessories can be found on Axis' website at www.axis.com/products/video/accessories/

AXIS 2191 Audio Module

Used together with Axis network cameras and video servers, the AXIS 2191 Audio Module enhances video communication with audio capability.

- ▶ Easy access to real-time audio and video over networks and the Internet
- ▶ Two-way audio communication in full duplex via Internet Explorer
- ▶ No extra software required



(for use with AXIS 2100, 2110, 2120 and 2420 Network Cameras, and AXIS 2400+ and 2401+ Video Servers). For an updated list of products supported by the AXIS 2191 Audio Module, please visit our website.

AXIS 2490 Serial Server

The AXIS 2490 Serial Server allows serial devices to connect directly to an Ethernet network without using a PC, thus providing remote access to these resources via HTTP and TCP/IP.

- ▶ Connects serial devices to IP networks (Ethernet/Fast Ethernet)
- ▶ Built-in web server
- ▶ Two RS-232 ports and one RS-485/422 port
- ▶ Password protection and IP address filtering



Bundles

Complete solutions and special offers

Axis offers a number of product bundles, for instance a network camera with outdoor housing and a package of several network cameras with video software. These solutions

let you get started quickly with your video application. For a full list of available bundles and special offers, please visit www.axis.com or contact your local Axis office.



Network Print Servers

Intelligent printer connectivity for any printing need

Axis provides a wide range of print servers to meet your specific printing needs. With over 20 years of networking excellence and the most complete family of wired and wireless printing solutions, Axis print servers deliver the intelligence

and open connectivity for sharing any printer over any network. From small offices and local networks to large organizations and enterprise networks, Axis can offer proven and reliable network printing solutions for every need.

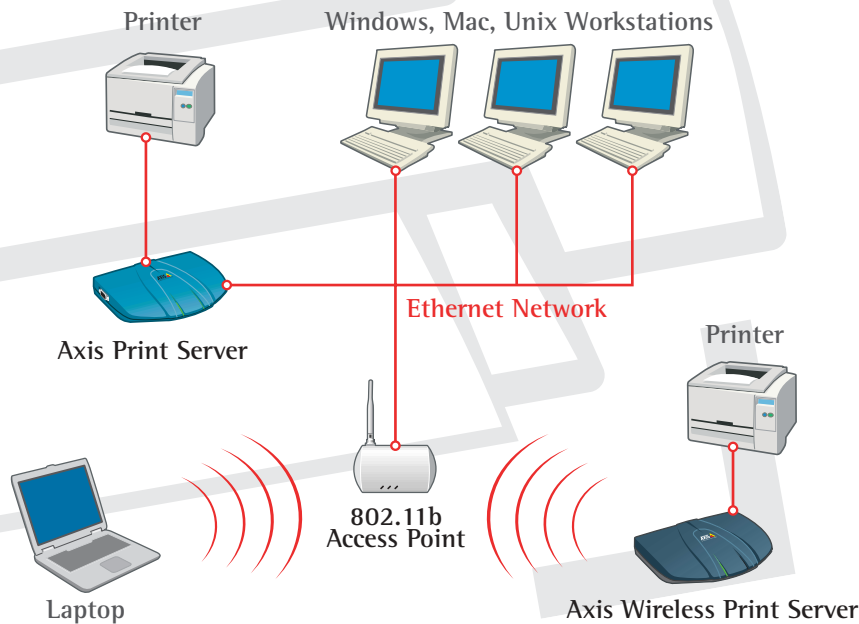
COMMON FEATURES

- Compatibility with all printer brands on the market
- Simultaneous multiprotocol support for printer sharing across many different platforms
- Web-based management
- Client software for ease of installation

BENEFITS

- The most complete range of reliable, scalable print solutions for small offices to large enterprises
- Intelligent and open connectivity for any printer*, anywhere
- Ease of use: simple access to printer resources for everyone
- Uniform network management for greater control
- Flexibility

SYSTEM OVERVIEW



A network print server is a dedicated server that connects a printer directly to a network. It enables users to print independently of the file server or a dedicated PC.

A wireless print server connects a printer to a wireless network and enables users to print wirelessly from portable devices such as mobile phones, laptops, PDAs and digital cameras. Axis wireless print

servers use radio technology such as IEEE 802.11b WLAN or Bluetooth™ wireless technology. This means there is no need for cables, connectors or other networking hardware.

Proven and reliable with over 3 million printers networked with Axis print servers worldwide, Axis helps you network any popular printer* brand and type.

* Host based printers such as GDI, CAPT and PPA are not supported



PROFESSIONAL PRINT SERVERS

High performance print servers that make your daily work easier

Axis' professional print servers are specially designed to network printers in complex and demanding environments. All models combine high flexibility, stability, broad protocol support and extensive management possibilities. In addition, ease of use is emphasized with multi-language support, Rendezvous

support and a new automated network printer installation tool for Windows. High performance, multi-unit management and secure administration makes these print servers the natural choice for professional use in any business, from small companies to large enterprises.



AXIS 5400+

Single parallel port pocket print server.

- ▶ 10BaseT/100BaseTX Ethernet
- ▶ Plugs directly into the parallel port of any printer*



AXIS 5500

USB pocket print server.

- ▶ 10BaseT/100BaseTX Ethernet
- ▶ Connects to the USB port of any printer*



AXIS 5550

Future-proof print server supporting both parallel and USB printers

- ▶ 10BaseT/100BaseTX Ethernet
- ▶ Print to USB and parallel printers* simultaneously

AXIS 5600+

Multiport print server for efficient printer sharing.

- ▶ 10BaseT/100BaseTX Ethernet
- ▶ Print to 2 parallel and 1 serial printers* simultaneously



AXIS 5800+⁽¹⁾

Dual parallel port print server adding Bluetooth access to your printers.

- ▶ 10BaseT/100BaseTX Ethernet
- ▶ Bluetooth™ wireless technology
- ▶ Print to 2 parallel printers* simultaneously



(1) Not available in the US

AXIS 5900

Wireless dual port print server

- ▶ 10BaseT/100BaseTX Ethernet or 802.11b wireless networks
- ▶ Print to 2 parallel printers* simultaneously



HOST-TO-LAN PRINT SERVERS

*Print from IBM host systems via any port to any printer**

Axis' Host-to-LAN print servers are an extension of our "professional" offering, including all the extensive functionalities of this print server family. In addition, they convert IBM print data streams (IPDS to PostScript or PCL, and SCS to PCL and Matrix) and support IBM protocols (SNA, TN3270E and

TN5250E). These reliable, high-performance print servers make it possible to use virtually any printer with your IBM Mainframe or AS/400 system - without loading it with heavy conversion jobs.



AXIS 5670e

Multiport print server for efficient printer sharing.

- ▶ 10BaseT/100BaseTX Ethernet
- ▶ Print to 2 parallel and 1 serial printers* simultaneously
- ▶ Available in two versions: 'TCP/IP' for SCS conversion and 'IPDS SNA' adding IPDS conversion and SNA support



AXIS 670e

Token Ring print server for IBM Mainframe and AS/400 environments.

- ▶ 4/16 Token Ring networks
- ▶ Print to 2 parallel and 1 serial printers* simultaneously

AXIS 5570e

Future-proof pocket print server supporting both parallel and USB printers.

- ▶ 10BaseT/100BaseTX Ethernet
- ▶ Print to USB and parallel printers* simultaneously
- ▶ Available in two versions: 'TCP/IP' for SCS conversion and 'IPDS SNA' adding IPDS conversion and SNA support



* Host based printers such as GDI, CAPT and PPA are not supported



NETWORK PRINTING

Professional

Host-to-LAN

Small Office

Classic

SMALL OFFICE PRINT SERVERS

Sharing printers has never been easier

Axis' small office print servers, focused on ease of use, are specially designed for the needs of small and home offices. These print servers have inherited the well-known quality, performance and stability of the professional print server family - without the extensive flexibility, protocol support and management

capabilities, which are not needed in small networks. In addition, ease of use is emphasized with multi-language support, Rendezvous support and a new automated network printer installation tool for Windows.

AXIS OfficeBasic USB

USB pocket print server.

- ▶ 10BaseT/100BaseTX Ethernet
- ▶ Connects to the USB port of any printer*



AXIS OfficeBasic Parallel

Parallel port pocket print server.

- ▶ 10BaseT/100BaseTX Ethernet
- ▶ Plugs directly into the parallel port of any printer*



AXIS OfficeBasic USB Wireless

Wireless pocket USB print server.

- ▶ Support for 802.11b wireless networks
- ▶ Connects to the USB printer* port



AXIS 5810 Print Plug

Pocket-sized Bluetooth wireless print server.

- ▶ Plugs directly into the parallel port of any printer*
- ▶ Bluetooth printing from a PC, PDA or mobile phone



CLASSIC PRINT SERVERS

10Mb and Token Ring Print Servers

Axis' range of classic print servers is comprised of solutions for 10Mb Ethernet and Token Ring networks.

AXIS 540+

Parallel port pocket print server.

- ▶ 10BaseT Ethernet print server
- ▶ Plugs directly into the parallel port of the printer*



AXIS 560

Multiport print server for efficient printer sharing.

- ▶ 10BaseT Ethernet print server
- ▶ Print to 2 parallel and 1 serial printers* simultaneously



AXIS 660

Token Ring print server for multiprotocol environments.

- ▶ 4/16 Token Ring networks
- ▶ Print to 2 parallel and 1 serial printers* simultaneously



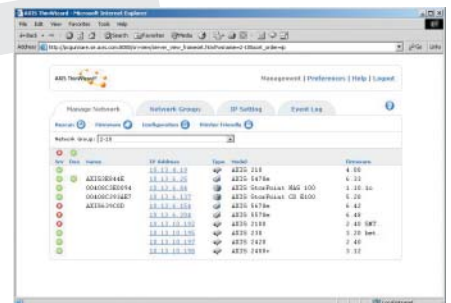
* Host-based printers such as GDI, CAPT and PPA are not supported.

TOOLS FOR INSTALLATION, MANAGEMENT AND OPERATION OF PRINT SERVERS

AXIS ThinWizard

AXIS ThinWizard is a powerful and comprehensive Web-based management tool for central administration of multiple print servers with:

- ▶ Single screen management for all professional and Host-to-LAN print servers
- ▶ Automatic print server discovery and IP address assignment
- ▶ Configuration wizard for multi-unit parameter management
- ▶ Simultaneous editing of print server parameters, allowing copying configurations between single or multiple servers
- ▶ Flexible grouping for viewing and managing many print servers as single entities
- ▶ Possibility to assign descriptive names and physical location
- ▶ Printer status monitoring, e.g. "Out of paper" and "Toner low"
- ▶ Upgrade wizard for multi-unit firmware upgrades, and support for finding the latest release
- ▶ Integrated seamless print server management both for individual units and entire installation





TECHNICAL OVERVIEW OF PRINT SERVERS

Professional Print Servers							Classic Print Servers			Small Office Print Servers			
Product	AXIS 5400+	AXIS 5500	AXIS 5550	AXIS 5600+	AXIS 5900	AXIS 5800+	AXIS 540+	AXIS 560	AXIS 660	AXIS OfficeBasic Parallel	AXIS OfficeBasic USB	AXIS OfficeBasic USB Wireless	AXIS 5810
Printer ports ⁽⁴⁾	1 Parallel	1 USB	1 Parallel 1 USB	2 Parallel 1 Serial	2 Parallel	2 Parallel	1 Parallel	2 Parallel 1 Serial	2 Parallel 1 Serial	1 Parallel	1 USB	1 USB	1 Parallel
Network	10/100BaseT	10/100BaseT	10/100BaseT	10/100BaseT	10/100BaseT or 802.11b	10/100BaseT Bluetooth	10BaseT	10BaseT	TokenRing	10/100BaseT	10/100BaseT	W-Lan 802.11b	Bluetooth
Management	Enterprise	Enterprise	Enterprise	Enterprise	Enterprise	Large networks	Large networks	Large networks	Large networks	Small networks	Small networks	Small networks	PAN
Firmware upgradable ⁽⁶⁾	✓	✓	✓	✓	✓	✓	✓	✓	✓	✓	✓	✓	✓
Security	Extensive	Extensive	Extensive	Extensive	Extensive	Basic	Basic	Basic	Basic	Basic	Basic	Basic	Bluetooth
Multi language ⁽⁵⁾	✓	✓	✓	✓	✓	✓	✓	✓		✓	✓	✓	
Rendezvous	✓	✓	✓	✓	✓	✓	✓	✓		✓	✓	✓	
Internet Printing Protocol	✓	✓	✓	✓	✓	✓			✓				
Windows ⁽¹⁾	✓	✓	✓	✓	✓	✓	✓	✓	✓	✓	✓	✓	✓
MacOS ⁽²⁾	✓	✓	✓	✓	✓	✓	✓	✓		✓	✓	✓	
Netware ⁽³⁾	✓	✓	✓	✓	✓	✓	✓	✓	✓				
Unix/Linux	✓	✓	✓	✓	✓	✓	✓	✓	✓				
Warranty	3 years	3 years	3 years	3 years	3 years	3 years	3 years	3 years	3 years	1 year	1 year	1 year	1 year

MANAGEMENT

- › **Small networks:** Windows Installation Tool + Web management + Safe firmware upgrade + Automatic IP setting
- › **Large networks:** All above + AXIS ThinWizard multi-unit administration + SNMP v1 Management
- › **Enterprise:** All above + E-mail notification + SNMP v3 Secure Management + Manual/Automatic Network speed + HTTPS secure web management

SECURITY

- › **Basic:** Password protected administration
- › **Extensive:** All above + Netware Packet Signature + Secure admin HTTPS + SNMP v3 Secure Management + TCP Printing Restriction

Host-to-LAN Print Servers					
Product	AXIS 5570e TCP/IP	AXIS 5670e TCP/IP	AXIS 5570e IPDS SNA	AXIS 5670e IPDS SNA	AXIS 670e
Printer ports ⁽⁴⁾	1 Parallel 1 USB	2 Parallel 1 Serial	1 Parallel 1 USB	2 Parallel 1 Serial	2 Parallel 1 Serial
Network	10/100BaseT	10/100BaseT	10/100BaseT	10/100BaseT	TokenRing
Management	Enterprise	Enterprise	Enterprise	Enterprise	Large Networks
Firmware upgradable ⁽⁶⁾	✓	✓	✓	✓	✓
Security	Extensive	Extensive	Extensive	Extensive	Basic
Rendezvous	✓	✓	✓	✓	
Internet Printing Protocol	✓	✓	✓	✓	✓
Copier finishing options			✓	✓	✓
Windows ⁽¹⁾	✓	✓	✓	✓	✓
MacOS ⁽²⁾	✓	✓	✓	✓	
Netware ⁽³⁾	✓	✓	✓	✓	✓
Unix/Linux	✓	✓	✓	✓	✓
IBM protocols	TN3270E, TN5250E	TN3270E, TN5250E	TN3270E, TN5250E, SNA, PPR/PPD	TN3270E, TN5250E, SNA, PPR/PPD	TN3270E, TN5250E, SNA, PPR/PPD
IBM formats	SCS, 3270DS	SCS, 3270DS	SCS, 3270DS, IPDS	SCS, 3270DS, IPDS	SCS, 3270DS, IPDS
Warranty	3 years	3 years	3 years	3 years	3 years

- (1) Windows NT, WFW, 95, 98, Me, 2000, XP, 2003
- (2) Apple EtherTalk and TCP/IP based printing in MacOS X 10.x and MacOS 7,8,9
- (3) NetWare 3.12, 4.10, 4.2, 5.X, 6.X and above. Supports bindery and NDS mode. Supports user messages. NDPS supported over IP and IPX. Support for iPrint using both LPR and IPP protocols. Print Methods: NDPS, (IP/IPX), PSERVER (IP/IPX) RPRINTER/NPRINTER, iPrint (LPR/IPP)
- (4) USB is full speed (ver 1.1 compatible with ver 2.0)
- (5) English, French, German, Spanish, Italian and Japanese Japanese not supported in AXIS OfficeBasic USB Wireless
- (6) Future firmware upgrades are free



Network Document Servers

Instant digitized document distribution over IP networks

Axis Network Document Servers are the ideal solution for instant digitized document distribution over IP networks. Faster, cheaper and safer than fax, traditional mail and overnight courier, they give users the ability to turn paper documents into digital format. Documents can then be sent

anywhere across networks - instantly. You reduce the cost of paper, streamline and speed up distribution, and make every important document available to everyone who needs it, in a secure way, using one common platform - e-mail.

COMMON FEATURES

- ▶ Supporting scanner devices from leading manufacturers such as Canon, Epson, Fujitsu, HP, Panasonic and Ricoh
- ▶ Direct connection to Ethernet/Fast Ethernet networks; no PC needed; works on all TCP/IP platforms
- ▶ Communicates using existing Internet connection, not expensive phone lines
- ▶ Sends documents directly to the recipient's e-mail Inbox, without delay

BENEFITS

- ▶ Easier, faster and cheaper than traditional distribution methods
- ▶ Integrates easily with document management and archiving systems
- ▶ Cost-effective
- ▶ Supports better image quality than a fax and is not limited to black and white

AXIS 70U

The AXIS 70U Network Document Server is the easy solution for digitized document distribution over IP networks.



- ▶ Connects popular office scanners up to 15 ppm
- ▶ Supports standard paper formats (depending on scanner capabilities)
- ▶ Standard image formats such as PDF, TIFF, JPEG and PCL
- ▶ Sends documents to e-mail addresses, file servers, printers, URLs or the Web
- ▶ Easily integrates with applications using XML
- ▶ Sends delivery confirmations via e-mail

AXIS 7000

The AXIS 7000 Network Document Server is the ideal solution for versatile document management over IP networks.



- ▶ Connects and networks a broad range of office and production scanners
- ▶ Supports any paper format (up to A3/11x17")
- ▶ Standard image formats such as PDF, TIFF, JPEG and PCL
- ▶ Sends documents to e-mail addresses, file servers, printers, URLs or the Web
- ▶ Easily integrates with applications using XML
- ▶ Sends delivery confirmations via e-mail

TECHNICAL OVERVIEW

Model	Recommended usage		Connections		Supported devices						Functions and features	
	Document distribution and archiving	Integration with applications and databases	Scanner	Network: 10/100 Ethernet Connector: RJ45	Optional keyboard Mini-DIN	Office scanners	Profiles	Duplex	B/W grayscale color	Distribution methods	NT (2000) Authentication LDAP Address book XML support	
AXIS 70U	✓	✓	SCSI-2 USB 1.1, 2.0	✓	✓	✓	TIFF, JPEG, PCL, PDF	✓	✓	Send-to File/URL/Print, E-mail	✓	
AXIS 7000	✓	✓	✓	✓	✓	✓	✓	✓	✓	✓	✓	



Network CD/DVD Servers

Effectively store and share CD/DVDs across networks

Axis' market-leading Network CD/DVD Servers enable CDs, DVDs, CD-Rs and CD-RWs to be shared across networks. There is no need for multiple disc players. Axis' network CD/DVD servers can simply cache the discs to hard disk. The servers support all major networking protocols and operating systems, enabling multiple users operating in different environments to simultaneously access the same data across networks.

Axis' network CD/DVD servers are less costly and easier to manage than using file servers for networking CD/DVD collections. Any organization that relies heavily on CD/DVD-based information can benefit from an AXIS StorPoint CD+.

BENEFITS

- ▶ Simultaneous access and sharing of CD/DVDs over networks.
- ▶ Simple network archiving
- ▶ Total flexibility
- ▶ Cost-effective

COMMON FEATURES

The AXIS StorPoint CD+ servers are easily integrated into CD/DVD towers, without needing additional file servers or software.

- ▶ Store CD, DVD, CD-R and CD-RW and share them over networks
- ▶ Hard disk caching: Archive up to 255 CD/DVDs on hard disk
- ▶ CD-R/RW recording: Drag-and-drop files across networks
- ▶ Support for all major network protocols and operating systems (Windows 95/98/NT/2000/XP/2003, Netware 4.x/5.x/6.x, UNIX/Linux and MacOS)
- ▶ Direct attachment to Ethernet/Fast Ethernet networks
- ▶ Web interface for easy management



TECHNICAL OVERVIEW

Model	Connections		Format	N° of ports	N° of devices	RAM memory (max. expansion)	Hard disk caching capacity**	CD recording*	CD/DVD grouping
	Network	Connector							
AXIS StorPoint CD + IDE/T	10/100 Ethernet	RJ45	Tower module	4 ATA	8	32 MB (256 MB)	255 CDs	CD-R/RW	✓
AXIS StorPoint CD + Basic SCSI/T	10/100 Ethernet	RJ45	Tower module	1 x SCSI-2	7	32 MB (256 MB)			
AXIS StorPoint CD + Basic Dual SCSI/T	10/100 Ethernet	RJ45	Tower module	2 x SCSI-2	14	32 MB (256 MB)			
AXIS StorPoint CD + SCSI/T	10/100 Ethernet	RJ45	Tower module	1 x SCSI-2	7	32 MB (256 MB)	255 CDs	CD-R/RW	✓
AXIS StorPoint CD + Dual SCSI/T	10/100 Ethernet	RJ45	Tower module	2 x SCSI-2	14	32 MB (256 MB)	255 CDs	CD-R/RW	✓

* Windows and Netware environments only

** Capacity depends on installed hard disk

PRODUCT INDEX

> Network Cameras

› AXIS 205	5
› AXIS 206	5
› AXIS 206M Megapixel	5
› AXIS 206W Wireless	5
› AXIS 210	5
› AXIS 211	6
› AXIS 2100	5
› AXIS 2110	6
› AXIS 2120	6
› AXIS 213 PTZ	7
› AXIS 230 MPEG-2	6
› AXIS 231D	7
› AXIS 2420	6

> Video Servers

› AXIS 241Q	11
› AXIS 241S	11
› AXIS 2400+	11
› AXIS 2401+	11
› AXIS 2411	11
› AXIS 250S MPEG-2	11
› AXIS Rack Solution	13

> Network Video Decoders

› AXIS 292	13
------------	----

> Video Software

› AXIS Camera Explorer	14
› AXIS Camera Recorder	14
› AXIS Camera Station	14-15

> Accessories and Bundles

› AXIS 2191 Audio Module	15
› AXIS 2490 Serial Server	15

> Network Print Servers

› AXIS 540+	18
› AXIS 5400+	17
› AXIS 5500	17
› AXIS 5550	17
› AXIS 5570e	17
› AXIS 560	18
› AXIS 5600+	17
› AXIS 5670e	17
› AXIS 5800+	17
› AXIS 5810 Print Plug	18
› AXIS 5900	17
› AXIS 660	18
› AXIS 670e	17
› AXIS OfficeBasic Parallel	18
› AXIS OfficeBasic USB	18
› AXIS OfficeBasic USB Wireless	18

> Network Document Servers

› AXIS 70U	20
› AXIS 7000	20

> Network CD/DVD Servers

› AXIS StorPoint CD+	21
----------------------	----

SWEDEN

Head office, Lund
 Axis Communications AB
 Emdalavägen 14
 SE-223 69 Lund
 Tel: +46 46 272 18 00
 Fax: +46 46 13 61 30
 E-mail: info@axis.com

AUSTRALIA

Melbourne
 Axis Communications Pty Ltd
 Level 50, 120 Collins Street
 Melbourne 3000
 Australia
 Tel: +613 9225 5244
 E-mail: info-au@axis.com

GERMANY

Munich
 Axis Communications GmbH
 Lilienthalstr. 25
 DE-85399 Hallbergmoos
 Tel: +49 811 555 08 0
 Fax: +49 811 555 08 69
 E-mail: info-de@axis.com

Support:
 Tel: +49 1805 294 77 8

KOREA

Seoul
 Axis Communications Korea
 Co., Ltd.
 Rm 407, Life Combi B/D.
 61-4 Yooido-dong
 Yeongdeungpo-Ku
 Seoul
 Tel: +82 2 780 9636
 Fax: +82 2 780 2743
 E-mail: info-kr@axis.com

SPAIN

Madrid
 Axernet Communications S.A.
 Sector Oficinas 31, 1
 ES-28760 Tres Cantos
 Madrid
 Tel: +34 91 803 46 43
 Fax: +34 91 803 54 52
 E-mail: info-es@axis.com

Support:
 Tel: +34 91 803 46 43

UNITED STATES

Boston
 Axis Communications Inc.
 100 Apollo Drive
 Chelmsford, MA 01824
 Tel: +1 978 614 2000
 Fax: +1 978 614 2100
 E-mail: info-us@axis.com

Support:
 Tel: 800 444 2947

CONTACT INFORMATION

CHINA

Shanghai
 Axis Communications Ltd
 Rm. 001, 6/F, Novel Building
 887 Huai Hai Zhong Rd.
 Shanghai 200020
 Tel: +86 21 6431 1690
 Fax: +86 21 6433 8264
 E-mail: info-cn@axis.com

ITALY

Torino
 Axis Communications
 Via Roma 47
 10025 Pino Torinese
 Torino
 Tel/Fax: +39 011 841 321
 E-mail: info-it@axis.com

NETHERLANDS

Rotterdam
 Axis Communications BV
 Benelux
 Glashaven 38
 NL-3011 XJ Rotterdam
 Tel: +31 10 444 34 34
 Fax: +31 10 750 46 99
 E-mail: info-nl@axis.com

Support:
 Tel: +31 10 444 34 34

TAIWAN

Taipei
 Axis Communications Ltd
 8F-11, 101 Fushing North Road
 Taipei
 Tel: +886 2 2546 9668
 Fax: +886 2 2546 1911
 E-mail: info-tw@axis.com

San Diego
 9191 Towne Center Drive
 Suite #420
 San Diego, CA 92122
 Tel: +1 800 444 2947

Support:
 Tel: 800 444 2947

FRANCE

Paris
 Axis Communications S.A.
 7-9 avenue Aristide Briand
 94230 Cachan
 Tel: +33 1 49 69 15 50
 Fax: +33 1 49 69 15 59
 E-mail: info-fr@axis.com

Support:
 Tel: +33 1 49 69 15 50
 E-mail: support-fr@axis.com

JAPAN

Tokyo
 Axis Communications K.K.
 Shinagawa East One Tower 13F
 2-16-1 Konan
 Minato-ku Tokyo 108-0075
 Tel: +81 3 6716 7850
 Fax: +81 3 6716 7851
 E-mail: info@axiscom.co.jp

SINGAPORE

Axis Communications
 (S) Pte Ltd
 541 Orchard Road
 #18-03/04 Liat Towers
 Singapore 238881
 Tel: +65 6 836 2777
 Fax: +65 6 836 3106
 E-mail: info-sg@axis.com

UNITED KINGDOM

Hertfordshire
 Axis Communications (UK) Ltd.
 Suite 2, Ladygrove Court
 Hitchwood Lane
 Preston, Nr Hitchin
 Hertfordshire SG4 7SA
 Tel: +44 870 162 0047
 Fax: +44 870 777 8620
 E-mail: info-uk@axis.com

Support:
 Tel: +44 870 162 0048

About Axis

Axis increases the value of network solutions. The company is an innovative market leader in network video and print servers. Axis' products and solutions are focused on applications such as security surveillance, remote monitoring and document management. The products are based on in-house developed chip technology, which is also sold to third parties.

Axis was founded in 1984 and is listed on the Stockholmsbörsen (XSSE:AXIS). Axis operates globally with offices in 14 countries and in cooperation with distributors, system integrators and OEM partners in 70 countries. Markets outside Sweden account for more than 95% of sales. Information about Axis can be found at www.axis.com

www.axis.com